

COMMERCIAL

THE HIGHEST QUALITY BATHROOM SOLUTIONS FOR AUSTRALIAN HOMES & INDUSTRY

**CORE
RANGE**

JS.2017/2018

johnsonsuiss.com.au



WHEREVER YOU ARE

www.johnsonsuiss.com.au

Take advantage of our online product catalogue to find out about our product ranges, materials, sizes and finishes that enable you to plan and transform your bathroom space. Available 24 hours a day, 365 days a year.

Contact us today!

Dedicated sales and technical helpline: 1300 717 717

Email: bpa.commercial@johnsonsuiss.com.au

CONTENTS

ABOUT US

- 3 Johnson Suisse Introduction
- 4 FAQ
- 6 Features & Benefits

CORE PRODUCTS

8	Basins
20	Toilet Suites
34	Assist & Ambulant Accessories
36	Baths
42	Tapware
52	Showers
64	Furniture
68	Accessories
74	Hand Dryers

- 75 Index
- 78 Product Warranty
- 80 Other Brochures



INTRODUCTION





JohnsonSuisse

Bathroom Solutions

Johnson Suisse is a subsidiary of the Roca Group; the world's leading bathroom business, and is supported by a network of more than 80 factories in over 135 markets. Best known for our extensive expertise and vast range of high quality products, Johnson Suisse has become a well-known and trusted industry name. Innovation, functional design and high quality materials are at the heart of the Johnson Suisse brand and these values are maintained across the impressive portfolio of products available.

Keeping up to date with trends and consumer needs, Johnson Suisse offers ranges that will suit an array of projects, from the classic and conventional to the more modern and contemporary. Achieving a successful balance between functionality and visual excellence, Johnson Suisse aims to elevate the bathroom area into a space that is sophisticated and modern with notable features that offer convenience and comfort of the highest quality.

Johnson Suisse Bathrooms
Inspired designs for Australian life



Johnson Suisse's Australian story began more than 20 years ago with the introduction of a carefully curated range of selected basins and toilet suites into the local market. After a period of continued growth it now boasts one of the largest and most modern ceramic sanitary ware factories in the Asia Pacific region.

With extremely strong experience in the sector, Johnson Suisse specialises in vitreous china toilets and basins, accessories, tapware, showers, baths and vanity units, as well as a wide range of commercial and other bathroom products. The brand constantly strives to set high standards for itself and is committed to maintaining its position as an industry leader to take it to the next level of excellence.

With offices and distribution warehouses located in Sydney (HO), Brisbane, Melbourne, Perth and Dubbo, and sales offices in Adelaide and Hobart, Johnson Suisse services all Australian states.

Johnson Suisse services all segments of the Australian market from residential and commercial construction to DIY and home renovations through a wide network of specialty outlets including independent Plumbing and Bathroom Stores. The brand provides full installation advice, technical backup, spare parts and warranty support nationally.

Johnson Suisse is part of the Roca Group - the world's leading manufacturer of front-of-wall bathroom products. With over 21,000 staff and 80 production facilities globally, the Roca Group is able to provide a huge support network to ensure you can specify our products with confidence.

Johnson Suisse assures the highest levels of quality and design. The experience of Johnson Suisse in the commercialisation of products for the bathroom space for over 20 years ensures ongoing innovation, the best service and the best design in Australia.

Factories

We own and operate our factories

Quality

We control our materials and manufacturing quality

Design

We design our products to suit the Australian market

Supply

We manage our product supply chain



FAQ'S

What is AS1428?

AS1428 is the Australian Standard that relates directly the accessibility of the built environment by people with a disability. This Standard specifies the design requirements for new building work, as required by the Building Code of Australia (BCA) and the Disability (Access to Premises – Buildings) Standards (Premises Standards), to provide access for people with disabilities.

What is the difference between a regular WC and an accessible WC?

An accessible WC is larger so that a wheelchair user can easily transfer from a wheelchair to the pan, as the height of the pan with the seat is the same height as the wheelchair.

What is the difference between exposed and concealed grab rails?

Screws and fixings will be visible when exposed grab rails are fitted; concealed grab rails include covers which hide the fittings, offering a deluxe finish which is ideal for hotel specifications.

What does the term 'Ambulant Disabled' mean?

Ambulant disabled refers to people who suffer from a disability but are not necessarily reliant on using a wheelchair. Ambulant disabled people still require assistance within the bathroom space such as a raised pan or contrasting grab rails.

Where should wheelchair accessible toilets be located within a building?

There are several provisions of where a unisex wheelchair accessible washroom should be located within a building:

- As close as possible to the entrance/ waiting area of the building.
- Not in a way which would compromise the privacy of the user. Located in a similar position on each floor of a multi-storey building, and allow for right and left hand transfer on alternate floors.
- When it is the only toilet facility in the building, it must be a unisex wheelchair accessible washroom, and the width must be increased from 1.5m to 2m and should include a standard height washbasin in addition to the finger rinse basin. On an accessible route which is direct and obstruction free. Any wheelchair user should not have to travel more than 40m on the same floor or more than 40m on a combined horizontal distance where the unisex washroom is on another floor but is accessible via a passenger lift.

What are the colour contrast seat options?

Grey & Blue which are the best options for dementia users.

Is it Ambulant or Accessible?

610-600mm Pan Projection required for Ambulant

800mm +/- 10mm Pan Projection required for Disabled.

460-480mm Top of seat requirement for both Ambulant and Disabled bathrooms.

STATEMENT

All products comply with the relevant Australian Standards, have Watermark approval and carry the appropriate WELS certification. We are proud of the quality of all our products and as such provide warranties that extend the basic requirements of the Australian Competition and Consumer Act. Different product types have different warranty periods and conditions. Please see pages 10-11 for full details.

PRODUCT SPECIFICATION RESOURCES

Online: www.johnsonsuiss.com.au

Need More Information:

- Call 1300 717 717 to arrange for a local Johnson Suisse Representative to contact you.
- Ask for a copy of the comprehensive Johnson Suisse Technical Manual, featuring complete specification sheets for every product
- Also ask for a copy of the Recommended Retail Price Book to assist with project estimates
- All of the above information, including product photographs, installation guides, price book and Technical Sheets can be downloaded in PDF format from the Johnson Suisse website www.johnsonsuiss.com.au

FEATURES & BENEFITS

Johnson Suisse is constantly innovating in design and new technologies so that its products keep being a leading reference in the bathroom experience. Our product innovations allow you to reduce water consumption, providing savings in to the overall consumption of the building, contributing to a more efficient and sustainable environment.

VITREOUS CHINA



Dual flush cisterns

Watersaving double button to choose between a 4.5/3 l. flushing volume of water.



Compact toilets and Comfort height toilets



WC with reduced measure for reduced spaces or small bathrooms and to help people with reduced mobility.



Back-to-wall

Back to wall WC's and bidets are easy to clean and avoid dirt build up behind the toilet pan.



Compact basin

Washbasins with reduced measures for reduced spaces or small bathrooms.



For children

Adapted to children's measurements to make them easier to use.



Accessible

Adapted products to aid mobility and to assist people with disabilities and reduced mobility.



Anti-scratch surface

Surface has an anti-abrasive, anti-scratch feature

SEAT AND COVERS



Soft-close system

The WC lid with soft-close system avoids shocks and breakages.

FURNITURE



Push to open

Gently pressing the centre of the drawer or door facilitates the opening and closing process.



Soft-close (doors)

Thanks to this slow closing system, doors will close softly and slowly, for extended product durability.



Left opening

Left opening door.



Furniture unit that can be installed with legs

The set of optional legs is specially designed to install the unit on thin walls, so that it can be better secured.



Reduced depth unit

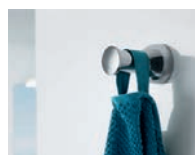
The solutions with reduced depth are ideal for making the most of small areas.



Height-adjustable shelves

The internal shelves may be placed at different heights, so that there are no space limitations.

ACCESSORIES



Mounting

Includes everything you need to install with either screws or adhesive.



Durable chrome finish

Guarantees a long-lasting chrome plating which can be easily cleaned.

It is possible to obtain water consumption reductions up to 60% in faucets, through single-lever, electronic control and self-closing options. Other ways to reduce the environmental footprint is to use high speed energy efficient hand-dryers which use up to 80% less energy than conventional dryers.

KEY

- Product Characteristic
- Product Benefit
- Sustainability Benefit

ACCESSORIES**Easy Clean**

Products feature an easy to clean finish.

**Accessible products**

A product specially designed for people with reduced mobility.

**Anti-vandal system**

Hidden fixations which require a tool to remove provide an anti-theft protection.

SHOWERS & BATHS**Rain**

The fine water droplets are converted into tiny threads, giving the body a sensation of lightness and pleasure.

**Anti-slip trays**

Treated product to avoid slipping while in use.

**Easy Clean handshower**

Anti-limescale system for handshowers for fuss-free elimination of limescale deposits, through the use of soft materials in the jets.

TAPWARE**1.1 - 4.5 - 6L/min**

Faucets featuring water-saving design with flow ranges between 1.1 - 6.0L/min'

**Electronic basin mixer**

Cutting-edge technology for electronic faucets, providing reliability, durability and water and energy saving. Specially recommended for public spaces.

**Accessible products**

A product specially designed for people with reduced mobility.

HAND DRYERS**7 year warranty**

Peace of mind and reassurance with 7 years warranty against manufacturing defects.

**Energy efficient**

High performance and efficiency combined. Consumes up to 85% less energy than other conventional hand dryers.

**Anti-bacteria microban**

Microban® antimicrobial product protection built into the dryer at the point of manufacture to provide continuous protection from microbes.

**Ultra-fast drying**

High speed motors for ultra fast drying by dragging away the moisture in hands. Drying time: 6 - 12 seconds

**Non-splash**

Non splash drying system with built-in water tank

MEDICAL**Medical hygiene**

These products are suitable for use in the medical industry and comply to relevant Australasian Health Facility Guidelines.



LUCCA SHELF BASIN

A timeless design, where both style and budget are important, the Lucca Wall-Hung Basin provides an affordable solution that will really impress in any corporate office or public restroom.

The Lucca Wall-Hung Basin is both modern and stylish and is available with either a right or left side integrated shelf. A bold look on it's own but to create a really unique bathroom design why not place a right hand and left hand basin side by side?

Also available with shroud or bottle trap for assisted living applications - compliant with AS1428.1.

WALL HUNG
J3170L | J3170R

SIZE: 750 mm x 470 mm

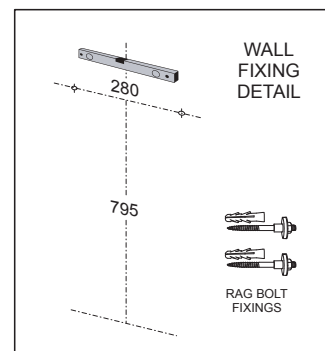
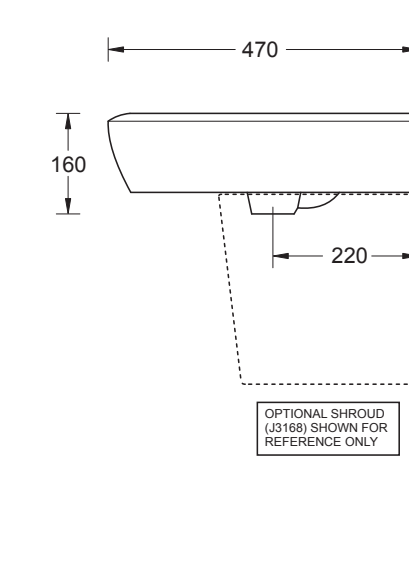
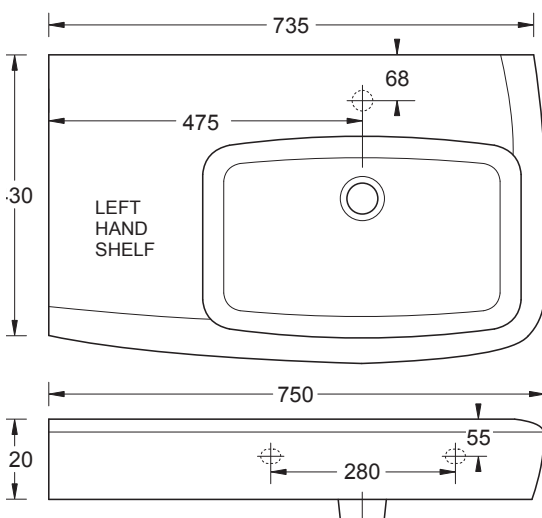
Large wall basin with
wide soap platform area

Shelf on left or right side

Capacity 6.6L

0/1 Taphole





BASINS

QUADO 450 BASIN

WALL HUNG
J3160

SIZE: 450 mm x 390 mm
Contemporary rectangular basin
Suitable for commercial and domestic applications
Capacity 4.0L
1 Taphole



QUADO 550 BASIN

WALL HUNG
J3162

SIZE: 550 mm x 445 mm
Mid-sized rectangular basin
Matching pedestal and shroud available
Capacity 6.6L
1 Taphole



QUADO 600 BASIN

WALL HUNG
J3164

SIZE: 600 mm x 445 mm
Large-sized basin with useful wide soap shelf
Matching pedestal and shroud available
Capacity 7.1L
1 Taphole



QUADO 800 BASIN

WALL HUNG
J3166

SIZE: 795 mm x 445 mm
Extra large-sized rectangular basin with side platform areas
Matching pedestal and shroud available
Capacity 7.1L
1 Taphole

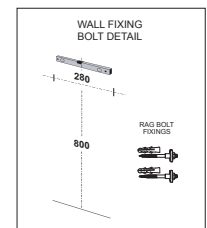
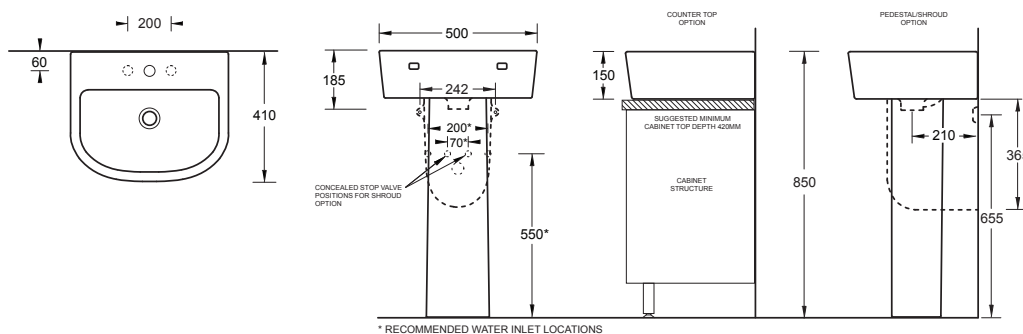
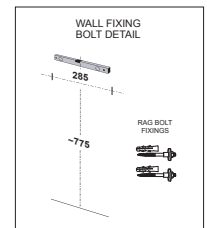
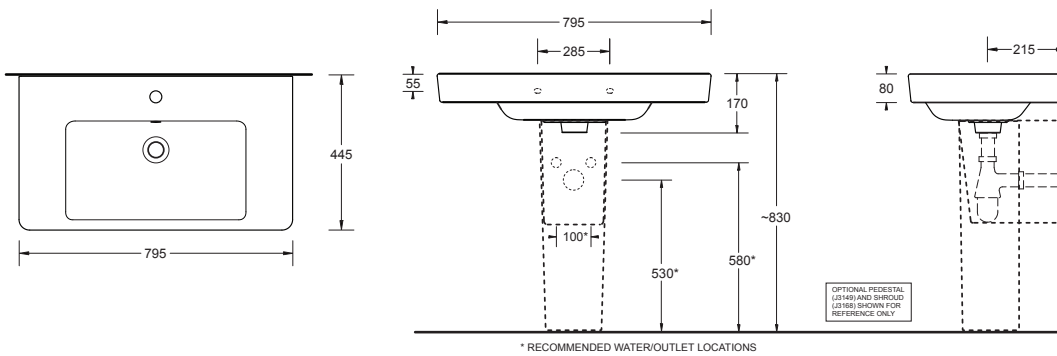
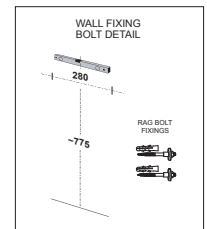
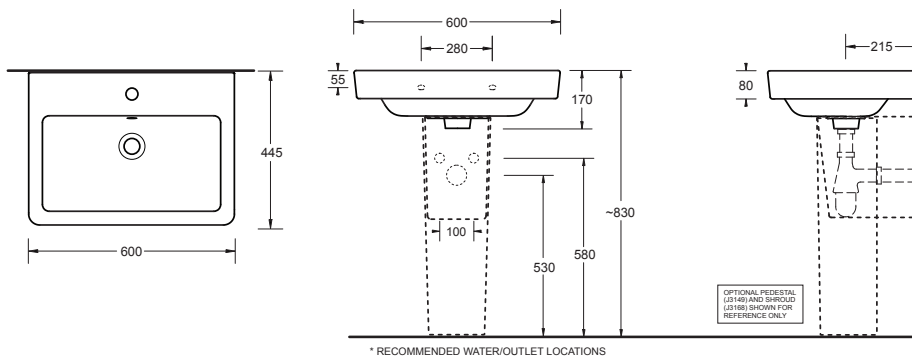
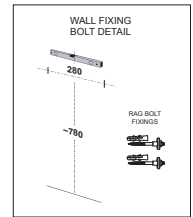
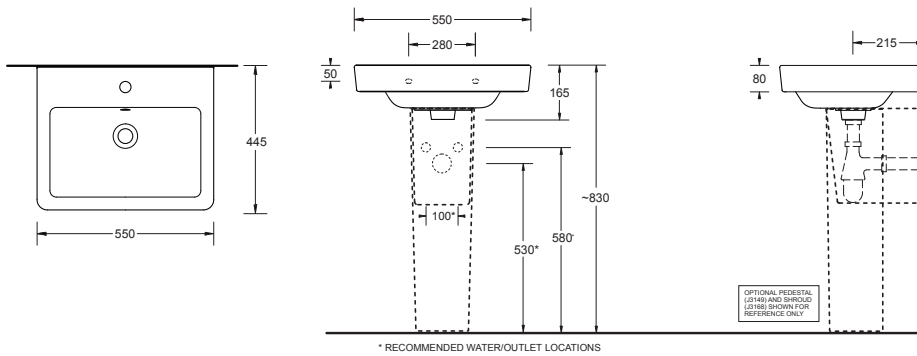
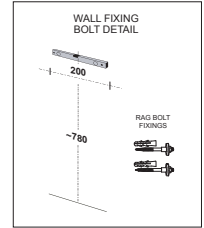
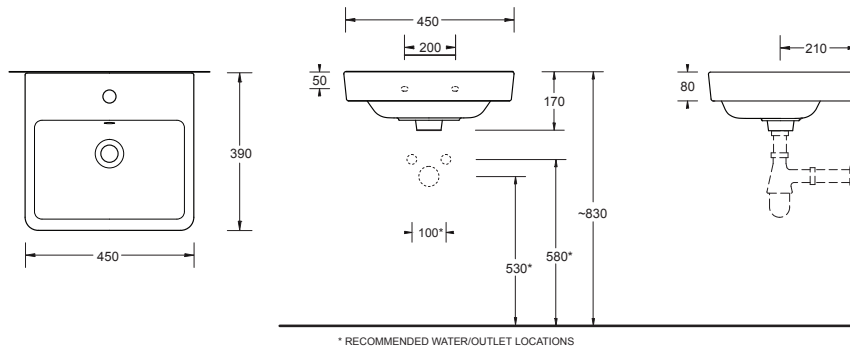


LIFE BASIN

WALL HUNG
J3070

SIZE: 500 mm x 410 mm
Attractive contemporary style basin
Generous bowl size and handy soap shelf
Capacity 6.5L
1 Taphole





BASINS

EMILIA 450 BASIN

WALL HUNG
J3140

SIZE: 455 mm x 350 mm
Small to mid size contemporary
standard basin
Wide soap platform area
Capacity 3.5L
1 Taphole



EMILIA 550 BASIN

WALL HUNG
J3142

SIZE: 560 mm x 450 mm
Contemporary standard basin
Matching pedestal and shroud
available
Capacity 7.2L
1 Taphole



EMILIA 600 BASIN

WALL HUNG
J3144

SIZE: 600 mm x 450 mm
Large wall basin with wide
soap platform area
Matching pedestal and shroud
available
Capacity 7.4L
1 Taphole



LIVING ASSIST BASIN

WALL HUNG
C0154

SIZE: 500 mm x 450 mm
Contemporary mid-size
wall-hung basin
Matching pedestal and
shroud available
Capacity 5.2L
1 Taphole



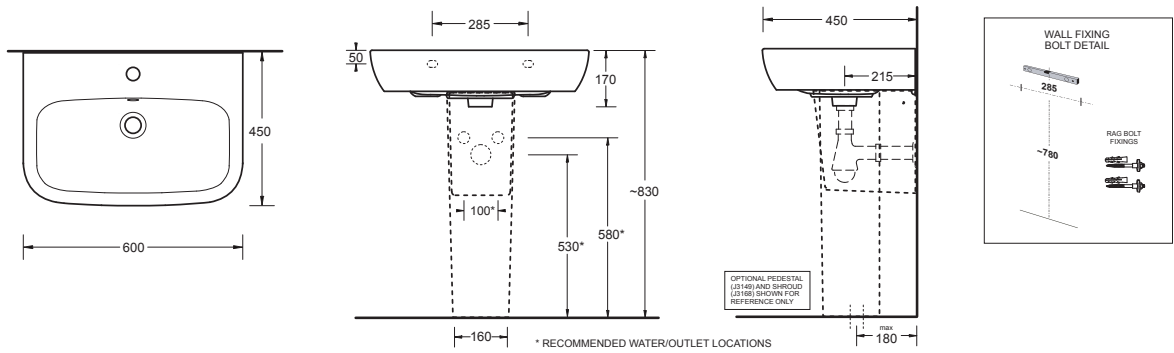
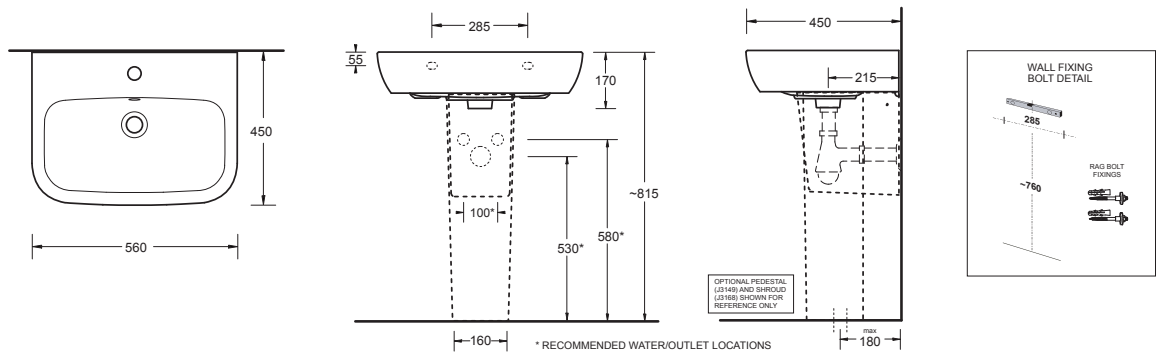
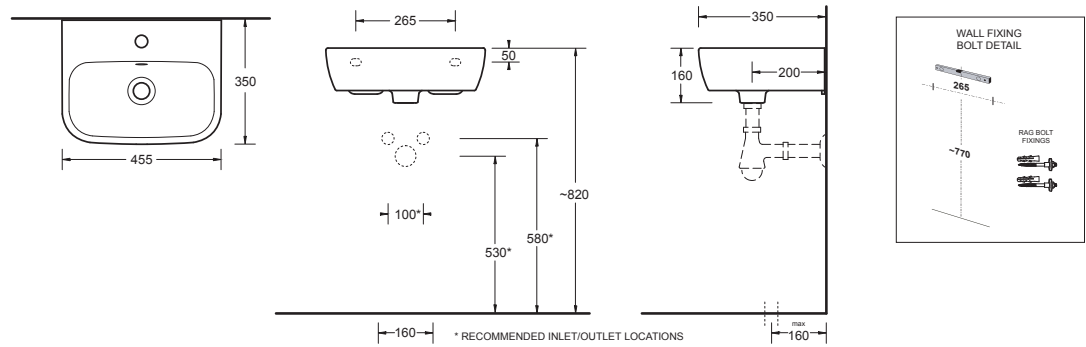
COMO BASIN

WALL HUNG
J3180

SIZE: 525 mm x 425 mm
Attractive mid-size
standard basin style
Wide soap platform area
Matching shroud available
Capacity 6.5L
1 Taphole

By  marbletrend





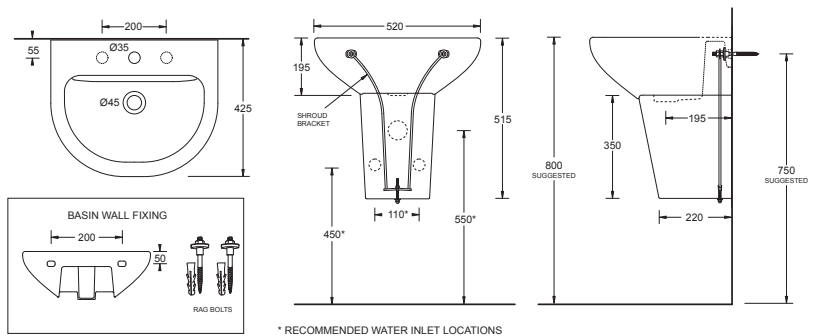
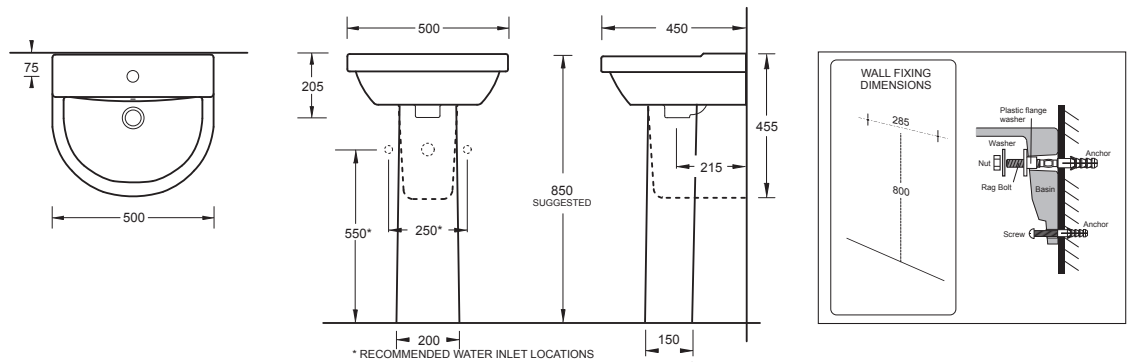
Optional Extra Items



SHROUD C4241



BOTTLE TRAP BT1



CLASSICA COMPACT BASIN

WALL HUNG
J3150

SIZE: 405 mm x 255 mm
Compact hand rinse basin.
Suits single mixer style tap
Suitable in installations where
space is limited
Capacity 2.2L
1 Taphole RH



EGG JUNIOR BASIN

WALL HUNG
C01427

SIZE: 510 mm x 355 mm
Small to mid size contemporary
standard basin
Can also be counter top mounted
Raised sides to reduce water spillage
Capacity 3.5L
1 Taphole



QUADO II BASIN

SEMI-RECESSED
J3110

SIZE: 480 mm x 480 mm
Rectangular form contemporary
semi-recessed basin. Mid-sized
with generous bowl size
Useful flat soap platform area
Capacity 4.5L
1 Taphole



LIFE BASIN

SEMI-RECESSED
J3065

SIZE: 525 mm x 470 mm
Rectangular form contemporary
semi-recessed basin. Mid-sized
with generous bowl size
Useful flat soap platform area
Capacity 6.4L
1 Taphole

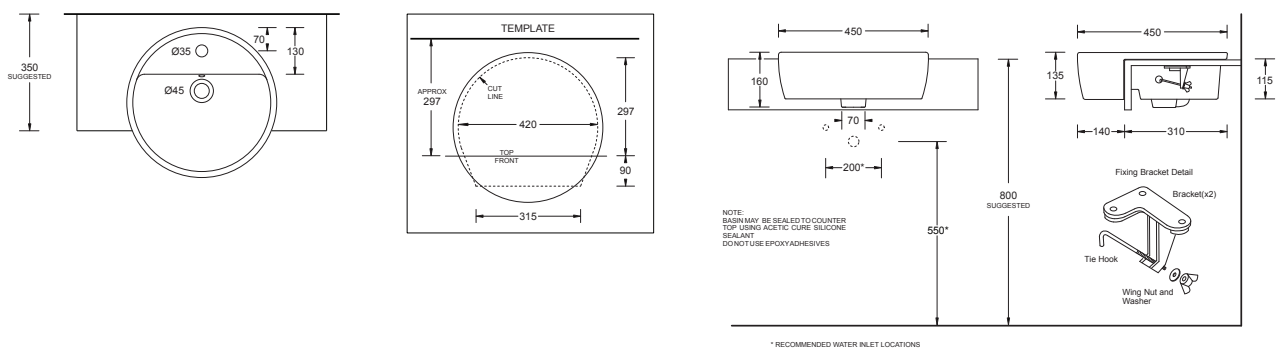
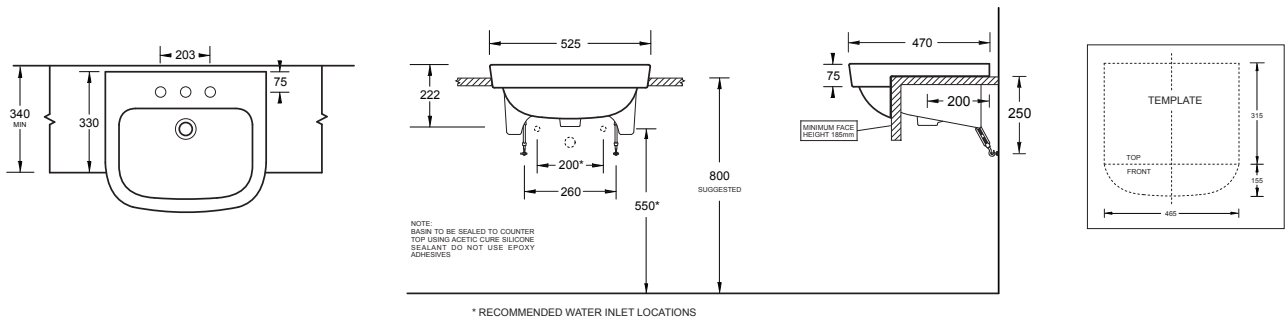
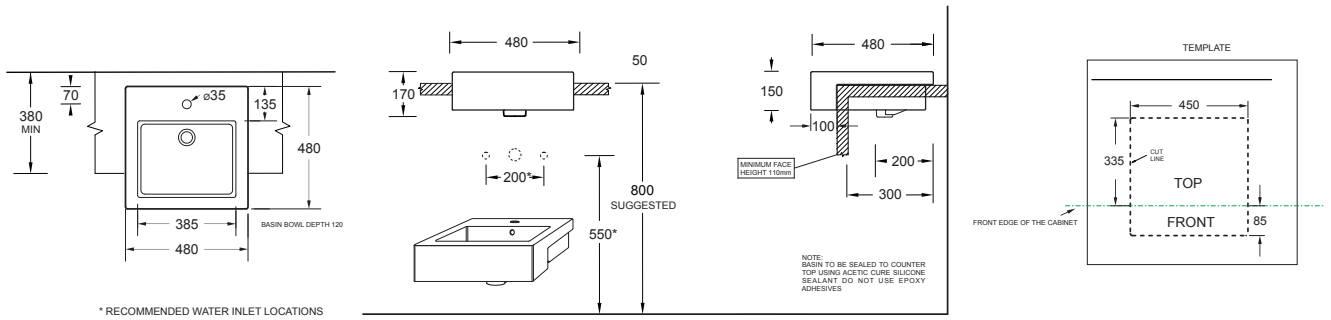
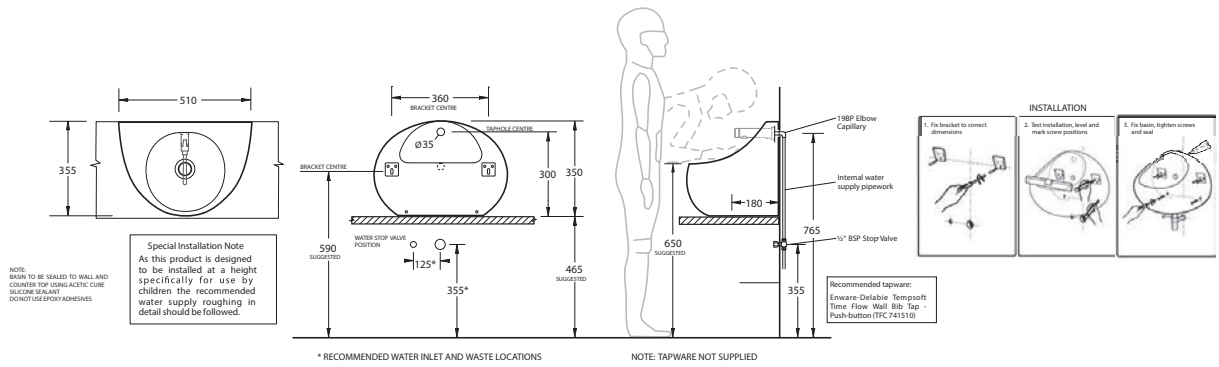
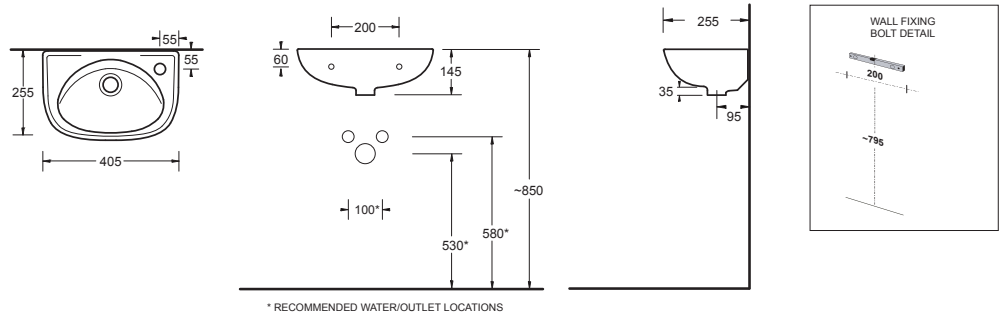


BASEL BASIN

SEMI-RECESSED
J3220


SIZE: 450 mm x 450 mm
Contemporary vessel-style
round semi-recessed basin.
Suitable for domestic or
commercial applications
Convenient soap platform area
Capacity 2.7L
1 Taphole





AVON BASIN


SEMI-RECESSED
J3010

SIZE: 495 mm x 420 mm
Traditional Oval form
semi-recessed basin
Mid-sized with generous
bowl size
Suitable for commercial and
domestic applications
Capacity 4.L
By  marbletrend



MILANO BASIN

SEMI-RECESSED
J3030

SIZE: 520 mm x 430 mm
Standard D-shaped form
semi-recessed basin
Mid-sized with generous
bowl size
Suitable for commercial and
domestic applications
Capacity 4.8L
By  marbletrend



LIFE BASIN

COUNTER TOP
INSET VANITY
J3040

SIZE: 520 mm x 450 mm
Well proportioned counter top
inset vanity basin
Mid-sized with generous
soap platform
Capacity 4.5L
1 Taphole



AVON BASIN


COUNTER TOP
INSET VANITY
J3001

SIZE: 500 mm x 430 mm
Traditional oval counter top
inset vanity basin
Mid-sized with twin soap
recesses
Capacity 4.0L
By  marbletrend

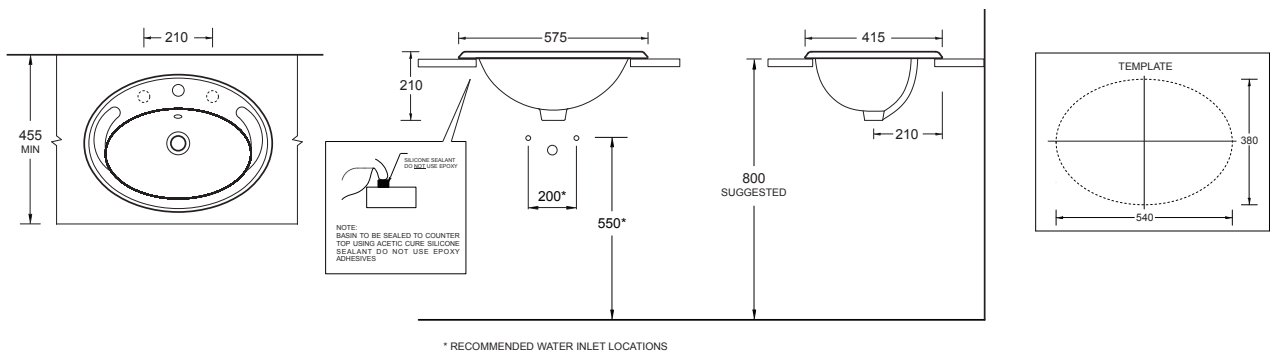
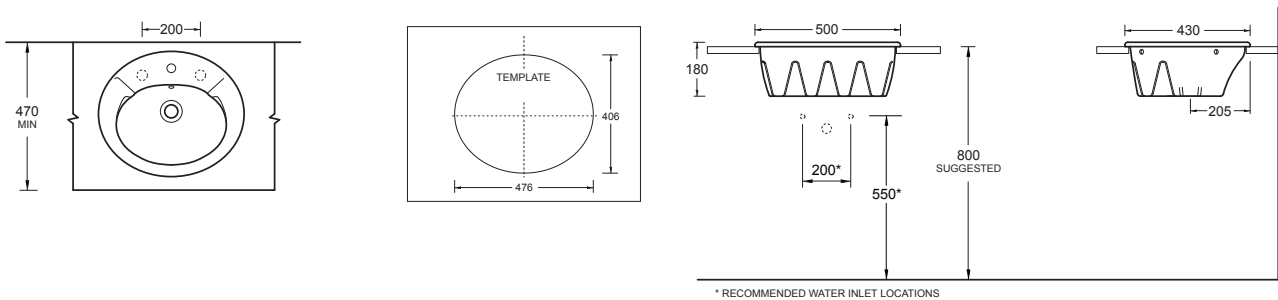
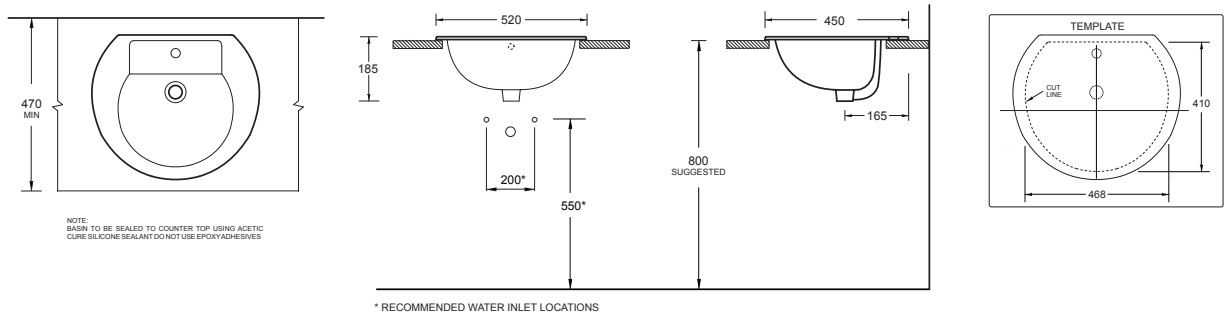
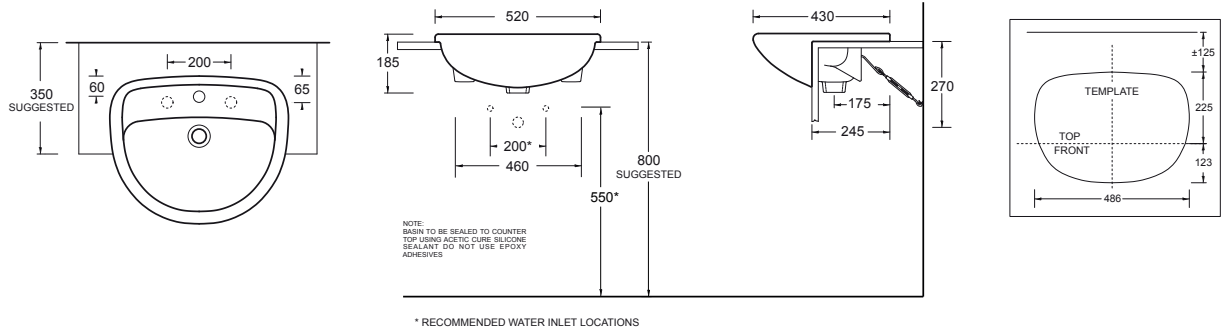
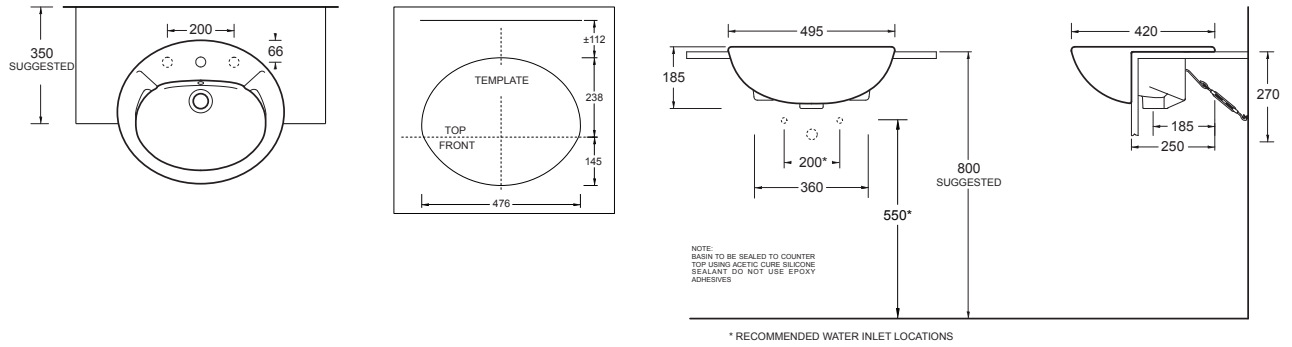


MILANO OVAL BASIN

COUNTER TOP
INSET VANITY BASIN
J3020

SIZE: 575 mm x 415 mm
Traditional oval counter top
inset vanity basin
Twin soap recesses
Capacity 4.0L
By  marbletrend





BASINS

QUADO BASIN

UNDER COUNTER
J3120

SIZE: 477 mm x 370 mm
Rectangular under counter
vanity basin
Suitable for commercial and
domestic applications
Capacity 7.5L
0 Taphole



SMALL SINK

COUNTER TOP
DROP IN SINK
C5201

SIZE: 520 mm x 420 mm
Durable glaze finish
Nominal bowl capacity 23L
Rectangular, drop-in vitreous
china laboratory sink



LARGE SINK

COUNTER TOP
DROP IN SINK
C5241

SIZE: 620 mm x 480 mm
Durable glaze finish
Large rectangular, drop-in
vitreous china laboratory sink
Nominal bowl capacity 29L

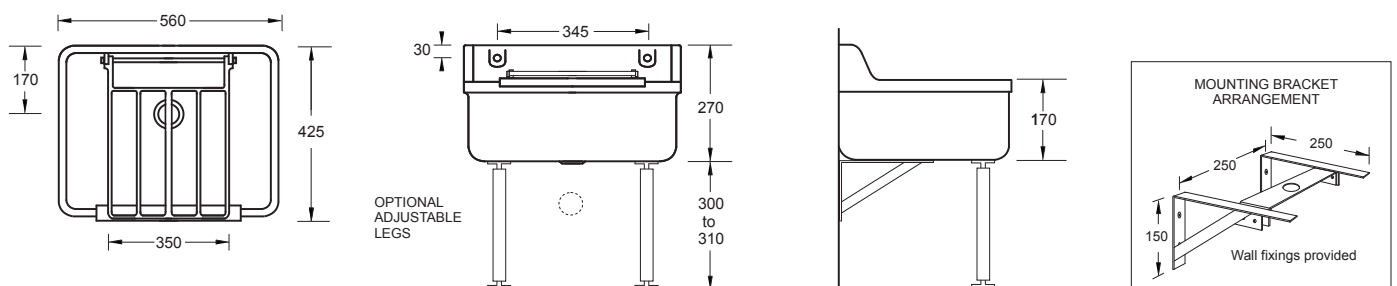
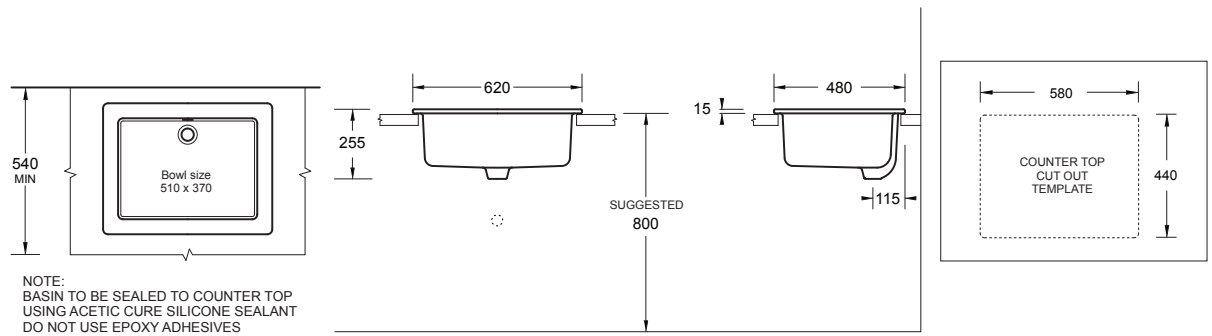
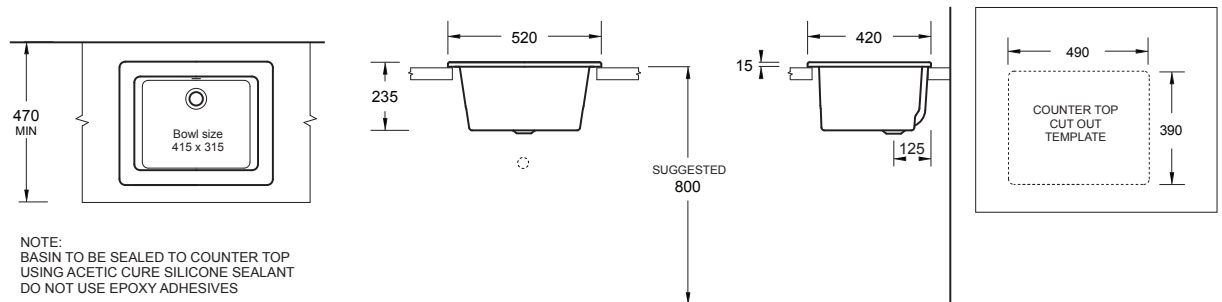
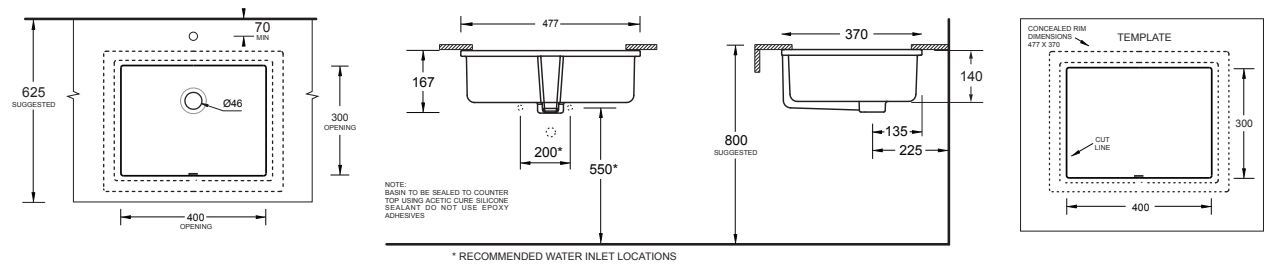


CLEANERS SINK BASIN

WALL HUNG
G1500

SIZE: 560 mm x 425 mm
Rectangular, wall mounted
vitreous china cleaners sink
Durable glaze finish
Bucket support grate
with buffer
50mm waste supplied
Nominal bowl capacity 24L







EGG JUNIOR

With its low to the ground design and optional choice of 4 colourful cistern lids, the fun Egg Junior Suite is the ideal choice when looking to customize childcare centre bathrooms or even your own kids bathroom! The bowl is finished in "Hygiene Glaze" for easy cleaning. This is a patented Nanotechnology process that creates a super-fine smooth bowl surface to prevent the accumulation of bacteria. It is suitable for either P or S trap installations. WELS 4 Star, 4. 5/3L.

TOILET SUITE
C67977.C6262

SIZE: 730 mm x 665 mm

Fun egg-shaped suite for children

Coloured cistern lids available

Easy-clean HYGIENE® glaze

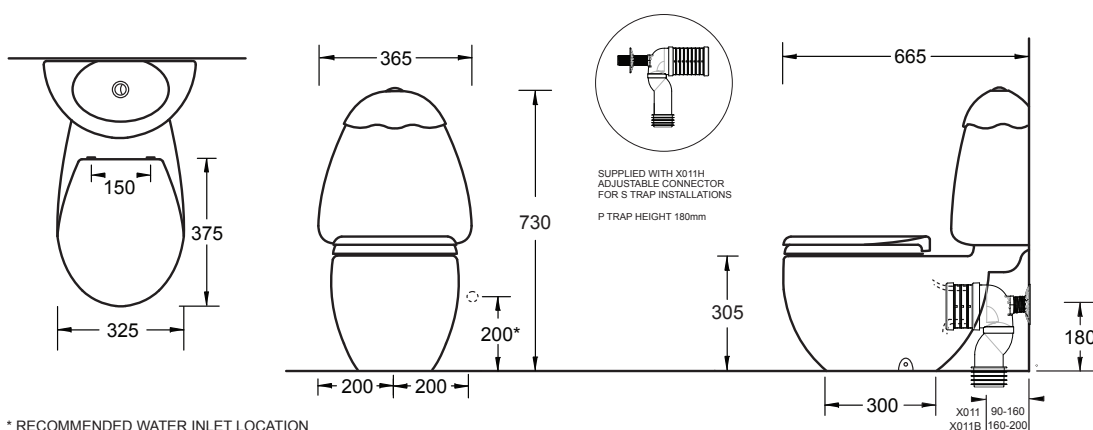
Flexible set out range
90-160mm(X011H)

Wels 4 Star



Commercial





* RECOMMENDED WATER INLET LOCATION

Standard Fittings	
Inlet Valve	XJ100
Outlet Valve	XJ114
Button	XJ147
Cistern Collar	XC9374
Cistern Bolts	XC9375

TETRAGON WALL HUNG SUITE TOILET SUITE

WALL HUNG
C1987.J2986
(MECH. FRONT PUSH)

C1987.J2987
(MECH. TOP PUSH)

SIZE: D550 x H400
Contemporary style wall-hung pan matched with a concealed in-wall cistern
Space efficient installation
Soft close seat
Selection of buttons available, page 26-27
Wels 4 Star



HEART ECONOFLUSH AIR TOILET SUITE

WALL FACED
J2570.J2981
(MECH. FRONT PUSH)

J2570.J2982 (PNEUMATIC)

J2570.J2988
(MECH. TOP PUSH)

SIZE: D570 x H400
Contemporary styled wall-faced pan matched with an in-wall cistern
Soft close/quick release seat
Selection of cistern actuator buttons available
WELS 4 Star



LIFE ECONOFLUSH AIR TOILET SUITE

WALL FACED
J2765.J2981
(MECH. FRONT PUSH)

J2765.J2982 (PNEUMATIC)

J2765.J2988
(MECH. TOP PUSH)

SIZE: D570 x H400
Contemporary styled wall-faced pan matched with an in-wall cistern
Soft close/quick release seat
Choice of button styles available (see page 26)
WELS 4 Star



BUTTON SELECTION FOR CONCEALED CISTERNS

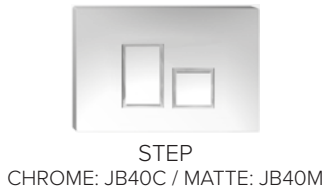
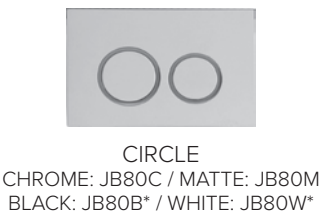
MECHANICAL FRONT PUSH BUTTONS

SIZE: 245mm x 165mm

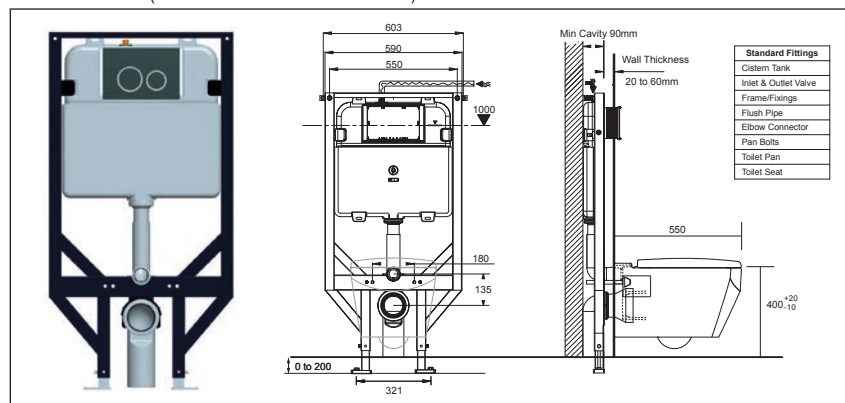
Our full range of Mechanical Push Buttons to be used in conjunction with Econoflush In-Wall cisterns (J2981 & J2986).

NOTE:

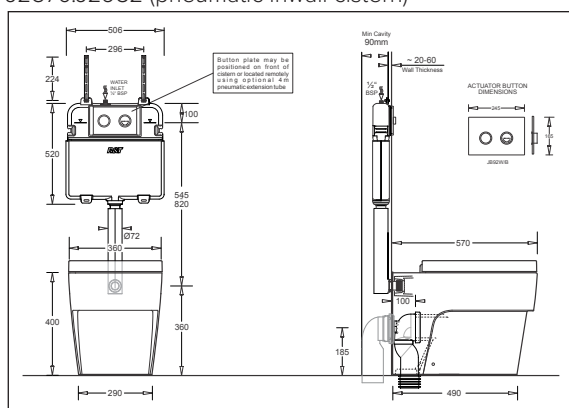
Black or White mechanical buttons are special order items, and may take up to 16 weeks to supply from order date dependant on required quantities.



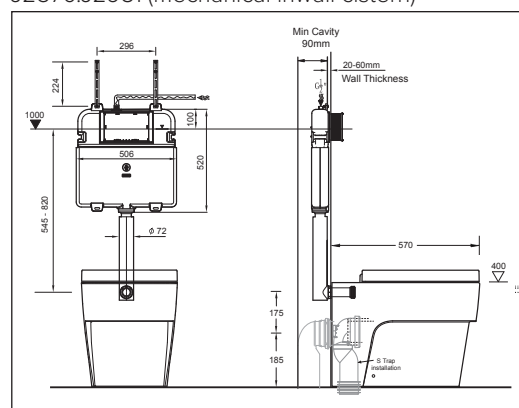
C1987.J2986 (mechanical inwall cistern)



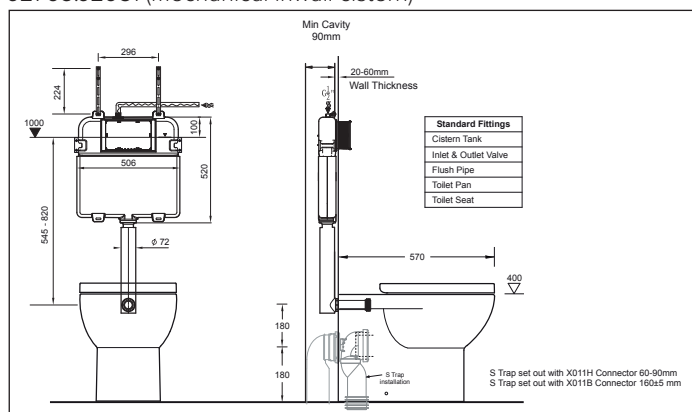
J2570.J2982 (pneumatic inwall cistern)



J2570.J2981 (mechanical inwall cistern)



J2765.J2981 (mechanical inwall cistern)



PNEUMATIC BUTTONS

SIZE: 210mm x 140mm

Buttons can be located up to 2 metres from toilet suite for pneumatic activation. To be used with Econoflush Air In-Wall cisterns (J2982).



RAISED BLUE
JB90B
DISABLED COMPLIANT



RAISED CHROME
JB90C
DISABLED COMPLIANT



WHITE
JB92W



BLACK
JB92BLK

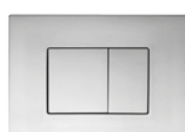
MECHANICAL TOP PUSH BUTTONS

SIZE: 210mm x 140mm

Our full range of Top Push Push Buttons to be used in conjunction with Econoflush In-Cabinet cisterns (J2988 & J2987).



OVAL
CHROME: JB01C
MATTE: JB01M



RECTANGLE
CHROME: JB05C
MATTE: JB05M



ANGLE
CHROME: JB10C
MATTE: JB10M

TOILET SUITES

TETRAGON FTW SUITE TOILET SUITE

FLUSH TO WALL
C67187.C6271

SIZE: D685 x H810
Contemporary angular faceted design style
Water inlet adjustable for concealed back entry
or left/right hand bottom entry
Features HYGIENE" glaze for easy cleaning
Adjustable S connector supplied
for 90-200mm set out
Wels 4 Star



VENEZIA FTW SUITE TOILET SUITE

FLUSH TO WALL
J2300.J2350

SIZE: D781 x H650
Smart modern upright styling
Soft close seat
Flexible set out range - 90-160cm (X011H)
Back-bottom water inlet
Wels 4 Star



HEART TOILET SUITE

FLUSH TO WALL
J2580.J2585

SIZE: D820 x H700
Simple easy-clean lines
Soft close seat
Flexible set out range - 90-200mm(X011H)
Back-bottom water inlet
Wels 4 Star

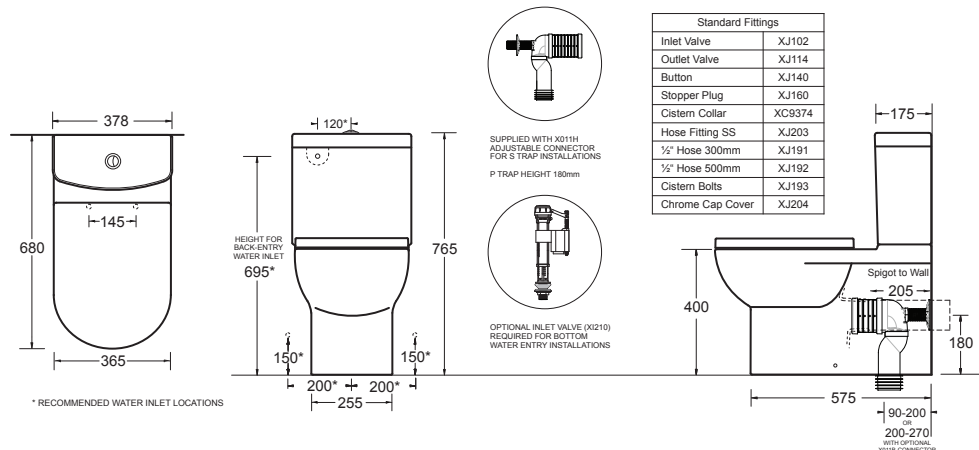
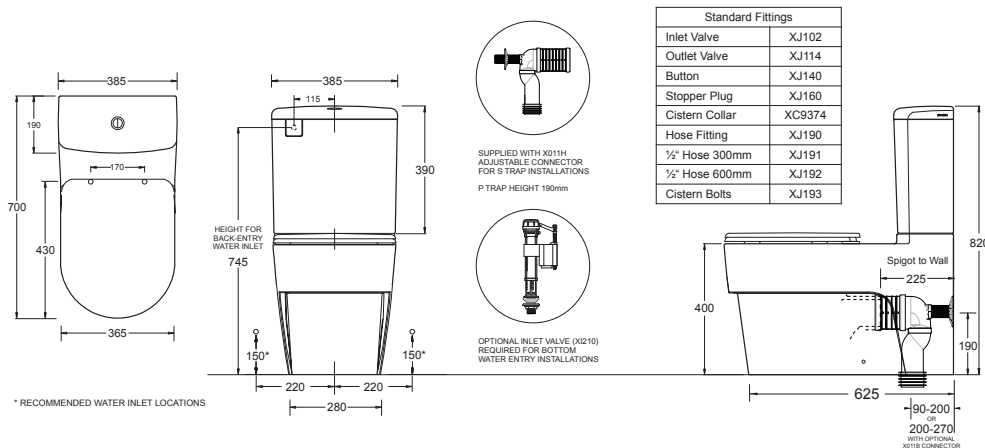
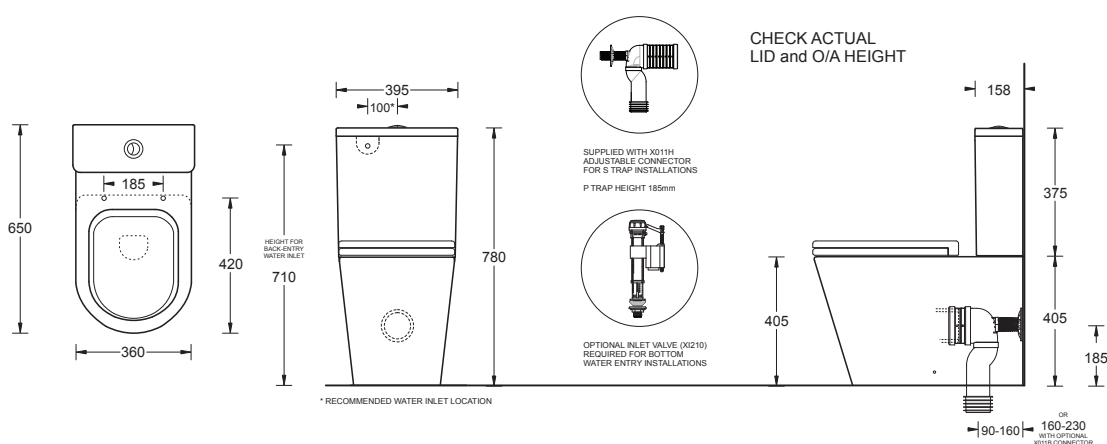
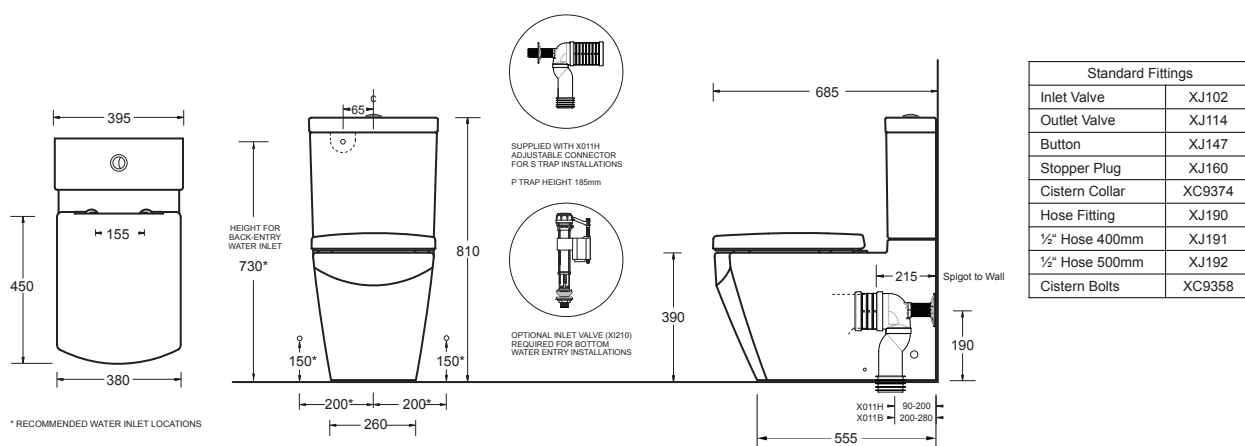


LIFE TOILET SUITE

FLUSH TO WALL
J2700.J2750

SIZE: D765 x H680
Smart, modern styling
Soft close seat
Flexible set out range - 90-200mm(X011H)
Back-bottom water inlet
Wels 4 Star





TOILET SUITES

SPACE SOLUTION CC TOILET SUITE

CLOSE COUPLED
C6799.C6269 (S/P TRAP)
C6799.C6269SK (SKEW TRAP)

Contemporary design style
Easy-clean HYGIENE© glaze
Elegant, compact suite
Flexible set out range - 90-200mm(X011H)
Soft close seat
Wels 4 Star



MILANO TOILET SUITE

FLUSH TO WALL
J1426

SIZE: D800 x H680
Contemporary design with easy to clean lines
Soft close seat
Flexible set out range - 90-180mm (X011H)
Wels 4 Star
By marbletrend



MILANO CC TOILET SUITE

CLOSE COUPLED
J1424 (S TRAP)
J1425 (P TRAP)

SIZE: D785 x H660
Modern design with compact lines
Soft close seat
Secure, external cistern fixing
P Trap available - J1425
Wels 4 Star
By marbletrend

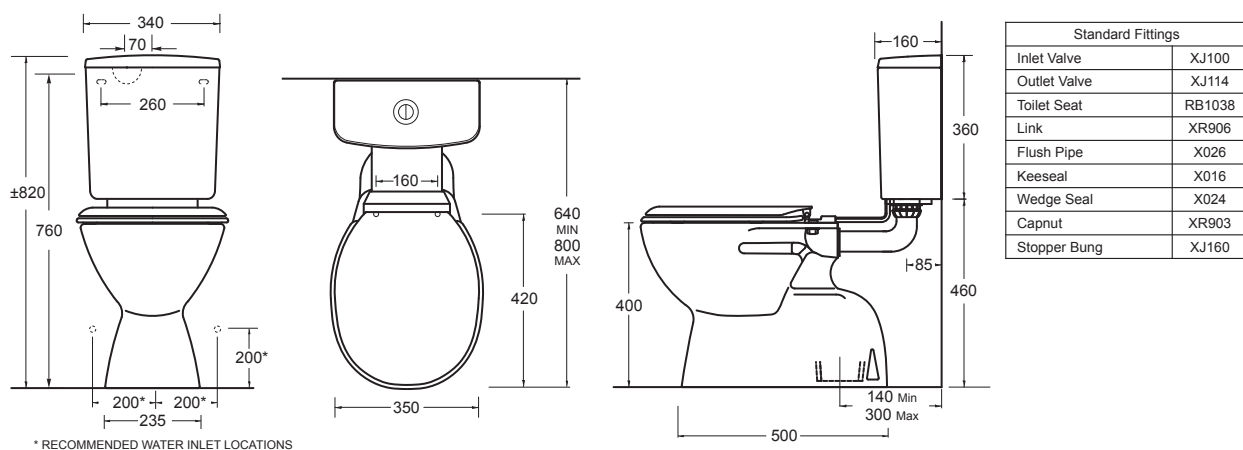
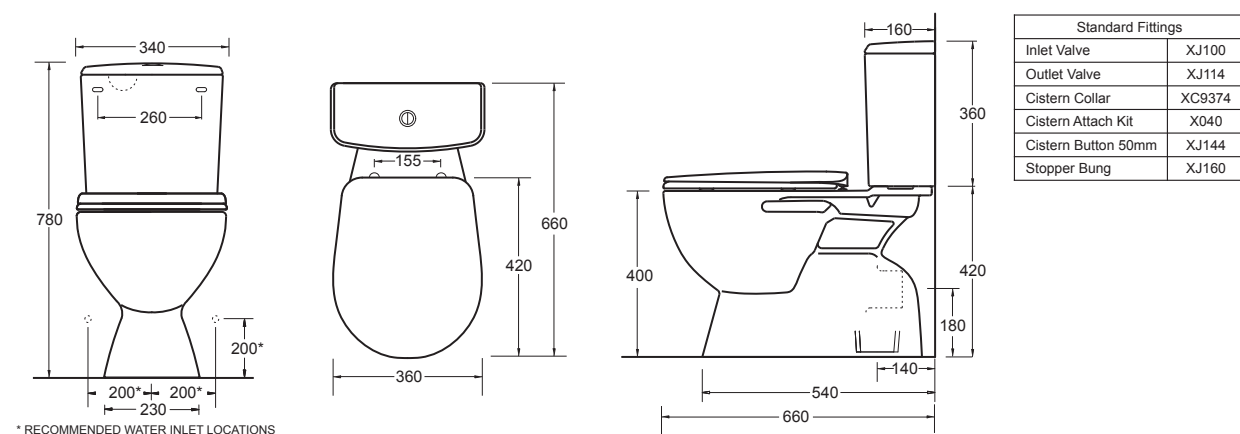
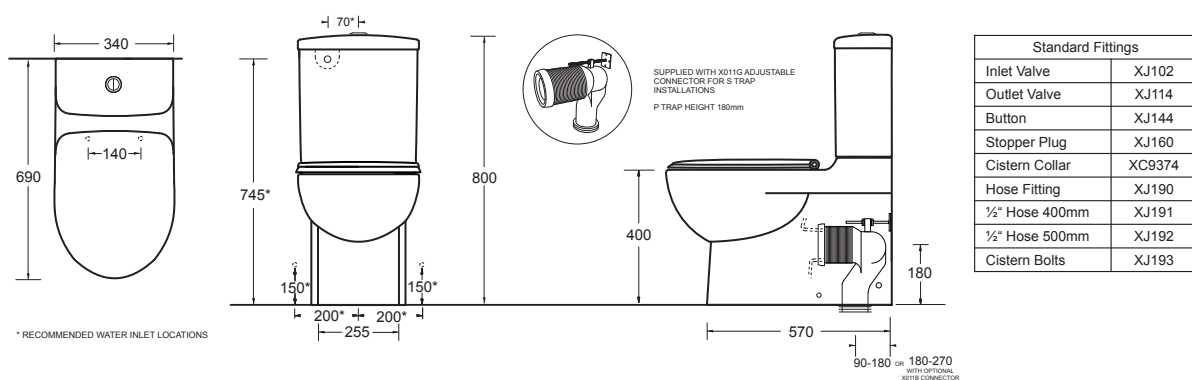
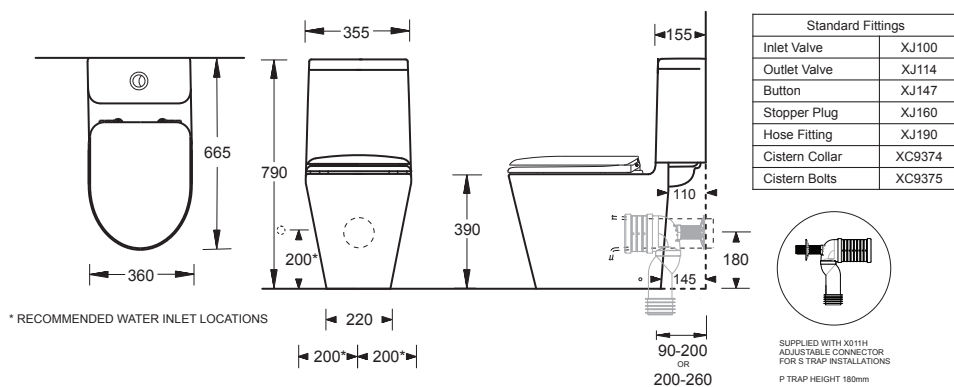


MILANO DELUXE TOILET SUITE

LINKED TOILET
J1423

SIZE: D820 x H640-800
Functional stylish design
Concealed outlet pan matched with vitreous china cistern
Standard close seat with fitted plastic link
Flexible S Trap set out range - 140-300mm
Wels 4 Star
By marbletrend





LIFE ASSIST WF ECONOFLUSH AIR (PNEUMATIC BUTTON) TOILET SUITE

WALL FACED

J2775.J2982.G (grey seat)
J2775.J2982.B (blue seat)
J2775.J2982.W (white seat)

SIZE: D800 x H470

Raised height pan with extended projection for wheelchair users

Available with Grey or Blue seats to assist users with dementia or visual impairments

Seat features top fix anti-vandal stainless steel fixings

Suitable for either back/bottom water entry or S/P Trap set out

WELS 4 Star

Choice of either White/Blue (JB90B) or Chrome (JB90C) raised buttons available



LIFE ASSIST FTW TOILET SUITE

FLUSH TO WALL

J2700SN.J2750SNG (grey seat/chrome button)
J2700SN.J2750SNB (blue seat/blue button)
J2700SN.J2750SNW (white seat/chrome button)

SIZE: D800 x H470

Raised height pan with extended projection for wheelchair users

Includes raised buttons, and is available with Grey or Blue seats to assist users with dementia or visual impairments

Seat features top fix anti-vandal stainless steel fixings

Suitable for either back/bottom water entry or S/P Trap set out

WELS 4 Star



PLAZA ASSIST DELUXE VC TOILET SUITE INC. BACK REST

LINK TOILET SUITES

J2031.J2201SNG.BR (grey seat/chrome button)
J2031.J2201SNB.BR (blue seat/blue button)
J2031.J2201SNW.BR (white seat/chrome button)

Extra height link suite with vitreous china cistern

Attractive stainless steel flush pipe for industrial durability

Available with Grey or Blue seats to assist users with dementia or visual impairments

Seat features top fix anti-vandal stainless steel fixings

Suitable for either back/bottom water entry
Wels 4 Star

> Shown with blue seat and flush button.



SELECT ASSIST DELUXE PLASTIC TOILET SUITE INC. BACK REST

LINK TOILET SUITES

J2031.RG21016SNG.BR (grey seat/chrome button)
J2031.RG21016SNB.BR (blue seat/blue button)
J2031.RG21016SNW.BR (white seat/chrome button)

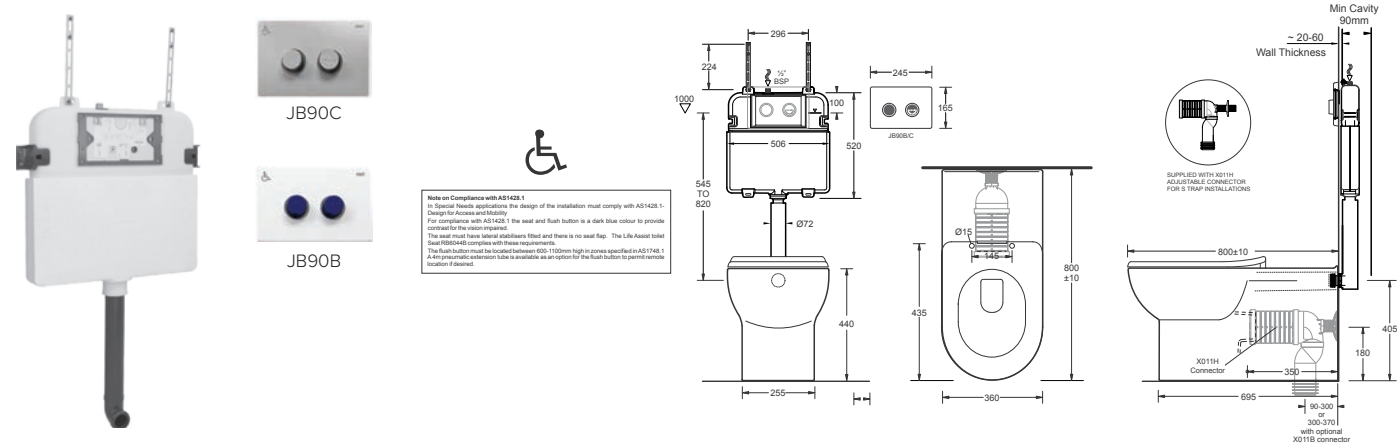
Extra height link suite with plastic cistern

Available with Grey or Blue seats to assist users with dementia or visual impairments

Seat features top fix anti-vandal stainless steel fixings

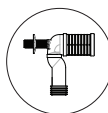
Suitable for either L/R bottom water entry
Wels 4 Star





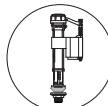
Special Note

Special Note
For compliance with AS1428.1 the seat and flush button are supplied in a dark blue colour to provide contrast for vision impaired individuals.
The seat also has lateral stabilisers fitted for people with ambulatory limitations and there is no seat lid.
Note that the design of the installation must comply with AS1428.1(2009)-Design for access and mobility

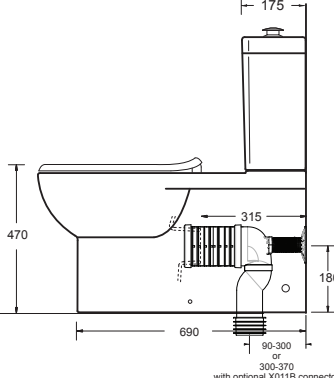
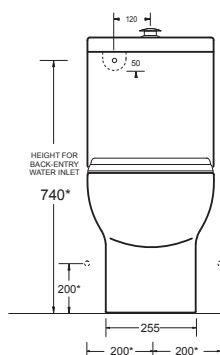
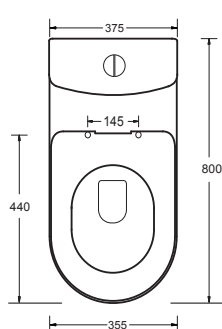


SUPPLIED WITH X011H ADJUSTABLE CONNECTOR
FOR S TRAP INSTALLATIONS
WHEN X011H IS USED, SET OUTS OVER 200mm MAY
REQUIRE THE INSTALLER TO ADD A BLOCK
EXTENSION TO THE WALL, ENABLE THE CONNECTOR
PROP TO REACH BACK TO THE WALL.

P TRAP HEIGHT 180mm



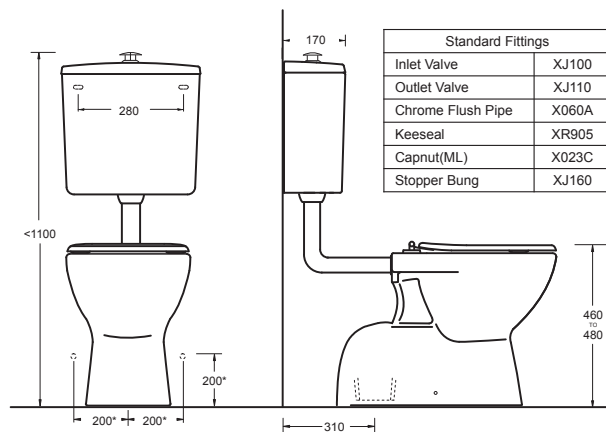
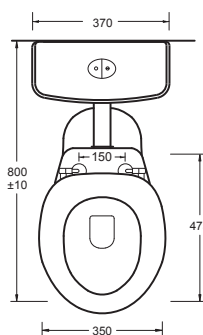
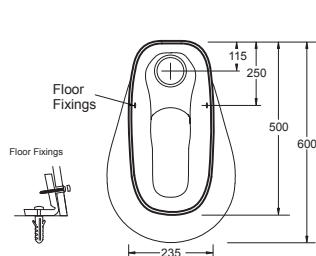
OPTIONAL INLET VALVE (X1210)
REQUIRED FOR BOTTOM
WATER ENTRY INSTALLATIONS



Standard Fittings	
Inlet Valve	XI230
Outlet Valve	XJ114
Stopper Plug	XJ160
Cistern Collar	XJ161
Hose Fitting	XJ190
½" Hose 300mm	XJ191
½" Hose 600mm	XJ192
Cistern Bolts	XI193

* RECOMMENDED WATER INLET LOCATIONS

300-370
with optional X011B connector



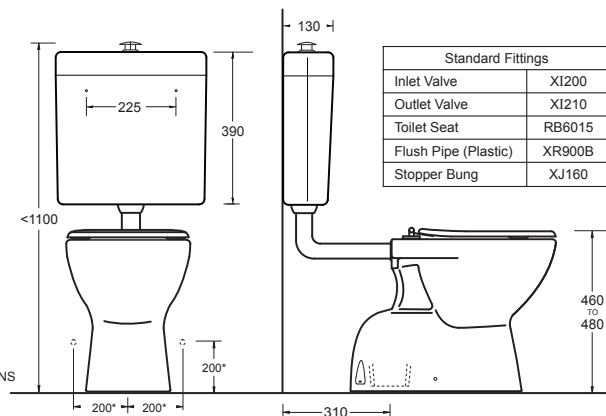
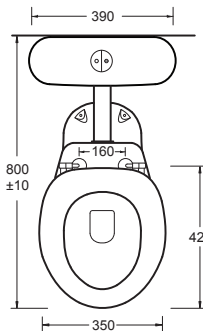
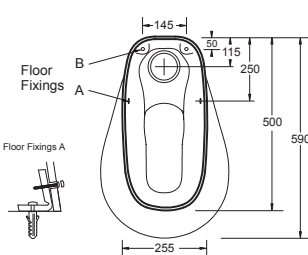
Standard Fittings	
Inlet Valve	XJ100
Outlet Valve	XJ110
Chrome Flush Pipe	X060A
Keeseal	XR905
Capnut(ML)	X023C
Stopper Bung	XJ160

* RECOMMENDED WATER INLET LOCATIONS

Special Installation Note

The Plaza Assist Special Needs Suite is designed to comply with AS1428.1(2009) -Design for access and mobility.

It is essential that the complete sanitary facility installation adheres to this standard - specified circulation clearances, grab-rails, and other accessories must be in compliance.



Standard Fittings	
Inlet Valve	XI200
Outlet Valve	XI210
Toilet Seat	RB6015
Flush Pipe (Plastic)	XR900B
Stopper Bung	XJ160

* RECOMMENDED WATER INLET LOCATIONS

Special Installation Note

The Select Assist Special Needs Suite is designed to comply with AS1428.1(2009) -Design for access and mobility.

It is essential that the complete sanitary facility installation adheres to this standard - specified circulation clearances, grab-rails, and other accessories must be in compliance.

TOILET SUITES

PLAZA AMBULANT DELUXE VC TOILET SUITE

LINK TOILET SUITES

J2031.J2201W.DF
(double flap seat)

J2031.J2201W.SF
(single flap seat)

Extra height link suite with vitreous china cistern
Includes white standard/soft close seat with fitted plastic link
Flexible S Trap Set out range – 140-160mm
Wels 4 Star

(*Optional Anti-Vandal Kit - Not provided)



SELECT AMBULANT DELUXE PLASTIC TOILET SUITE

LINK TOILET SUITES

J2031.RG21016.DF
(double flap seat)

J2031.RG21016.SF
(single flap seat)

Extra height link suite with plastic cistern
Includes white standard close seat with fitted plastic link
Flexible S Trap Set out range – 140-160mm
L/R adjustable water inlet
Wels 4 Star

(*Optional Anti-Vandal Kit - Not provided)



LIFE SLOP HOPPER TOILET SUITE

SLOP HOPPER
J2765.XC150.J2981

Wall faced vitreous china slop hopper
Sturdy stainless steel grate
Includes dual flush mechanical in-wall cistern
Choice of buttons styles available (see opposite page)

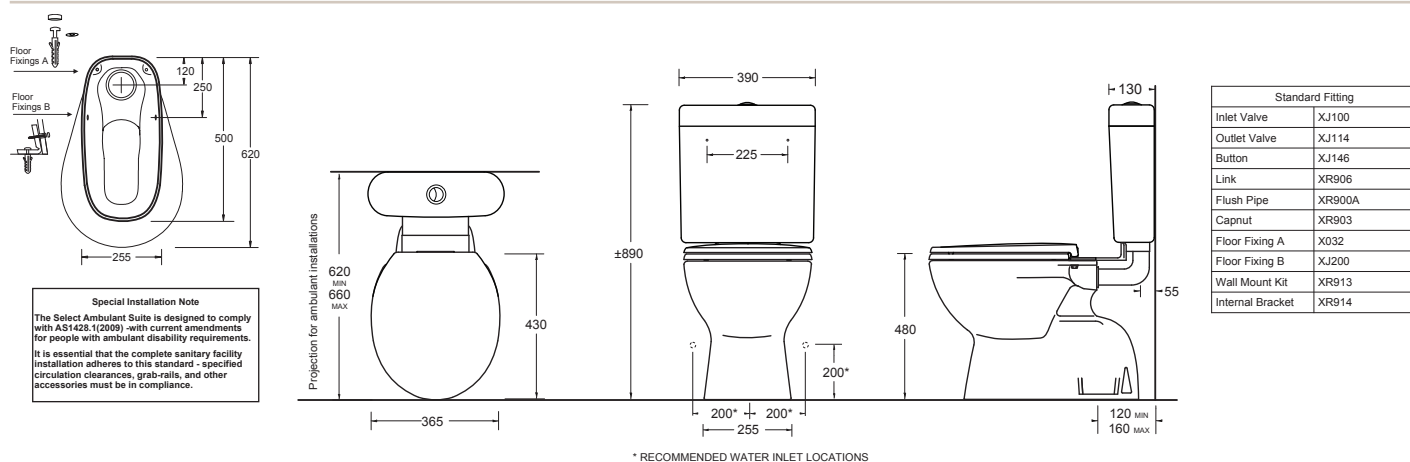
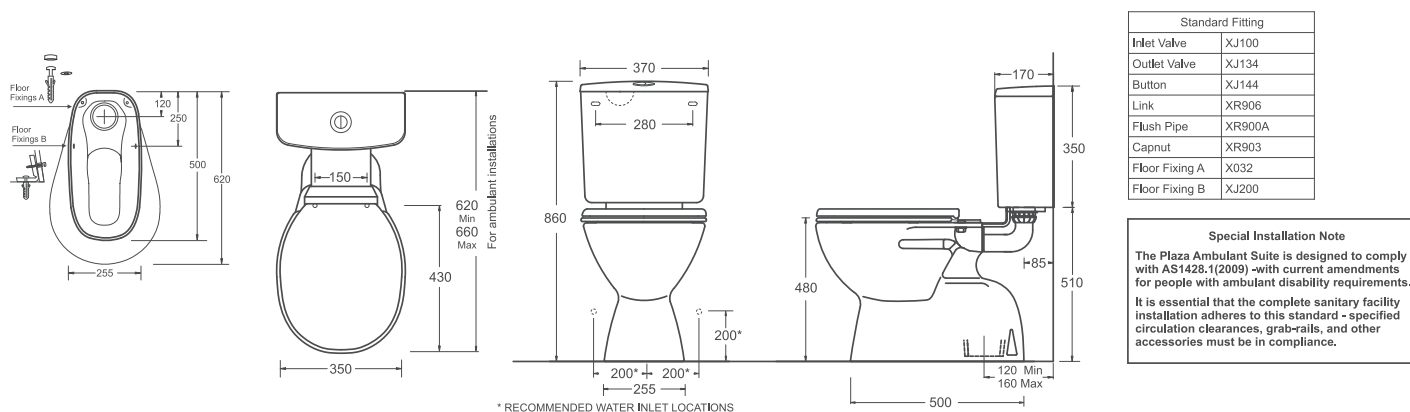


MODENA FLOOR MOUNTED BIDET

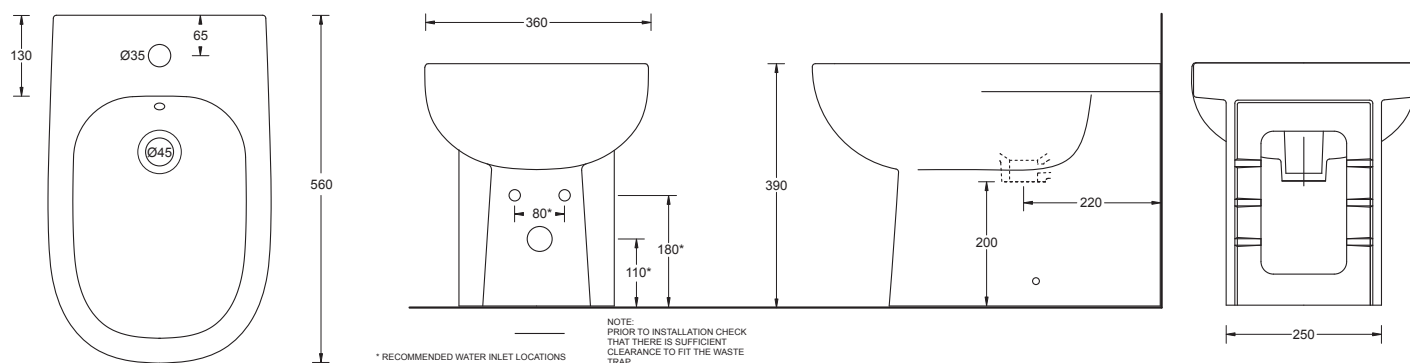
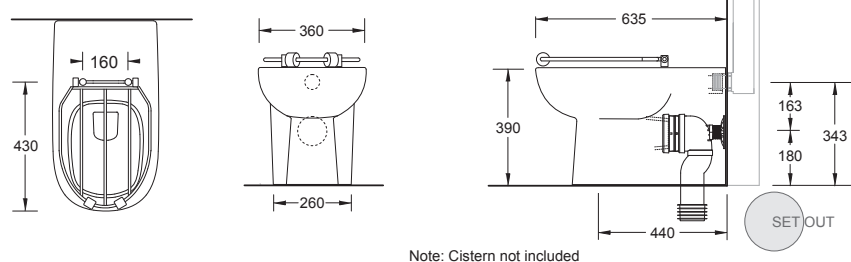
WALL HUNG
J2589

Standard pedestal style over-rim bidet
Durable, hygienic glaze finish
1 taphole with overflow
Floor fixings supplied
Plastic O/Flow Plug & Waste 32/40mm included





RECOMMENDED IN WALL CISTERNS:
ECONOFLUSH UNFRAMED - CODE J2981
ECONOFLUSH AIR UNFRAMED - CODE J2982





Schell Electronic Valve Cover Plate (J6209)



Schell HF Electronic Flush Valve Rough-In Kit (J6203) & Fit-Out Kit (J6206)

LIFE HF ELECTRONIC URINAL

URINAL

J6010.J6200

SIZE: 670 mm x 360 mm

Practical wall-mounted single urinal with flushing solenoid and sensor supplied

Simple urinal mounting with waste trap fitting supplied

Back (concealed) water entry urinal

Wels 4 Star



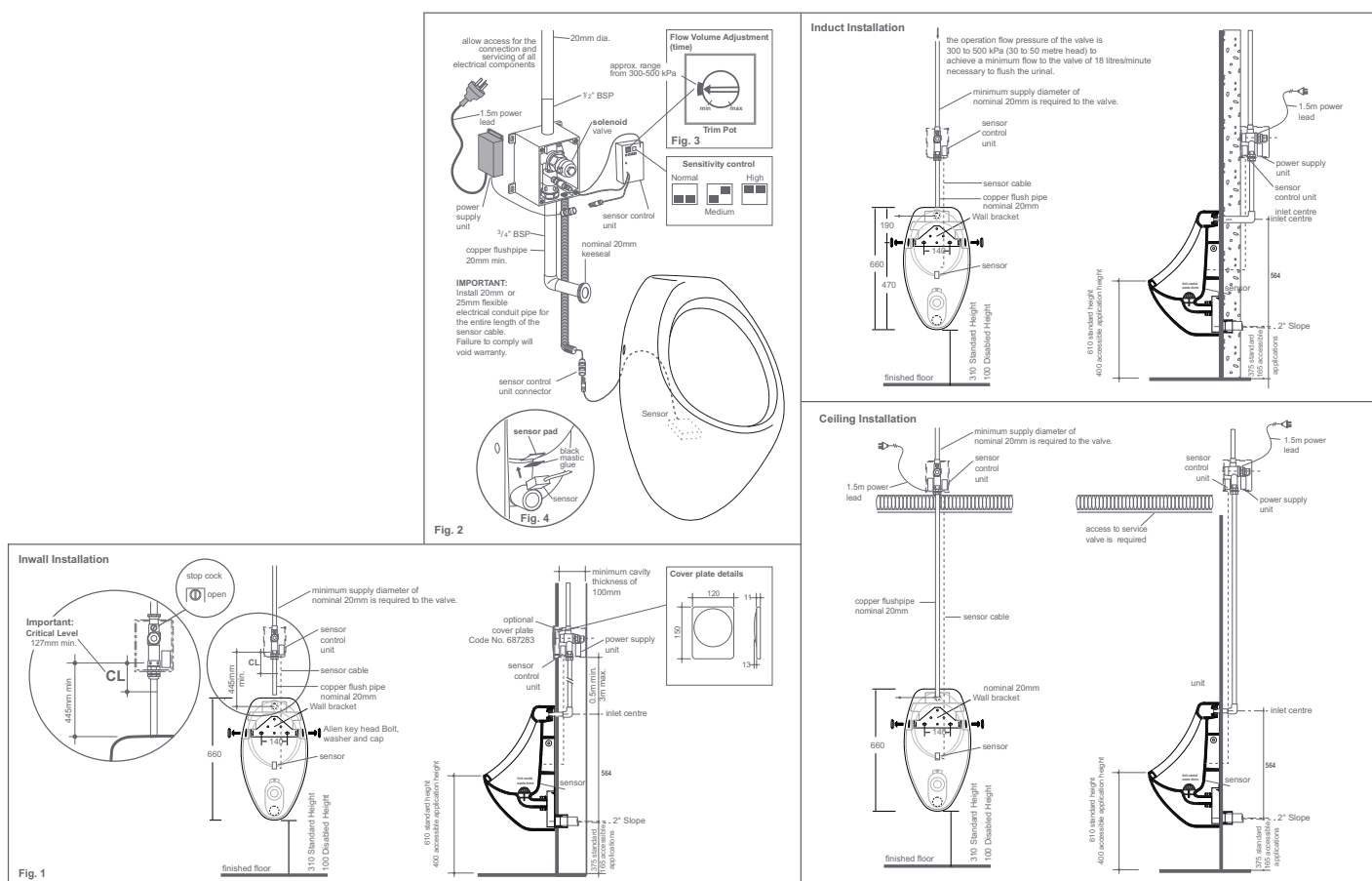
FLUSH VALVE BENEFITS:

The HF Electronic Flush Valve excels when hygiene standards and reliability are paramount, as the touch-free, sensor-controlled flush is particularly hygienic in high-use environments. The concealed position of the flush valve, control system and power supply enables the HF Electronic Flush Valve to endure tough everyday usage. The components can be located either in-wall, induct, or behind a robust stainless steel front cover.

The encapsulated, corrosion-proof LC sensor is located behind a vandal-proof trap cover and reliably detects the flush flow required by the user - advanced microwave technology only flushes when liquid is detected, improving water usage dramatically when compared to traditional ceiling-mounted sensor systems.

The Stagnation Flush feature automatically flushes every 24 hours, improving hygiene, product lifespan, and cleaning time by preventing the build-up of waste, whilst Stadium Mode also reduces water usage during ultra-high use periods.

Even the programming of the HF Electronic Flush Valve is reliable and simple; the three water-saving flush programmes can be set via an external reed switch with a magnetic key. Maintenance is made easy by the integrated service programme (with cleaning stop, cleaning flush and interval flush for intensive cleaning) and diagnostics programme (for checking the solenoid valve, sensor and battery capacity).



Advantages:

- Hygienic and vandal-proof control
- Universal usage for all ceramic and stainless steel bowls
- 3 water-saving flush programmes adjustable externally via a magnetic key
- Either mains or battery operated
- Integrated stagnation flush
- Stadium operation
- Integrated overflow protection
- Odour trap monitoring even at a low water level
- Hybrid programme
- Solenoid is able to process 70°C water to allow for Thermal Disinfection in clinical settings.

Technical specifications:

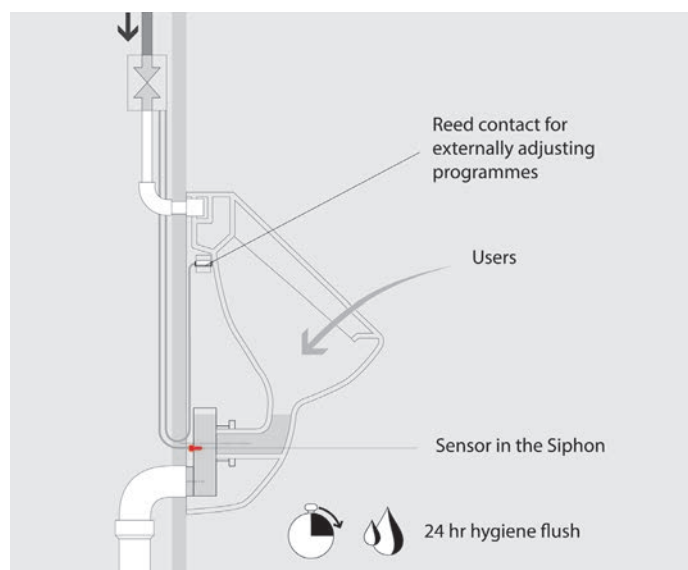
- Flow pressure: 0.8 - 5 bar
- Flush rate: 0.3 l/s
- Flush volume: 1 or 2 l
- Noise class: I
- Valve connection: T 1/2 MT

Compatible with:

- Johnson Suisse Life Urinal - Back Entry (J6010)

Item Code

- J6010.J6200 - Johnson Suisse Life Urinal with electronically activated flushing



HF electronic flush valve placed above urinal

ASSIST GRAB RAIL 300MM / 600MM / 900MM

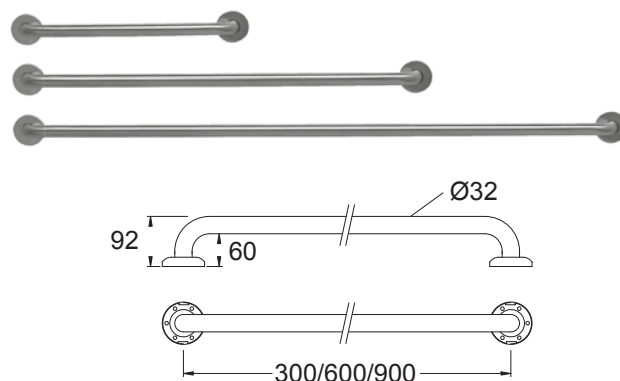
STRAIGHT GRAB RAILS

BR1030 (300mm)
BR1060 (600mm)
BR1090 (900mm)



Compliant with appropriate requirements of AS1428.1 for disabled and assisted living.

Functional grabrail set can be installed compliant with AS1428.1
Satin finished 32mm diameter stainless steel
Concealed wall fixings



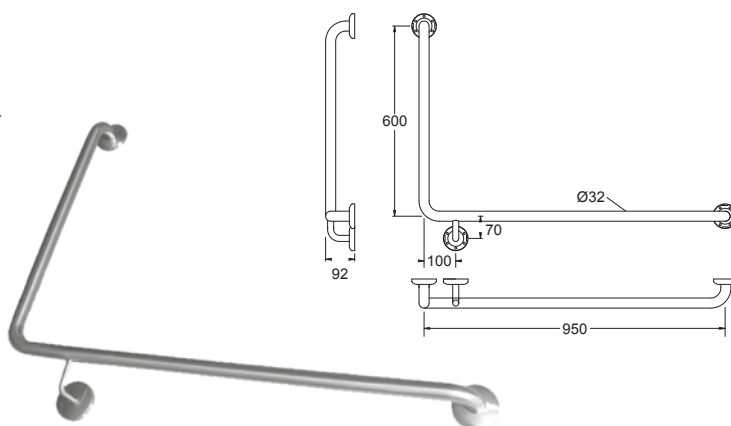
ASSIST GRAB RAIL LEFT / RIGHT 90°

90° GRAB RAILS
BR9460L / BR9460R



Compliant with appropriate requirements of AS1428.1 for disabled and assisted living.

Functional grabrail set can be installed compliant with AS1428.1
Satin finished 32mm diameter stainless steel
Concealed wall fixings
Available in left or right handed options



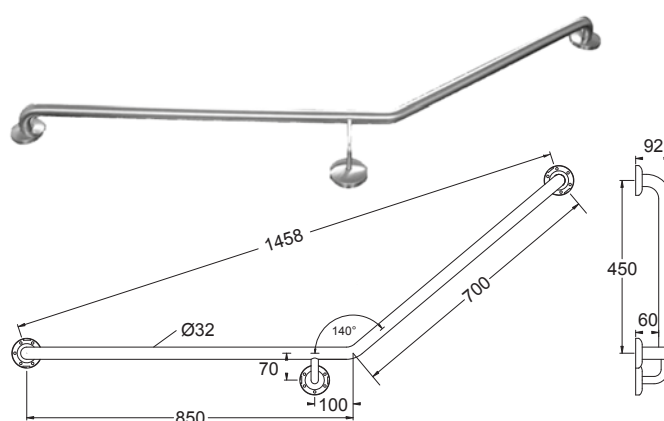
ASSIST GRAB RAIL LH / RH 140°

ANGLED GRAB RAILS
BR8570L / BR8570R



Compliant with appropriate requirements of AS1428.1 for disabled and assisted living.

Functional grabrail set can be installed compliant with AS1428.1
Satin finished 32mm diameter stainless steel
Concealed wall fixings
Available in left or right handed options



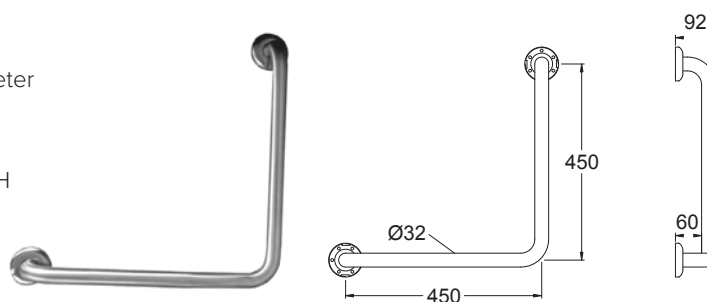
AMBULANT GRAB RAIL 90°

90° GRAB RAILS
BR4545



Compliant with Ambulant sections of AS1428.1 – Design for access and mobility

Functional grabrail set can be installed compliant with AS1428.1
Satin finished 32mm diameter stainless steel
Concealed wall fixings
Suitable for either LH or RH installation



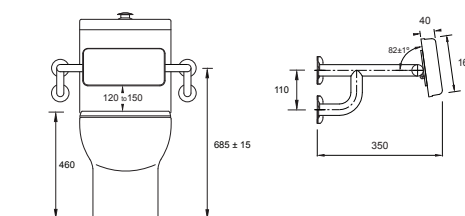
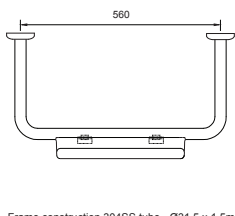
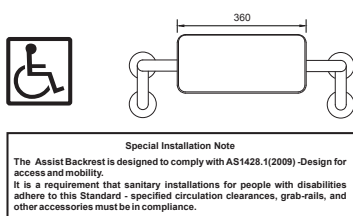
ASSIST BACKREST

BACKREST
BR1002



Compliant with appropriate requirements of AS1428.1 for disabled and assisted living.

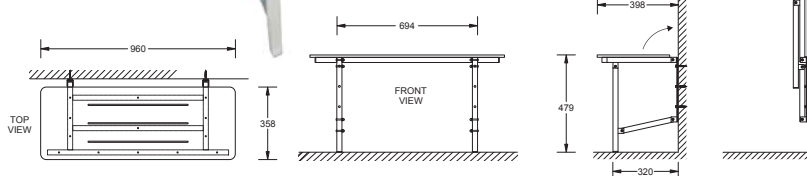
Universal design that complies with AS1428.1 when installed to instructions
Quality 32mm stainless steel frame with cushion pad
Robust concealed wall fixings
Can be used with all Assist toilets



SHOWER SEAT 960

SHOWER SEAT
JSS001

Universal design that complies with AS1428.1 when installed to instructions
Quality stainless steel frame construction with durable self-draining plastic seat
Folds flat to wall when not required
Robust wall fixings



GRAB RAIL 900MM / 600MM WITH SQUARE HAND SHOWER AND BRACKET

GRAB RAILS + HAND SHOWER
CT301.31CP.313.90 (900MM RAIL)
CT301.31CP.313.60 (600MM RAIL)

Multi-function square shower head with 1.5m hose and wall bracket
Satin finished 32mm Ø stainless steel grab rail with concealed wall fixings
Inlet Pressure 50 to 750kpa
Water temperature 80 degree max
Shower is suitable for Independent Living applications only, and is not compliant with disabled sections of AS1428.1 Design for Access and Mobility
WELS 1 Star



GRAB RAIL 900MM / 600MM WITH ROUND HAND SHOWER AND BRACKET

GRAB RAILS + HAND SHOWER
MTMS13.14.15.90 (900MM RAIL)
MTMS13.14.15.60 (600MM RAIL)

110 mm Ø chrome-plated ABS Shower Head with silicone nozzles, hose, and wall mounted bracket
Satin finished 32mm Ø stainless steel grab rail with concealed wall fixings
Shower is suitable for Independent Living applications only, and is not compliant with disabled sections of AS1428.1 Design for Access and Mobility
WELS 1 Star



By  marbletrend



PALERMO FREESTANDING 1600 BATH

FREESTANDING
D7WHWHM

SIZE: L1600 x W800 x H600

Freestanding rectangular bath design with
adjustable legs - fully self supporting

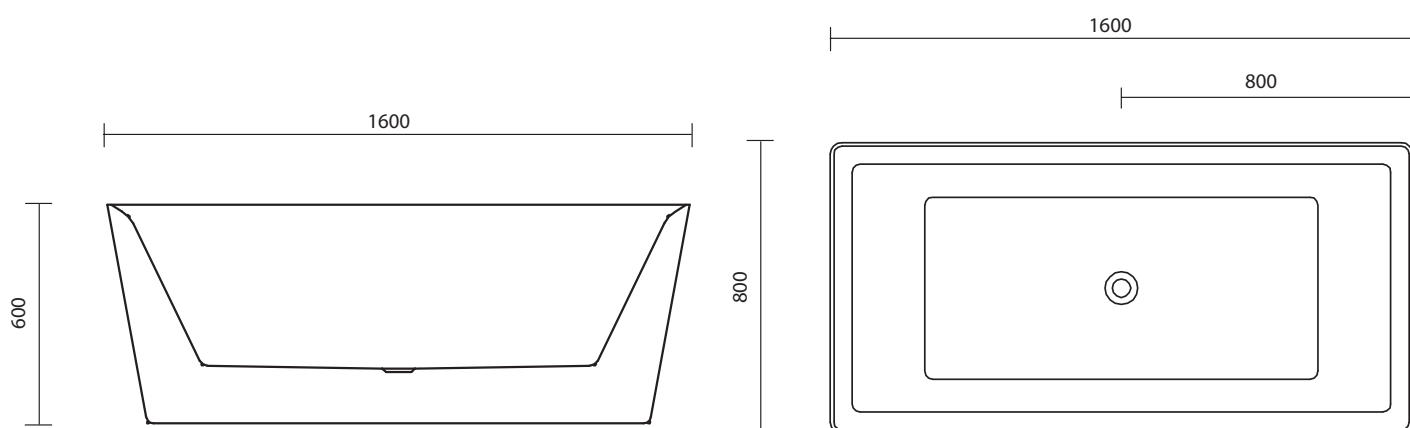
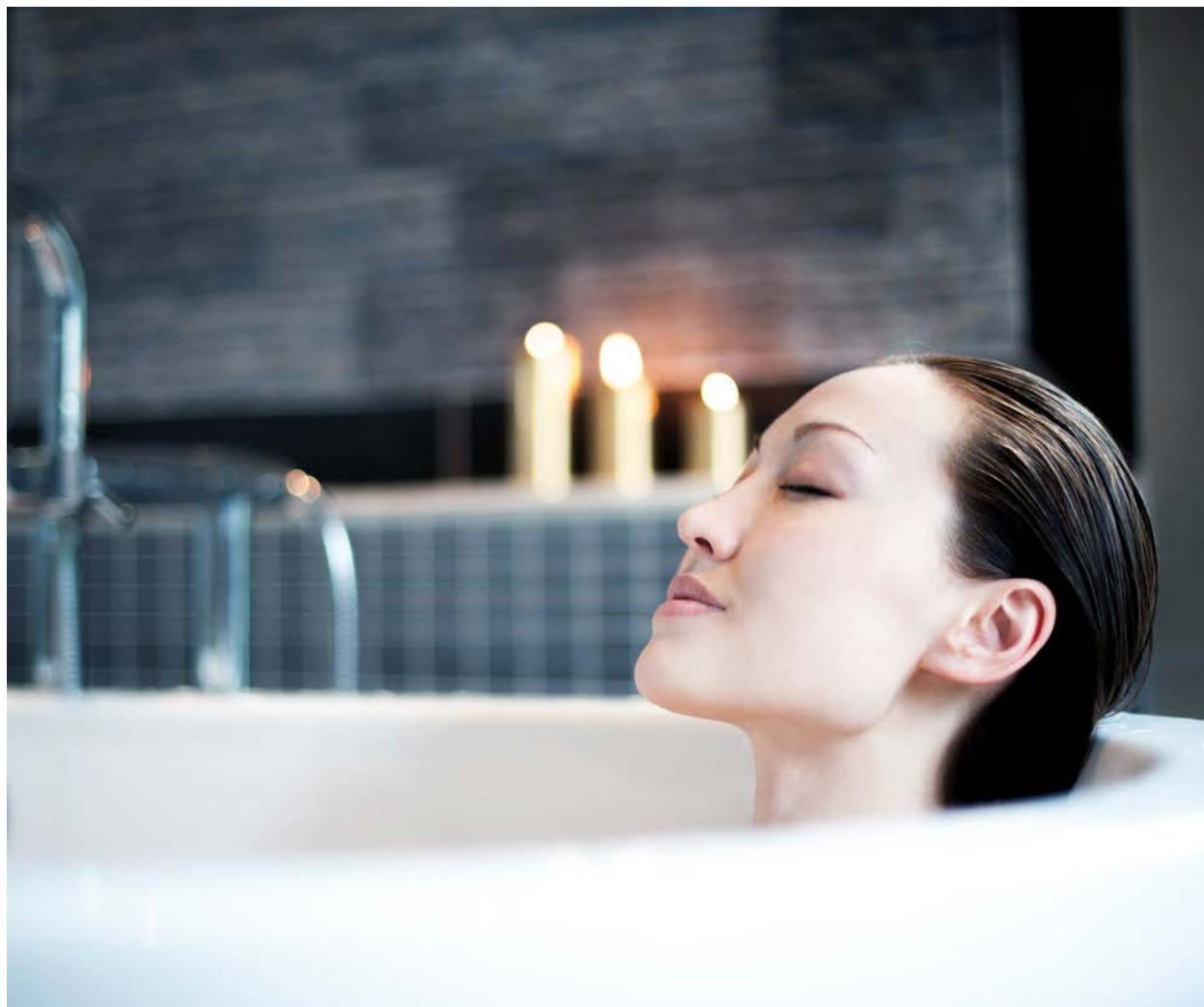
Sidewall and bath seamlessly fused together

Sanitary grade acrylic, fibreglass reinforced with
polyester resin

Chrome pop-up waste and overflow

Capacity 262L





TIVOLI FREESTANDING 1500 / 1700 BATH

FREESTANDING
D3WHWHM

SIZE: L1700 x W700 x H610
Contemporary freestanding bath design
with adjustable legs - fully self supporting
Sidewall and bath seamlessly
fused together
Sanitary grade acrylic, fibreglass reinforced
with polyester resin
1500mm version available - D3WHWHS
1500 Capacity - 178L
1700 Capacity - 216L



MERGE MKII FREESTANDING 1750 BATH

FREESTANDING
M2WHWH.FR

SIZE: L 1740 x W 800 x H 600
Contemporary freestanding bath
design
Two piece construction
Sanitary grade acrylic, fibreglass
reinforced with polyester resin
Adjustable legs - fully self
supporting
Capacity 228L

By  marbletrend



MERGE MKII ISLAND 1750 BATH

FREESTANDING
M2WHWH.IS

SIZE: L1740 x W800 x H600
Sanitary grade acrylic, fibreglass
reinforced with polyester resin
Frame support required
Capacity 228L

By  marbletrend

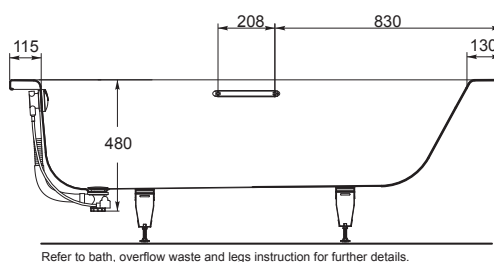
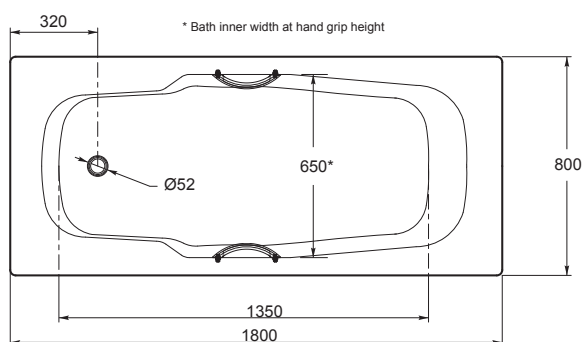
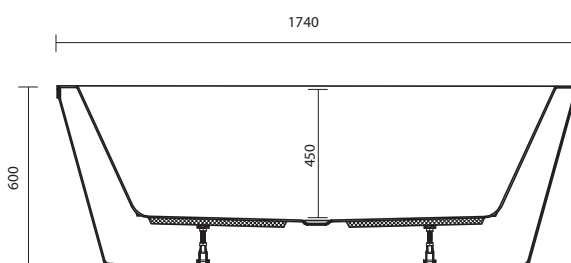
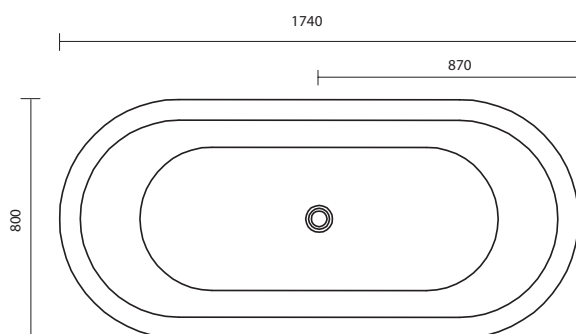
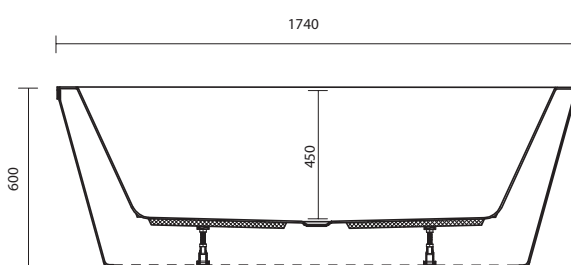
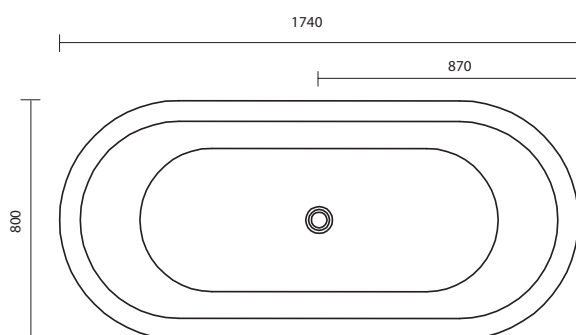
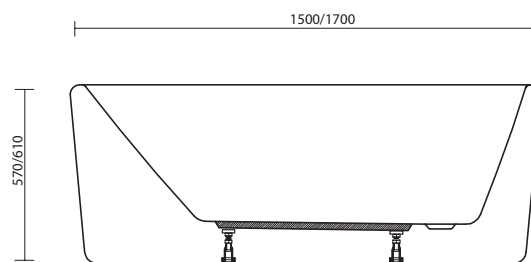
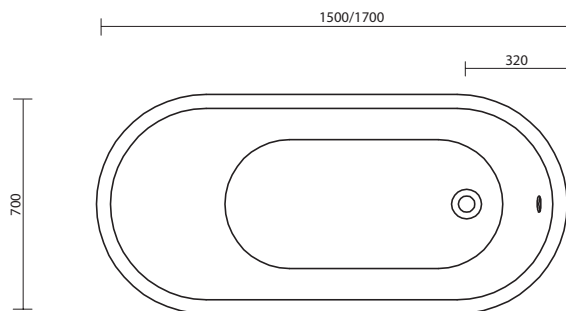


ATLANTICA GRANDE 1800

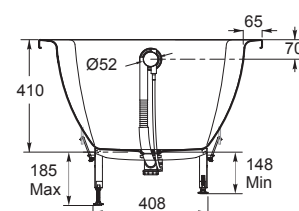
FREESTANDING
J5030.42.44

SIZE: L1800 x W800 x H410
Spacious anatomical bath design
European quality pressed steel bath
Durable scratch-resistant enamel
Chrome hand grips
Approved overflow kit
& pop-up waste
Capacity – 210 Litres
Compliant with AS 2023-1995 Baths
for ablutionary purposes





Refer to bath, overflow waste and legs instruction for further details.

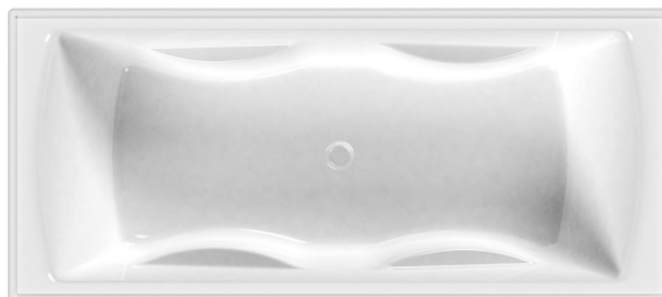


SELECT MKII 1800 BATH

INSET
J5180

SIZE: L1800 x W800 x H480

Rectangular form
twin bath design
Sanitary grade acrylic,
fibreglass reinforced with
polyester resin
Integrated tiling lip on all edges
Anti-slip surface on base
Capacity 280L



SELECT MKII 1600 / 1500 BATH

INSET
J5166 (1600)
J5152 (1500)

SIZE: L1660 x W750 x H420

Rectangular form bath design
with sanitary grade acrylic,
fibreglass reinforced with
polyester resin
Integrated tiling lip on all edges
Anti-slip surface on base
1500 Capacity - 175L
1600 Capacity - 235L



ESTI 1700 / 1500

INSET
J5152

SIZE: L1700/1500 x W700 x H385

Modern, comfortable bath design
European quality pressed steel
bath
Durable scratch-resistant enamel
Also available with Anti-slip
surface -J5000A
1700 Capacity - 190L
1500 Capacity - 170L

By marbletrend



PROJECT PREMIUM INSET 1675 / 1500 BATH

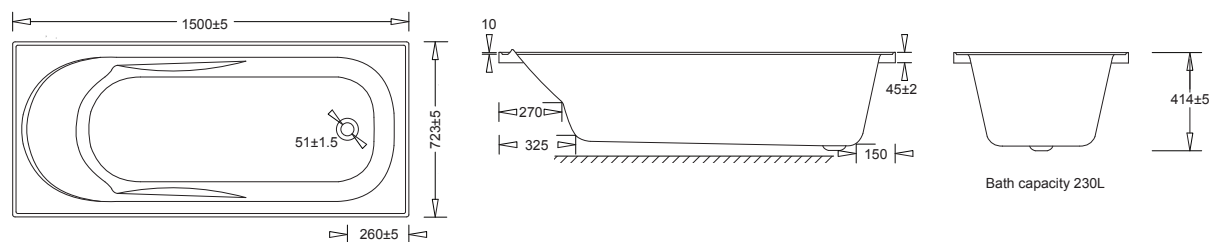
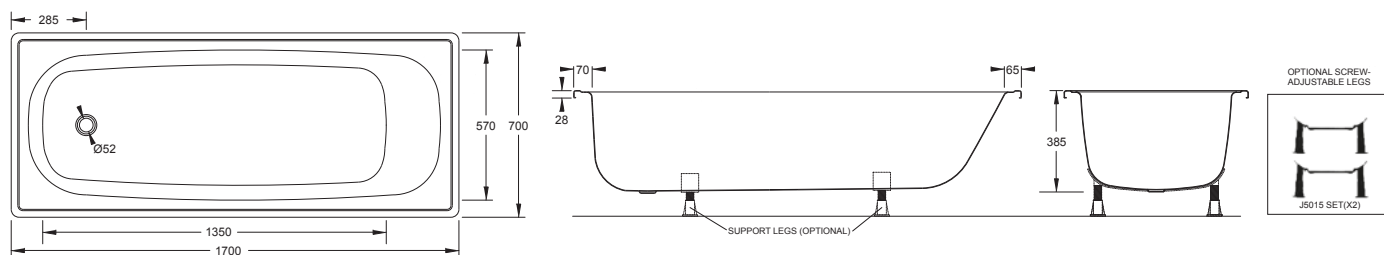
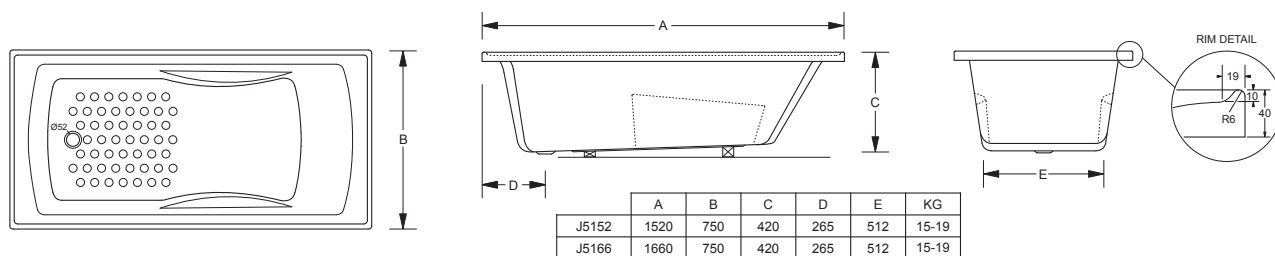
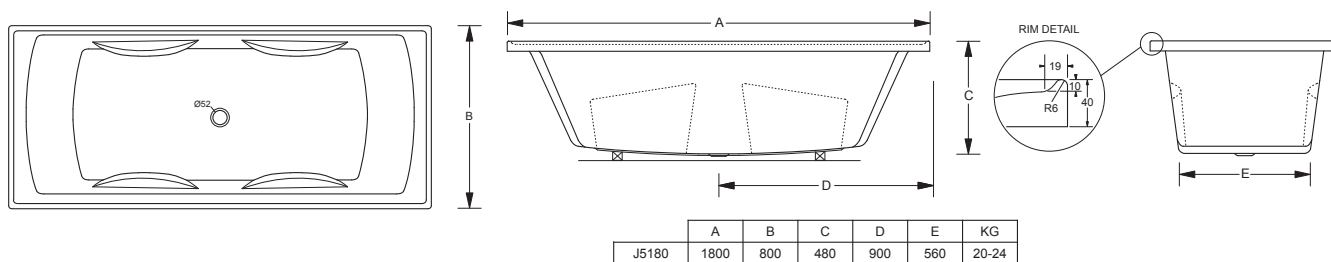
INSET
J5116 / J5115

SIZE: L1500 x W723 x H415

Contemporary bath design
Anti-slip surface on base
Sanitary grade acrylic,
fibreglass reinforced with
polyester resin
Integrated tiling lip on all edges
Capacity 215L

By marbletrend







ELECTRONIC TAP E-MODUS

In partnership with Schell, Johnson Suisse product innovations allow you to reduce water consumption, providing savings in to the overall consumption of the building, contributing to a more efficient and sustainable environment. The Modus electronic basin mixer is the perfect choice for public and commercial sanitary facilities helping to achieve up to 60% water reduction in comparison to a conventional single lever basin mixer.

Hygiene in public, semi-public and commercial sanitary areas is becoming a major focal point for public safety. The Modus electronic basin mixer has a touch-free sensor tap that automatically turns on and off. It's solenoid manufactured for 70°C water supply for 10 seconds to kill legionnaires disease. This makes Modus E the ideal tap for heavy use bathrooms. It's handsfree technology at its very best.

TAP E-MODUS COLD JTM121C

SIZE: H138 mm x D105 mm

Compact fixed-spout sensor activated cold/tempered water basin tap

Bright chrome finish with European quality and reliability

Hygienic contactless IR sensor operation

Mains supply connection.
Battery activation option

6 Star



TAP E-MODUS HOT/COLD JTM121M

SIZE: H138 mm x D105 mm

Compact fixed-spout sensor activated basin mixer

Bright chrome finish with European quality and reliability

Hygienic contactless IR sensor operation

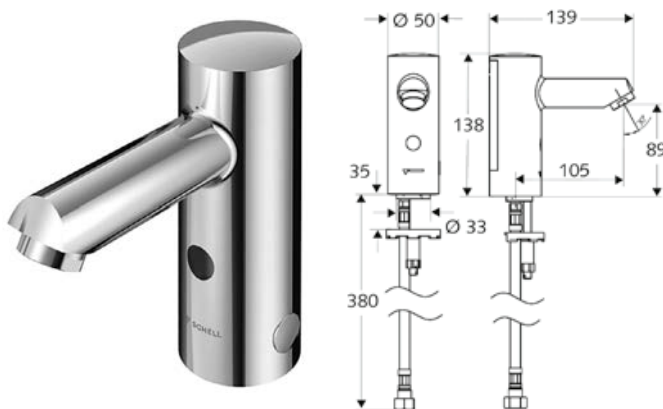
Convenient mixing lever for temperature adjustment

6 Star

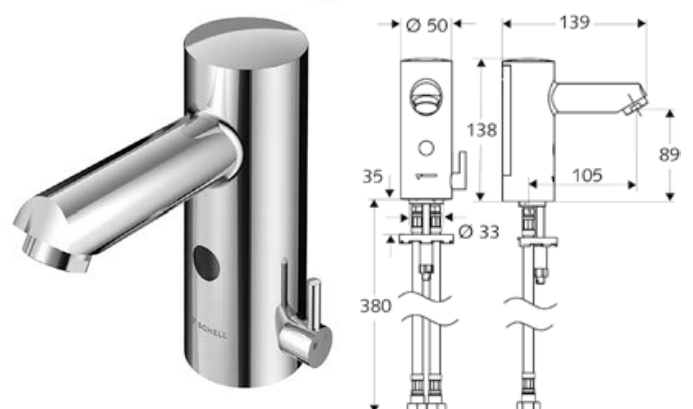


 **SHELL**





TAP E-MODUS COLD
JTM121C



TAP E-MODUS HOT/COLD
JTM121M

SARDINA BASIN MIXER

TAPWARE
MTS121

SIZE: 163 x 110

Attractive fixed-spout basin mixer

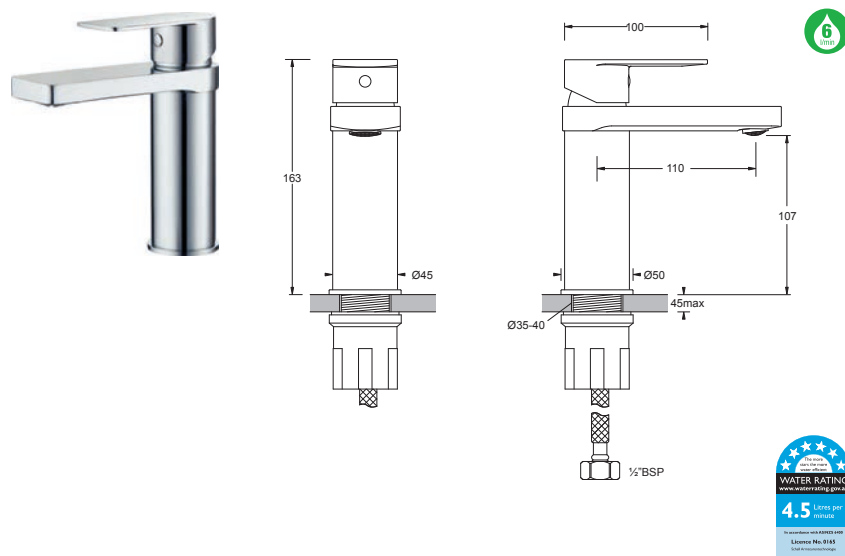
Single lever operation with flat lever design

Rectangular spout with aerator

Quality 35mm ceramic disc

Wels 6 Star

By  marbletrend



SARDINA XTRA BASIN MIXER

TAPWARE
MTS223

SIZE: 280 x 188

Attractive, tall(315mm) fixed-spout basin mixer

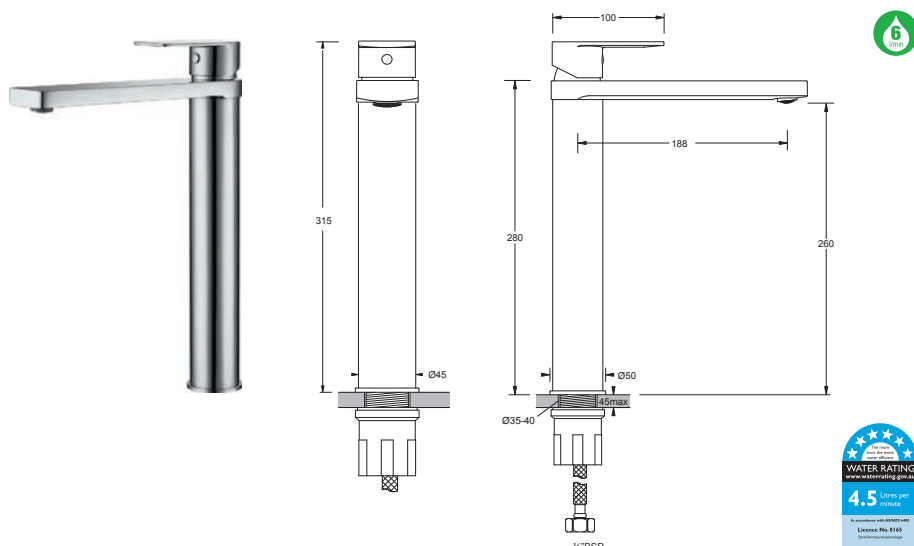
Extra height suitable for bench mounting with vessel type basins

Single lever operation with flat lever design

Rectangular spout with aerator

Wels 6 Star

By  marbletrend



SARDINA BASIN SET

TAPWARE
MTS313

SIZE: 105 x 110

Attractive styled fixed-spout basin set

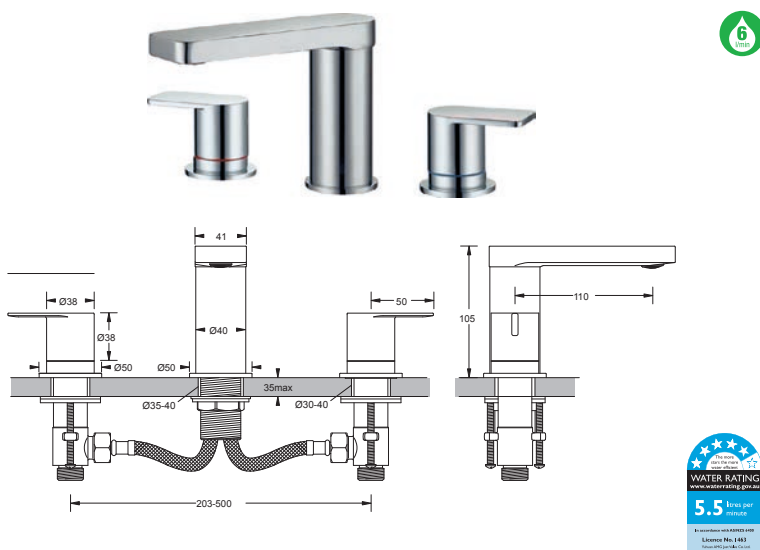
Dual quarter-turn lever activation for hot and cold mixing

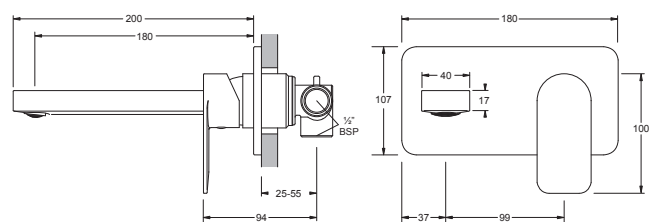
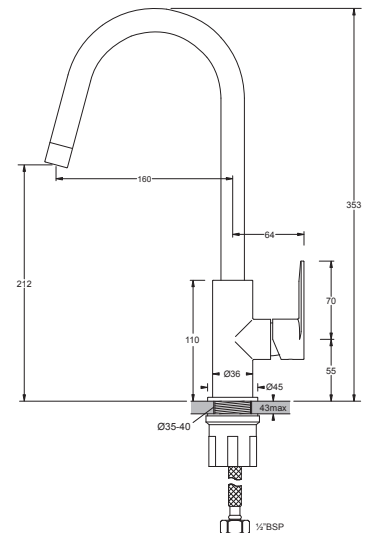
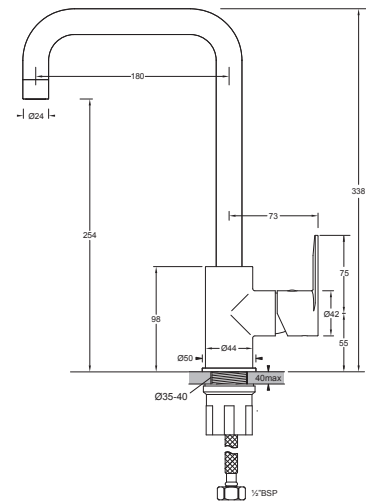
Flat lever design style and rectangular spout with aerator

Quality mixer cartridges

Wels 5 Star

By  marbletrend





SARDINA CONCEALED SHOWER MIXER

TAPWARE
MTS705

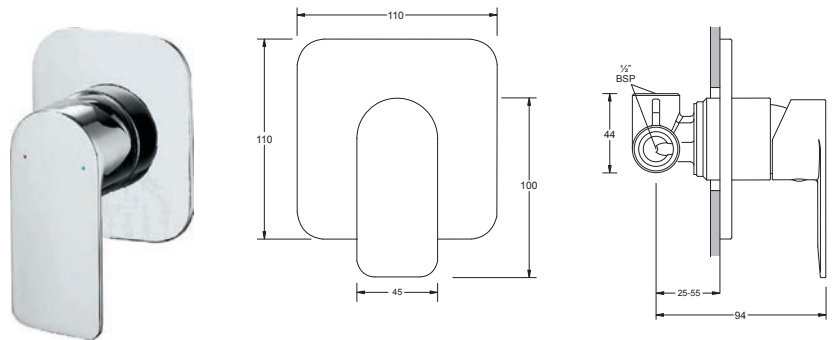
SIZE: 110 x 110

Attractive compact style concealed mixer
Single lever operation with flat lever design
Quality 35mm ceramic disc
Adjustable wall cover plate for
different wall thicknesses

By  marbletrend



Compliant with appropriate requirements of
AS1428.1 for disabled and assisted living.



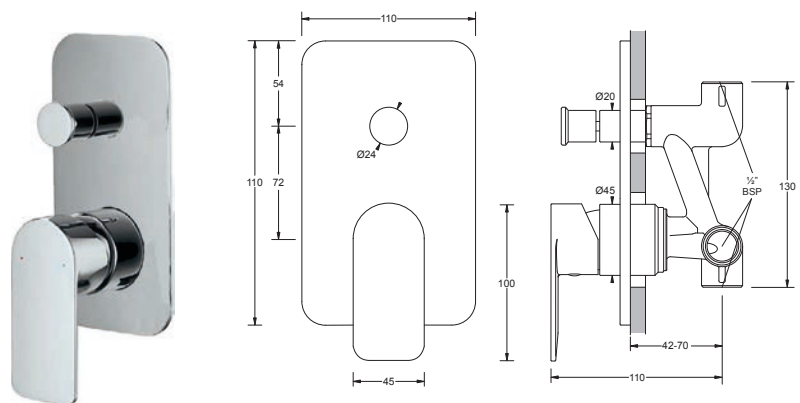
SARDINA CONCEALED DIVERTER MIXER

TAPWARE
MTS605

SIZE: 180 x 110

Attractive compact style concealed mixer
Diverter for bath or shower delivery
Single lever operation with flat lever design
Adjustable wall cover plate for
different wall thicknesses

By  marbletrend



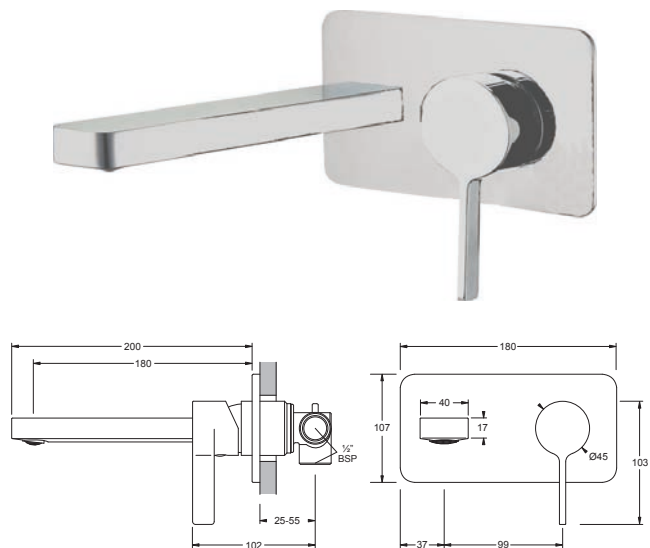
MADEIRA BATH/BASIN MIXER WITH SPOUT

TAPWARE
MTM505

SIZE: 180 x 107 x 200

Attractive wall mounted fixed-spout
bath/basin mixer
Single lever operation with vertical lever design
Rectangular spout with aerator
Adjustable wall cover plate for
different wall thicknesses
Wels 5 Star

By  marbletrend



MADEIRA BASIN MIXER

TAPWARE
MTM121

SIZE: 170 x 110

Attractive fixed-spout basin mixer

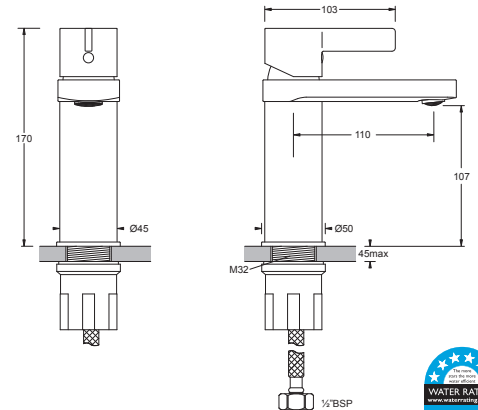
Single lever operation with vertical lever design

Rectangular spout with aerator

Quality 35mm ceramic disc

Wels 6 Star

By  marbletrend



MADEIRA XTRA BASIN MIXER

TAPWARE
MTM223

SIZE: 320 x 188

Attractive, tall(315mm) fixed-spout basin mixer

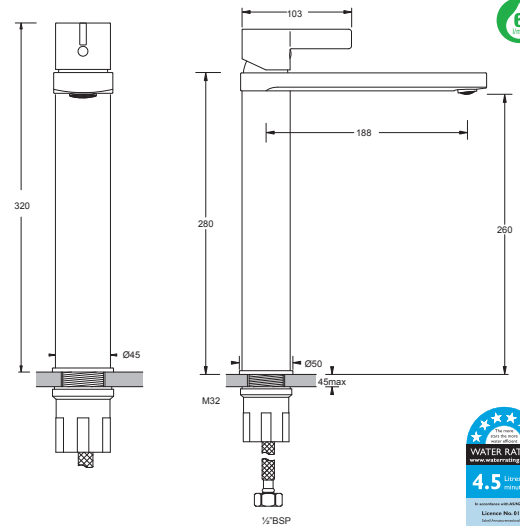
Extra height suitable for bench mounting with vessel type basins

Single lever operation with vertical lever design

Rectangular spout with aerator

Wels 6 Star

By  marbletrend



MADEIRA BASIN SET

TAPWARE
MTM313

SIZE: 105 x 110

Attractive styled fixed-spout basin set

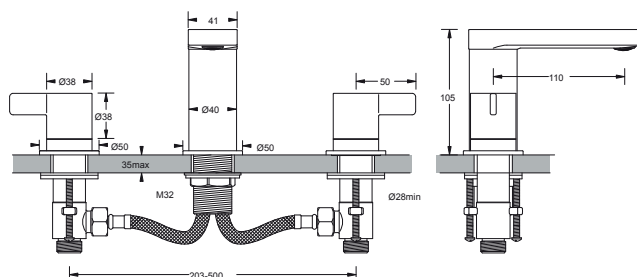
Dual quarter-turn lever activation for hot and cold mixing

Vertical lever design style and rectangular spout with aerator

Quality mixer cartridges

Wels 5 Star

By  marbletrend



MADEIRA SINK MIXER SQUARE

TAPWARE
MTM423

SIZE: 338 x 180

Attractive, tall square form
swivel-spout basin mixer

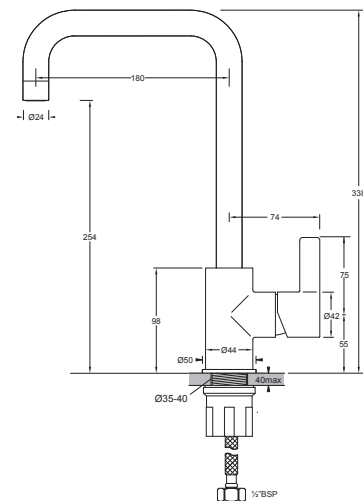
Single quarter-turn lever operation
with vertical lever design

Round spout with aerator

Quality 35mm ceramic disc

Wels 5 Star

By  marbletrend



MADEIRA SINK MIXER CURVED

TAPWARE
MTM403

SIZE: 353 x 160

Attractive, tall curved form
swivel-spout basin mixer

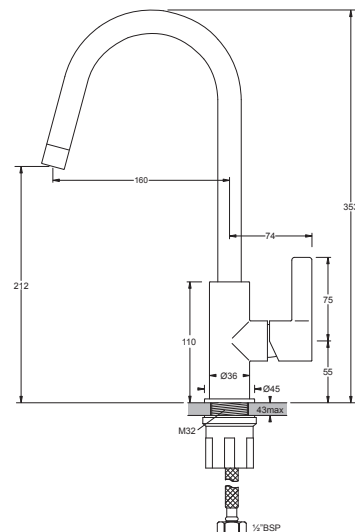
Single quarter-turn lever operation
with vertical lever design

Round spout with aerator

Quality 25mm ceramic disc

Wels 5 Star

By  marbletrend



MADEIRA CONCEALED SHOWER MIXER

TAPWARE
MTM705

SIZE: 110 x 110

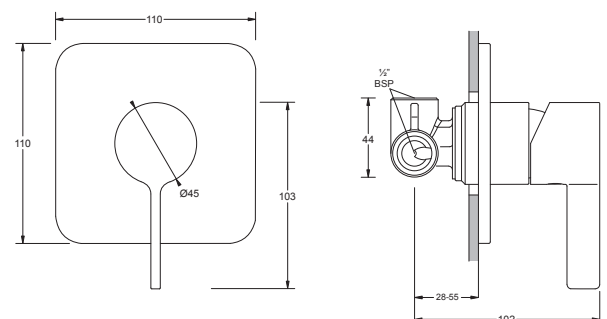
Attractive compact style concealed mixer

Single lever operation with vertical lever design

Quality 35mm ceramic disc

Adjustable wall cover plate for
different wall thicknesses

By  marbletrend



Compliant with appropriate requirements of
AS1428.1 for disabled and assisted living.

MADEIRA CONCEALED DIVERTER MIXER

TAPWARE
MTM605

SIZE: 180 x 110

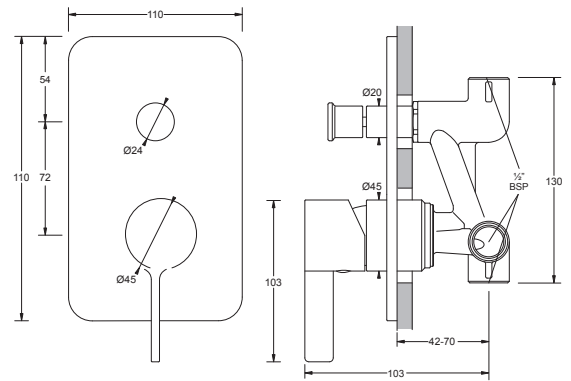
Attractive compact style concealed mixer

Diverter for bath or shower delivery

Single lever operation with vertical lever design

Adjustable wall cover plate for
different wall thicknesses

By  marbletrend



LIVING ASSIST BASIN MIXER

TAPWARE
JTL122

SIZE: 266 x 149

Special purpose mixer tap

Extended lever suitable for use
in Special Needs installations

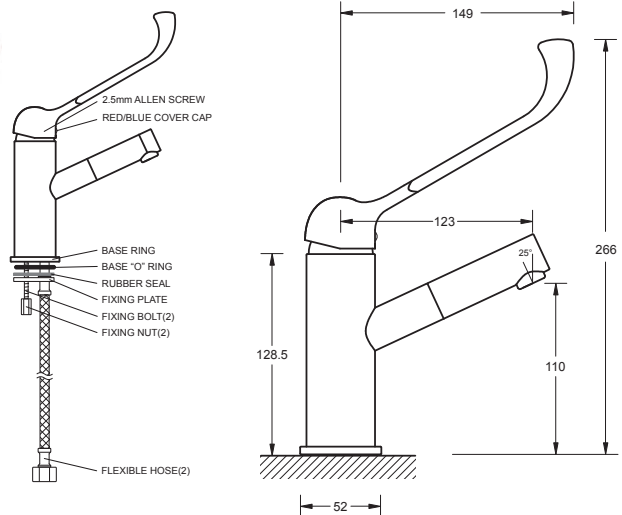
Durable chrome finish with
DZR brass body

35mm ceramic cartridge

Wels 5 Star



Compliant with appropriate requirements of
AS1428.1 for disabled and assisted living.



LIFE ASSIST BASIN MIXER

TAPWARE
JTL121

SIZE: 187mm x 155mm

Specialty mixer tap

Extended lever suitable for use
in Special Needs installations

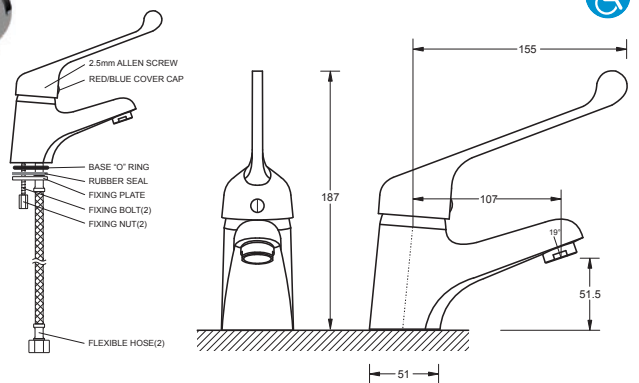
Durable chrome finish with
DZR brass body

40mm ceramic cartridge

Wels 5 Star



Compliant with appropriate requirements of
AS1428.1 for disabled and assisted living.



SQUARE RAIL SHOWER

TAPWARE

CT301.31CP.393

SIZE: H132 x W50

Stylish design with adjustable sliding rail

Chrome finish on durable solid brass

Inlet Pressure 50 to 750kpa

Water temperature 80 degree max

1 Star

By  marbletrend



SQUARE RAIN SHOWER + ARM

TAPWARE

CT353.CT367 (400MM WALL ARM)

CT353.CT363 (300MM CEILING ARM)

CT353.CT362 (200MM CEILING ARM)

SIZE: 250 mm x 250 mm

Attractive square rain shower with wall or ceiling mount arms (sold separately)

Chrome finish on durable solid brass

Inlet Pressure 50 to 750kpa

Water temperature 80 degree max

3 Star

By  marbletrend



SARDINA/MADEIRA HAND SHOWER WITH RAIL

TAPWARE

MTMS13.14.15.16

SIZE:

ABS Shower Head

Chrome plated with silicone nozzles

110 mm diameter

Includes hose and wall mounted slide rail

By  marbletrend





SARDINA/MADEIRA RAIN SHOWER & ARM

TAPWARE

MTMS12.08 (400MM WALL ARM)
 MTMS12.07 (300MM CEILING ARM)
 MTMS12.06 (200MM CEILING ARM)

SIZE: 200 mm D

ABS Shower Head

Chrome plated with silicone nozzles
 and chrome plated brass ceiling pipe

200 mm diameter

By  marbletrend





BAROSSA PIVOT FRAMELESS SHOWER

SHOWER SCREEN

The Barossa Pivot Frameless is a sleek shower screen with a minimal wall profile. This screen is easy to install and allows for up to +7mm of adjustment.

FEATURES AND BENEFITS

- Screen height 2000mm
- Pivoting door system
- Fully frameless 8mm glass
- Toughened safety glass AS/NZS2208
- Easy to clean Enduroshield glass treatment
- Fully reversible screen

APPLICATIONS

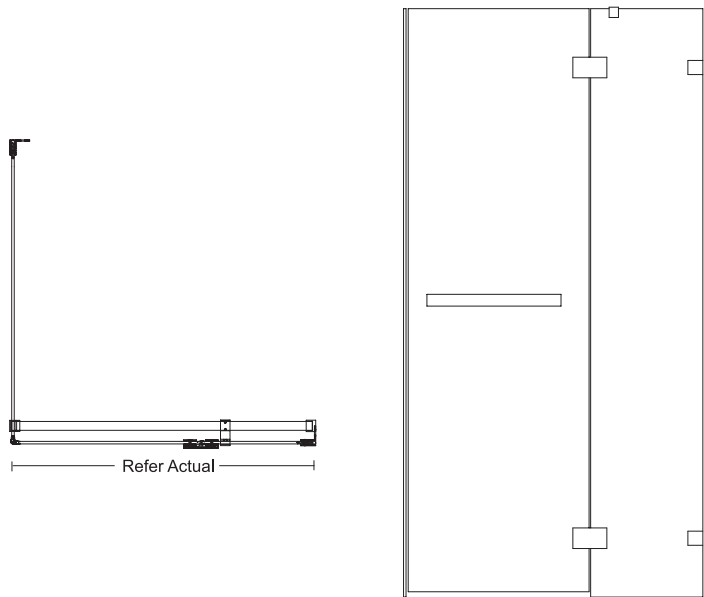
- Suits tiled floors
- Suits Flinders SMC, Daintree and Barossa bases

MATERIALS

- Aluminium frame
- 8mm safety glass

SIZES

Product	Actual Size	Front	Return
900 Chrome	min 860 (+7)	KSSPV26CHP	SSPV26CHR
1000 Chrome	min 960 (+7)	KSSPV40CHP	SSPV40CHR
1220 Chrome	min 1180 (+7)	KSSPV34CHP	



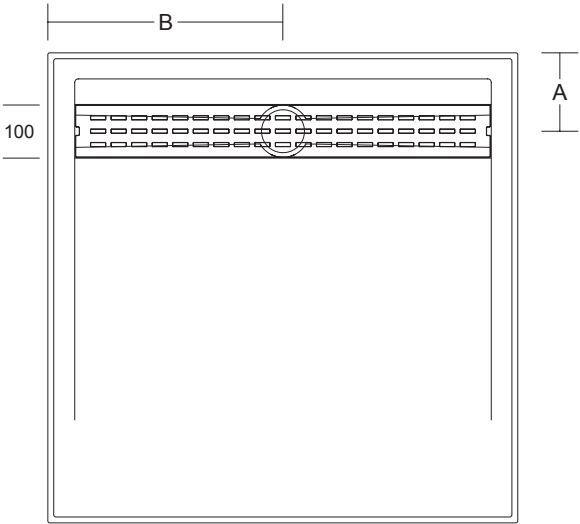
BAROSSA POLYMARBLE SHOWER BASE

SHOWER BASE

No grout and no joins, making it easy to clean
Self-supporting for easy installation
Solid, hardwearing material

MATERIAL	Polymarble
CONSTRUCTION	Self-supporting
STEP HEIGHT	40mm including lip
TILE LIP	9mm tile lip
ALCOVE FITTING	Yes
WASTE	50mm male thread, plus 304 grade stainless steel channel grate

STANDARD SQUARE WHITE:
KSBB26CW 900 W x 900 D x 40 H REAR OUTLET 150 450
KSBB40CW 1000 W x 1000 D x 40 H REAR OUTLET 150 500
KSBB34CW 1200 W x 900 D x 40 H REAR OUTLET 150 600
KSBB37CW 1500 W x 900 D x 40 H REAR OUTLET 150 750



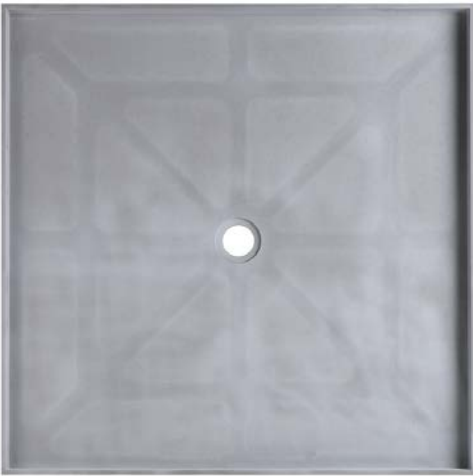
TILE TRAY

SHOWER BASE

Provides the look of a tiled floor, with the waterproofing of a base.
The Tile Tray is structurally sound, self-draining and can be installed directly to a floor joist.
Self-supporting and easy to trim for easy installation
No joins – 1 piece with moulded lip
Made from Bulk Moulding Compound (high compression moulded material)

PRODUCTS

TS28PF.OUTTCHS – 890W X 890D X 60H
TS48PF.OUTTCHS – 990W X 990D X 60H
TS41PF.OUTTCHS – 1200W X 890D X 60H



BAROSSA SLIDER SHOWER

SHOWER SYSTEM

With exposed rollers and a polished aluminium rail, 8mm toughened glass, easy to clean Enduroshield and a new slim design, the Barossa Slider is the king of shower screens.

FEATURES AND BENEFITS

- Screen height 2000mm
- Sliding door
- Semi-frameless 8mm glass
- Toughened safety glass AS/NZS2208
- Easy to clean glass, pre-treated with Enduroshield

APPLICATIONS

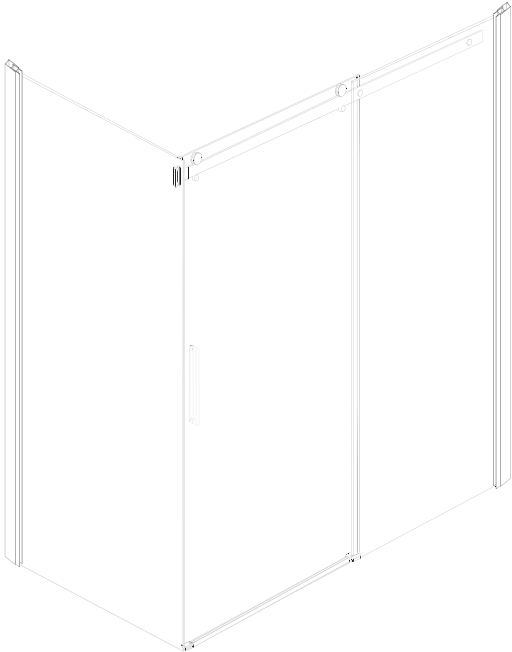
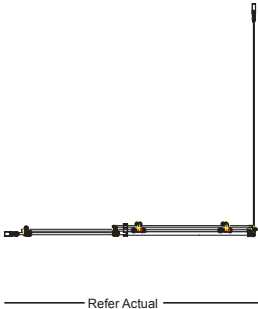
- Suits tiled floors
- Fully reversible screen suits Flinders SMC, Daintree & Barossa bases
- Front panel sets can be used in an alcove

MATERIALS

- Aluminium frame
- 8mm safety glass

SIZES

Product	Actual Size	Front	Return
900 Chrome	min 860 (+25)		SSBA26CHCLR
1220 Chrome	min 1155 (+25)	SSBA34CHCLS	
1500 Chrome	min 1170 (+25)	SSBA37CHCLS	



BAROSSA PIVOT SEMI-FRAMELESS SHOWER

SHOWER SCREEN

The Barossa Pivot Semi-Frameless is a sleek shower screen with a minimal wall profile. This screen is easy to install and allows for up to +25mm of adjustment.

FEATURES AND BENEFITS

- Screen height 2000mm
- Pivoting door system
- Semi-frameless 8mm glass
- Toughened safety glass AS/NZS2208
- Easy to clean Enduroshield glass treatment
- Fully reversible screen

APPLICATIONS

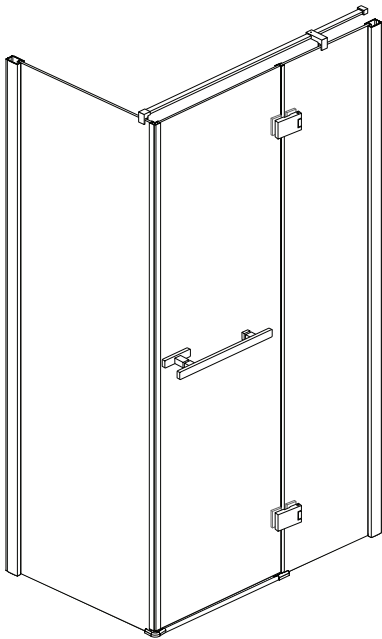
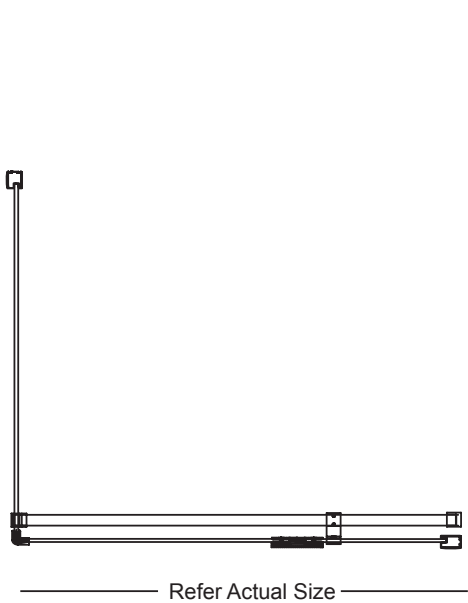
- Suits tiled floors
- Suits Flinders SMC, Daintree and Barossa bases

MATERIALS

- Aluminium frame
- 8mm safety glass

SIZES

Product	Actual Size	Front	Return
900 Chrome	min 860 (+25)	KSSPV26CHP	SSPV26CHR
1000 Chrome	min 960 (+25)	KSSPV40CHP	SSPV40CHR
1220 Chrome	min 1180 (+25)	KSSPV34CHP	



CORSICA BI-FOLD

SHOWER SCREEN

Designed with the small bathroom in mind, the Corsica Bi-Fold shower screen combines luxury and practicality. With its European inspired frame design, unique bi-fold system and 8mm toughened glass, this clever system is like no other.

FEATURES AND BENEFITS

- Pre-treated with Enduroshield, making it easier to clean
- Available in Black or Chrome
- Unique left hand or right hand bi-fold doors, perfect for small bathrooms

APPLICATIONS

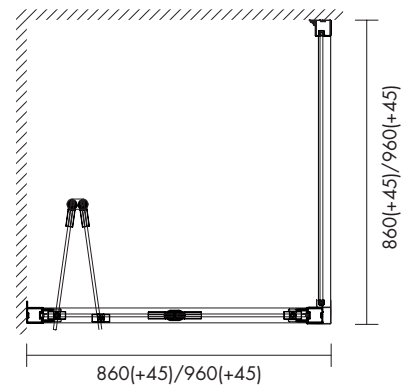
- Suits tiled floors
- Suits Daintree and Barossa bases
- Front panel sets can be used in an alcove

MATERIALS

- Aluminium frame
- 8mm safety glass

SIZES

Front Panel	900	min 860 (+45)
	1000	min 960 (+45)
Return Panel	900	min 860 (+45)
	1000	min 960 (+45)
Height	2000 mm	



DAINTREE POLYMARBLE

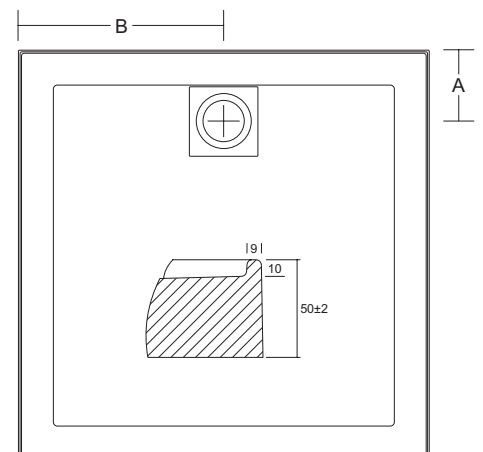
SHOWER BASE

The Daintree Polymarble shower base is self-supporting for easy installation, and features extra protection against leaks with built-in lips on all four sides.

- No grout and no joins, making it easy to clean
- Self-supporting for easy installation
- Solid, hardwearing material

SIZES

820 W x 820 D x 50 H REAR OUTLET
 900 W x 900 D x 50 H REAR OUTLET
 1000 W x 1000 D x 50 H REAR OUTLET
 1220 W x 900 D x 50 H REAR OUTLET



FLINDERS POLYMARBLE SHOWER BASE

SHOWER BASE

The Flinders Polymarble™ shower base is non-self-supporting and is made from Polymarble™ - a hardwearing, solid, fully moulded material ideal for bathroom surfaces.

FEATURES AND BENEFITS

- Polymarble™
- Mortar bed required – non self-supporting
- 73(±2)mm step height (including tile flange)
- 3 sided models only, 17mm tile flange
- Integrated waste with 50mm male thread

PRODUCTS

Standard Square White

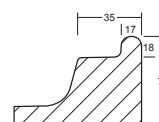
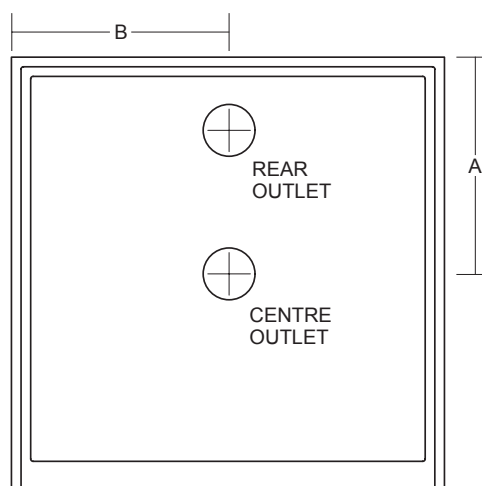
SB16CW 820 W x 820 D x 73 H REAR OUTLET 150 410
 SB17CW 820 W x 820 D x 73 H CENTRE OUTLET 410 410
 SB1LCW 820 W x 820 D x 73 H REAR OUTLET LHR 150 410
 SB1RCW 820 W x 820 D x 73 H REAR OUTLET RHR 150 410
 SB15CW 820 W x 820 D x 73 H REAR OUTLET DBL 150 410
 SB26CW 900 W x 900 D x 73 H REAR OUTLET 150 450
 SB28CW 900 W x 900 D x 73 H CENTRE OUTLET 450 450
 SB2LCW 900 W x 900 D x 73 H REAR OUTLET LHR 150 450
 SB2RCW 900 W x 900 D x 73 H REAR OUTLET RHR 150 450
 SB19CW 900 W x 900 D x 73 H CENTRE OUTLET DBL 450 450
 SB40CW 1000 W x 1000 D x 73 H REAR OUTLET 150 500
 SB4LCW 1000 W x 1000 D x 73 H REAR OUTLET LHR 150 500
 SB4RCW 1000 W x 1000 D x 73 H REAR OUTLET RHR 150 500
 SB48CW 1000 W x 1000 D x 73 H CENTRE OUTLET DBL 500 500
 SB32CW 1220 W x 820 D x 73 H REAR OUTLET 150 610
 SB34CW 1220 W x 900 D x 73 H REAR OUTLET 150 610
 SB41CW 1220 W x 900 D x 73 H CENTRE OUTLET 450 610
 SB3LCW 1220 W x 900 D x 73 H REAR OUTLET LHR 150 610
 SB3RCW 1220 W x 900 D x 73 H REAR OUTLET RHR 150 610
 SB6LCW 1220 W x 900 D x 73 H CENTRE OUTLET LHR 450 610
 SB6RCW 1220 W x 900 D x 73 H CENTRE OUTLET RHR 450 610
 SB33CW 900 W x 1220 D x 73 H REAR OUTLET 150 450
 SB5LCW 900 W x 1220 D x 73 H REAR OUTLET LHR 150 450
 SB5RCW 900 W x 1220 D x 73 H REAR OUTLET RHR 150 450
 SB37CW 1500 W x 900 D x 73 H REAR OUTLET 150 750

Made to Order Square White

SB36CW 1370 W x 900 D x 73 REAR OUTLET 150 685
 SB80CW 1800 W x 900 D x 73 REAR OUTLET 150 900

Made to Order Square Ivory

SB16AI 820 W x 820 D x 73 REAR OUTLET 150 410
 SB17AI 820 W x 820 D x 73 CENTRE OUTLET 410 410
 SB1LAI 820 W x 820 D x 73 REAR OUTLET LHR 150 410
 SB1RAI 820 W x 820 D x 73 REAR OUTLET RHR 150 410
 SB15AI 820 W x 820 D x 73 REAR OUTLET DBL 150 410
 SB26AI 900 W x 900 D x 73 REAR OUTLET 150 450
 SB28AI 900 W x 900 D x 73 CENTRE OUTLET 450 450
 SB2LAI 900 W x 900 D x 73 REAR OUTLET LHR 150 450
 SB2RAI 900 W x 900 D x 73 REAR OUTLET RHR 150 450
 SB19AI 900 W x 900 D x 73 REAR OUTLET DBL 150 450
 SB40AI 1000 W x 1000 D x 73 REAR OUTLET 150 500
 SB4LAI 1000 W x 1000 D x 73 REAR OUTLET LHR 150 500
 SB4RAI 1000 W x 1000 D x 73 REAR OUTLET RHR 150 500
 SB48AI 1000 W x 1000 D x 73 REAR OUTLET DBL 150 500
 SB34AI 1220 W x 900 D x 73 REAR OUTLET 150 610
 SB41AI 1220 W x 900 D x 73 CENTRE OUTLET 450 610
 SB3LAI 1220 W x 900 D x 73 REAR OUTLET LHR 150 610
 SB3RAI 1220 W x 900 D x 73 REAR OUTLET RHR 150 610



SB6LAI 1220 W x 900 D x 73 CENTRE OUTLET LHR 450 610
 SB6RAI 1220 W x 900 D x 73 CENTRE OUTLET RHR 450 610
 SB33AI 900 W x 1220 D x 73 REAR OUTLET 150 450
 SB5LAI 900 W x 1220 D x 73 REAR OUTLET LHR 150 450
 SB5RAI 900 W x 1220 D x 73 REAR OUTLET RHR 150 450
 SB36AI 1370 W x 900 D x 73 REAR OUTLET 150 685
 SB37AI 1500 W x 900 D x 73 REAR OUTLET 150 750
 SB80AI 1800 W x 900 D x 73 REAR OUTLET 150 900

By  **marbletrend**

FLINDERS SHOWER

SHOWER SCREEN

Available in a range of styles and sizes, the Finders shower screen is the most versatile screen in the Marbletrent range. The design of the semi-frameless door and semi-frameless return panel is simple, elegant and easy to clean.

FEATURES AND BENEFITS

- Screen height 2000mm
- Pivoting door
- Semi-frameless front set in 6mm glass
- Semi-frameless return panel in 6mm glass
- Toughened safety glass to Australian standards AS/NZS2208
- Fully reversible screen

APPLICATIONS

- Suits tiled floors
- Suits Kimberley, Finders, Daintree, Evo and Barossa bases
- Front panel sets can be used in an alcove

MATERIALS

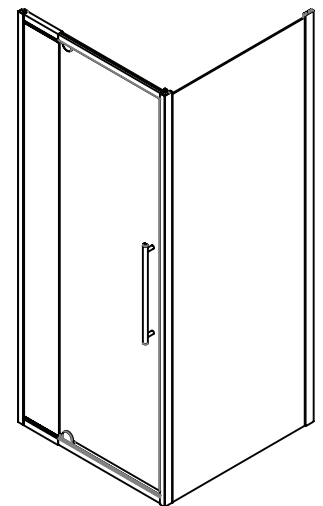
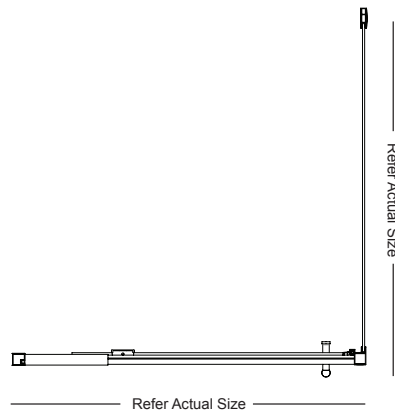
- Aluminium frame
- 6mm glass door panel
- 6mm glass return panel

PRODUCTS	Min	Max
Door Panel Set		
820 Chrome SSFL16CHCLP	750	810
820 White SSFL16WHCLP	750	810
900 Chrome SSFL26CHCLP	830	890
900 White SSFL26WHCLP	830	890
1000 Chrome SSFL40CHCLP	930	990
1000 White SSFL40WHCLP	930	990
1220 Chrome SSFL34CHCLP	1140	1200
1220 White SSFL34WHCLP	1140	1200
1500 Chrome SSFL37CHCLP	1430	1490
1500 White SSFL37WHCLP	1430	1490

Return Panel Set		
820 Chrome SSFL16CHCLR	770	805
820 White SSFL16WHCLR	770	805
900 Chrome SSFL26CHCLR	835	870
900 White SSFL26WHCLR	835	870
1000 Chrome SSFL40CHCLR	935	970
1000 White SSFL40WHCLR	935	970
1220 Chrome SSFL34CHCLR	1155	1190
1220 White SSFL34WHCLR	1155	1190



Enduro
Shield



By  marbletrent

FLINDERS POLYMARBLE CORNER SHOWER BASE

SHOWER BASE

The Flinders Polymarble™ shower base is non-self-supporting and is made from Polymarble™ - a hardwearing, solid, fully moulded material ideal for bathroom surfaces.

FEATURES AND BENEFITS

- Polymarble™
- Mortar bed required – non self-supporting
- 50mm high step
- Choose from 2 or 3 sided, 17mm tile flange
- Fully integrated waste with 50mm male thread

PRODUCTS

Standard NEO Corner White

SB39CW	914 W x 914 D x 80 H REAR OUTLET
SB69CW	914 W x 914 D x 80 H CENTRE OUTLET
SB29CW	1000 W x 1000 D x 80 H REAR OUTLET
SB79CW	1000 W x 1000 D x 80 H CENTRE OUTLET

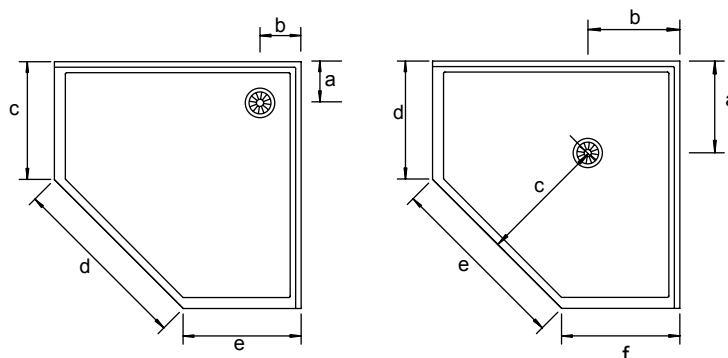
Made to Order NEO Corner White

SB59CW	1200 W x 1200 D x 80 H REAR OUTLET
--------	------------------------------------

Made to Order NEO Corner Ivory

SB39AI	914 W x 914 D x 80 H REAR OUTLET
SB69AI	914 W x 914 D x 80 H CENTRE OUTLET
SB29AI	1000 W x 1000 D x 80 H REAR OUTLET
SB79AI	1000 W x 1000 D x 80 H CENTRE OUTLET
SB59AI	1200 W x 1200 D x 80 H REAR OUTLET

By  marbletrend



FLINDERS CORNER SHOWER SCREEN

SHOWER SCREEN

Available in 27 configurations, the Flinders shower screen is the most versatile screen in the Marbletrend range. The design of the semi-frameless door and return panel is modern, elegant and easy to clean.

FEATURES AND BENEFITS

- Most versatile screen
- Self-closing door
- Large adjustment range for the perfect fit

SPECS

Height	2000mm	Glass Thickness	6mm
Colours	Chrome, White		
Material	Toughened safety glass to standards		
Base Compatibility:	Kimberley, Flinders and Johnson Suisse Evo		
Tiled Floor Suitable	Yes	Alcove Suitable	Yes

SIZES

900 W x 900 D min 835 x 835 (+60)
1000 W x 1000 D min 935 x 935 (+60)



FLINDERS SHOWER PANEL

SHOWER PANEL

The Flinders Shower Panel is fully reversible permitting left or right handed installation. It features an acrylic arm for support and 8mm toughened glass.

FEATURES AND BENEFITS

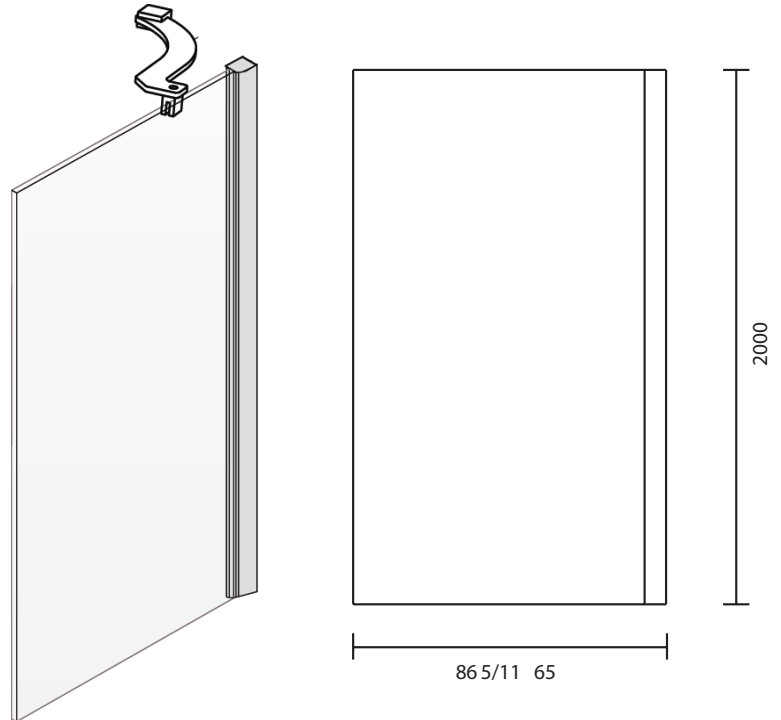
- Screen height 2000mm
- Fixed panel
- 8mm Toughened - AS/NZ2208 safety glass
- Fully reversible screen
- Suits tiled floors

SIZES

SSSP26CHCLP 865 (+25) D x 2000 H

SSSP34CHCLP 1165 (+25) D x 2000 H

By  marbletrent



STANDARD SHOWER WALL

SHOWER WALL

Marbletrent's acrylic shower walls are perfect for DIY as they are easy to install, fully reversible and feature a folded sheet, rather than a joined sheet. The walls feature Antibac® antimicrobial protection, preventing the growth of bacteria in the shower, ensuring they are effortless to keep clean.

FEATURES AND BENEFITS

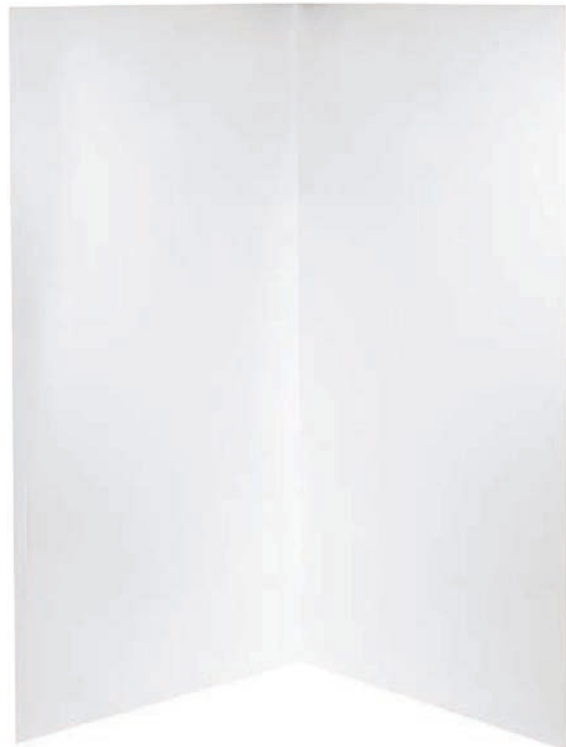
- Antibac® antimicrobial protection easy to clean
- Simple to cut, trim and add tapholes, easy installation
- Durable – scratch and crack resistant

Various shower wall sizes available.

Colours	White
Material back	Sanitary grade acrylic with ABS
Suits	All Marbletrent 2000mm screens
Includes special adhesive	

PRODUCTS

WS13WHPO	Standard 900 White 1 Sided (actual 883)
WS16WHPO	Standard 820 x 820 White 2 Sided (actual 785x785)
WS26WHPO	Standard 900 x 900 White 2 Sided (actual 883x883)
WS29WHPO	Standard 1000 x 1000 White 2 Sided (actual 983x983)
WS34WHPO	Standard 1200 x 900 White 2 Sided (actual 1195x883)
WS37WHPO	Standard 1500 x 900 White 2 Sided (actual 1483x883)



By  marbletrent

KIMBERLEY ACRYLIC SHOWER BASE

SHOWER BASE

The Kimberley Shower Base features a high gloss acrylic finish with no grout and no joins, making it easy to clean. It is self-supporting for easy installation, with built-in lips on two sides, reducing the risk of leaking.

FEATURES AND BENEFITS

- Easy to clean high gloss finish
- Self-supporting easy installation
- Low-cost solution
- Sanitary grade acrylic

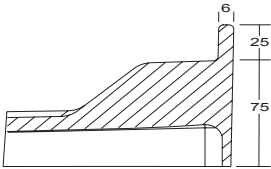
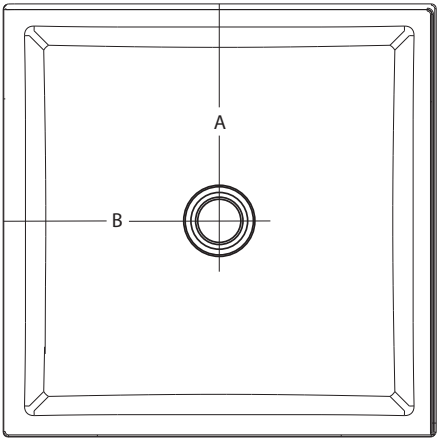
MATERIAL	Sanitary grade acrylic		
CONSTRUCTION	Self supporting		
STEP HEIGHT	70mm high step including tile lip		
TILE LIP	25mm tile lip		
ALCOVE	No	COLOUR	White
WASTE	Includes waste outlet with 50mm male thread		

PRODUCTS

Standard Square White

- SBK19CW 900 W x 900 D x 100 H Centre Outlet DBL 450 450
- SBK28CW 900 W x 900 D x 100 H Centre Outlet 450 450
- SBK40CW 1000 W x 1000 D x 100 H Centre Outlet DBL 500 500
- SBK48CW 1000 W x 1000 D x 100 H Centre Outlet 500 500
- SBK26CW 900 W x 900 D x 100 H Rear Outlet 150 450
- SBK41CW 1200 W x 900 D x 100 H Centre Outlet 450 6000

By  marbletrend



KIMBERLEY SHOWER WALL

SHOWER WALL

Marbletrend's Kimberley shower wall is easy to install, fully reversible and includes a specifically formulated adhesive. The acrylic sheet features Antibac® antimicrobial protection preventing the growth of bacteria in the shower, ensuring the Kimberley shower wall is effortless to keep clean.

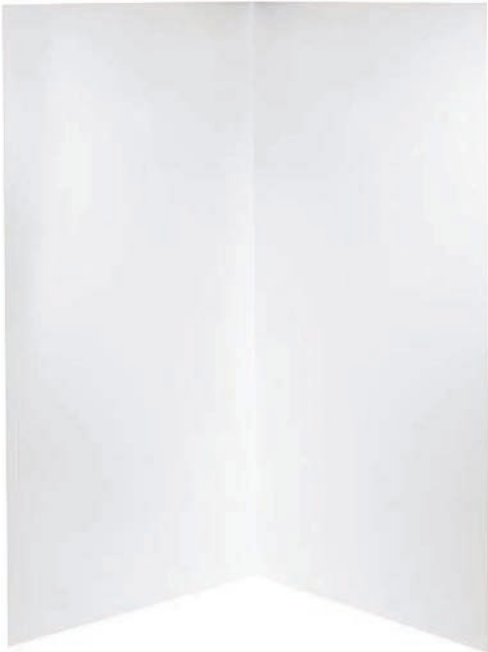
FEATURES AND BENEFITS

- Simple to cut, trim and add tapholes, easy installation
- Durable – scratch and crack resistant
- Antibac® antimicrobial protection, easy to clean

2 Sided	900 W x 900 D	Actual size: 883 x 883
	1000 W x 1000 D	Actual size: 983 x 983
Height	1830mm	Colours White
Material	Sanitary grade acrylic with ABS back	
Includes	special adhesive	

PRODUCTS

- WK26WHP 900 W x 900 D Actual size: 883 x 883
- WK29WHP 1000 W x 1000 D Actual size: 983 x 983



KIMBERLEY SHOWER SCREEN

SHOWER SCREEN

The Kimberley shower screen features a semi-frameless door for an ultra-modern look. The screen is pre-treated with Enduro-shield, reducing glass cleaning by up to 90%.

FEATURES AND BENEFITS

- Pivoting door
- Semi-frameless front set in 6mm glass
- Fully framed return panel in 5mm glass
- Ultra Clear, toughened safety glass AS/NZS2208
- Easy to clean glass, pre-treated with Enduroshield
- Fully reversible screen
- Suits Kimberley, Flinders, Daintree, Evo and Barossa bases
- Suits tiled floors

MATERIALS

- Aluminium frame
- 6mm glass door panel
- 5mm glass return panel

Front and Return Panel Set

900 Front: min 830 (+80)
Return: min 860 (+30)

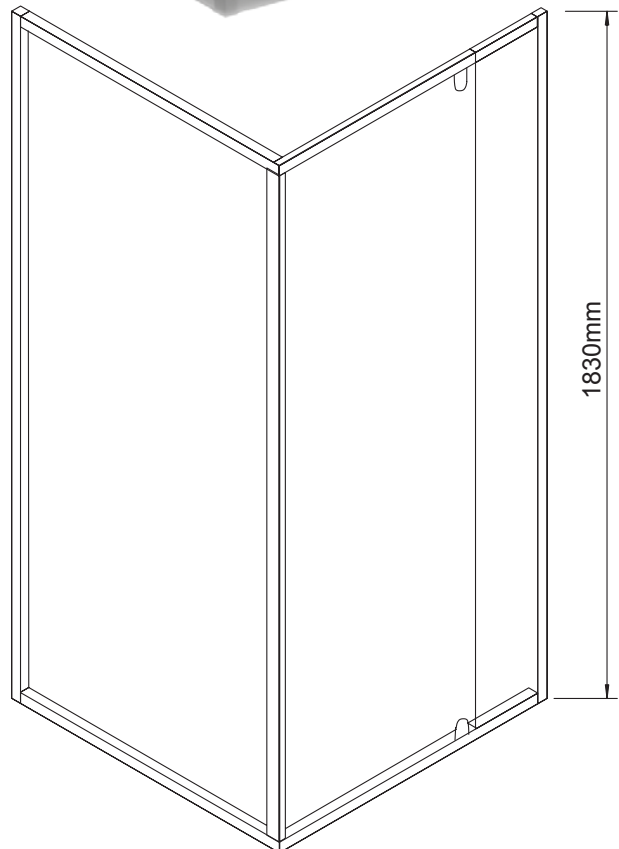
1000 Front: min 930 (+80)
Return: min 960 (+30)

PRODUCTS

Front and Return Set

900	
Chrome	SSKI26CHCLP
White	SSKI26WHCLP
1000	
Chrome	SSKI40CHCLP
White	SSKI40WHCLP

By  **marbletrend**

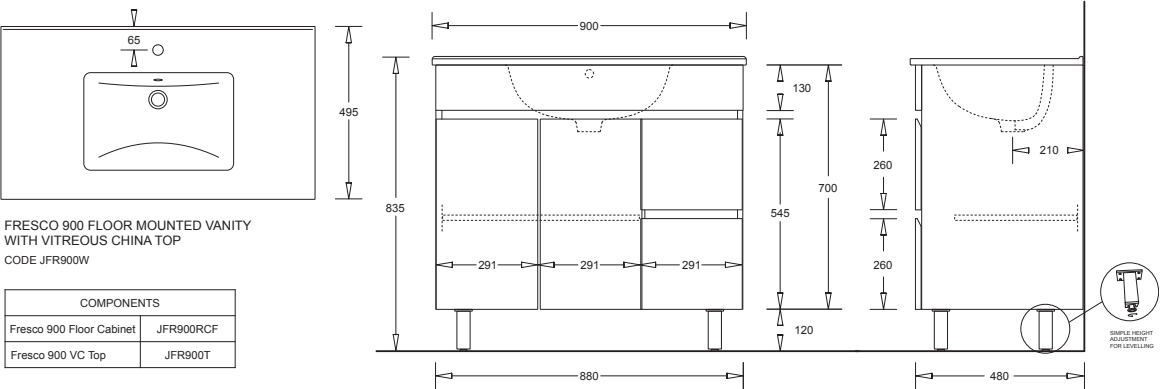


FRESCO 900 FLOOR

VANITY
JFR900F

SIZE: 900W X 490D X 835H
Adjustable floor mounting legs
Contemporary design vanity with Slimline vitreous china top (l taphole)
Strong construction in HMR MDF with durable high gloss epoxy finish
Two soft-close doors and two drawers (RHS)

By 

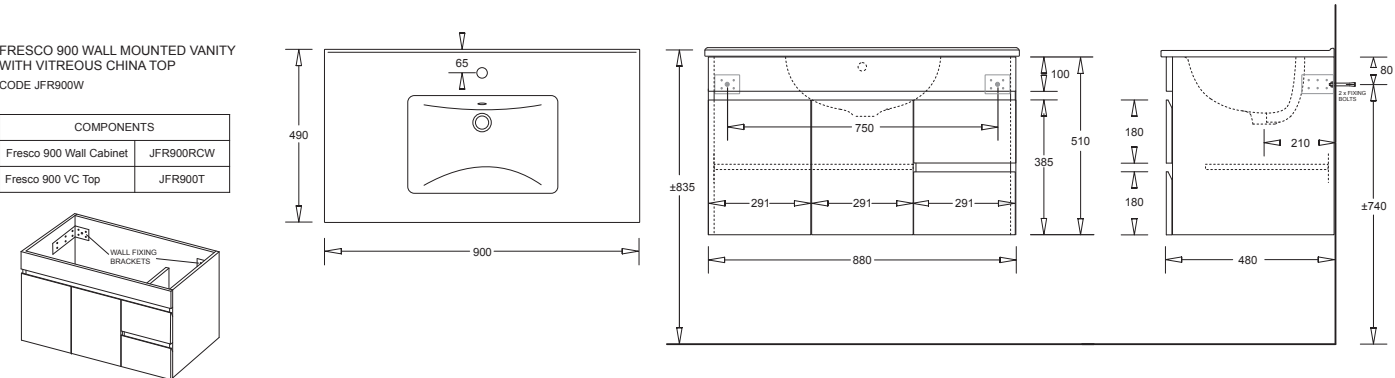


FRESCO 900 WALL

VANITY
JFR900W

SIZE: 900W X 490D X 525H
Contemporary design vanity with Slimline vitreous china top (l taphole)
Simple handle-free design of door and drawers
Strong construction in HMR MDF with durable high gloss epoxy finish
Two soft-close doors and two drawers (RHS)

By 



FRESCO 700 FLOOR

VANITY
JFR700F

SIZE: 700W X 495D X 835H

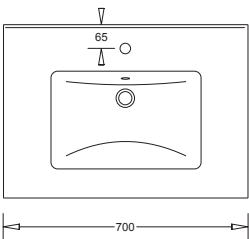
Contemporary design vanity with Slimline vitreous china top (l taphole)

Kickboard and adjustable legs provided - optional use

Soft-close doors and two drawers (RHS)

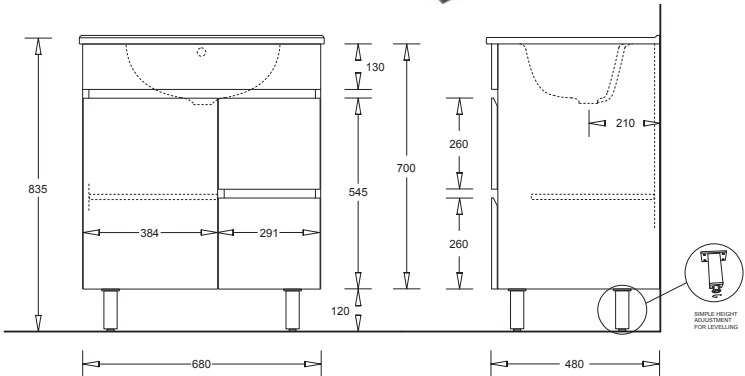
Strong construction in HMR MDF with durable high gloss epoxy finish

By  marbletrend



FRESCO 700 FLOOR MOUNTED VANITY
WITH VITREOUS CHINA TOP
CODE JFR700F

COMPONENTS	
Fresco 700 Floor Cabinet	JFR700RCF
Fresco 700 VC Top	JFR700T



FRESCO 700 WALL

VANITY
JFR700W

SIZE: 700W X 495D X 535H

Contemporary design vanity with Slimline vitreous china top (l taphole)

Simple handle-free design of door and drawers

Soft-close doors and two drawers (RHS)

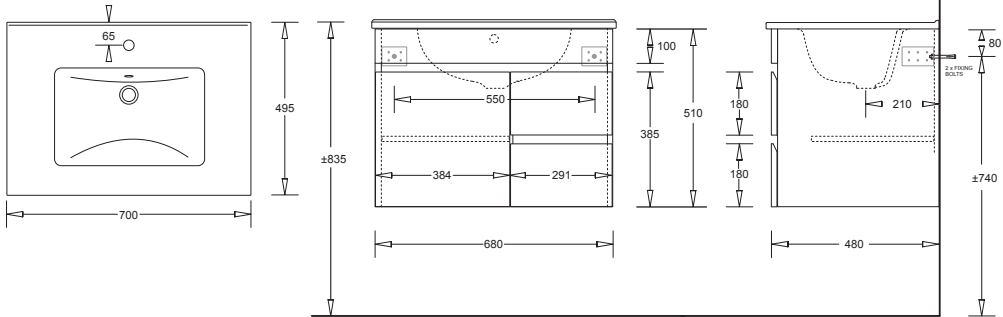
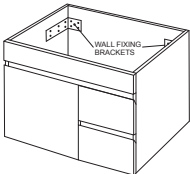
Strong construction in HMR MDF with durable high gloss epoxy finish

By  marbletrend



FRESCO 700 WALL MOUNTED VANITY
WITH VITREOUS CHINA TOP
CODE JFR700W

COMPONENTS	
Fresco 700 Wall Cabinet	JFR700RCW
Fresco 700 VC Top	JFR700T



ESTI 900

VANITY

JAG900R / JAG900L

SIZE: 900W X 460D X 850H

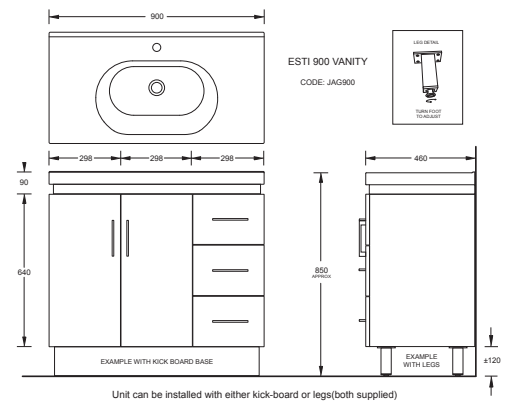
Contemporary design vanity with vitreous china top (I taphole)

Kickboard and adjustable legs provided - optional use

Strong construction in HMR MDF with durable high gloss epoxy finish

Two soft-close doors and three soft-close drawers -optional left or right mount

By 



ESTI 750

VANITY

JAG750R / JAG750L

SIZE: 750W X 460D X 850H

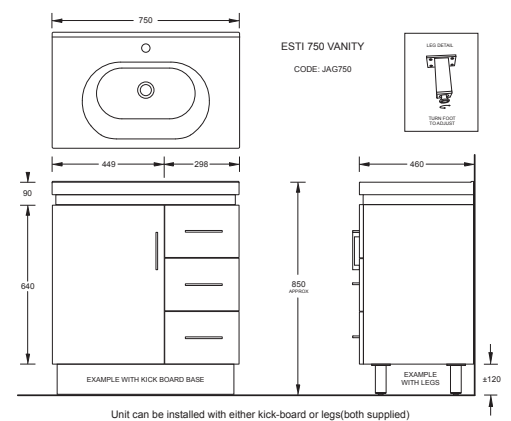
Contemporary design vanity with vitreous china top (I taphole)

Kickboard and adjustable legs provided - optional use

Soft-close door and three soft-close drawers -optional left or right mount

Strong construction in HMR MDF with durable high gloss epoxy finish

By 



ESTI SIDE CABINET

VANITY

JAG400

SIZE: 400W 400D X 1200H

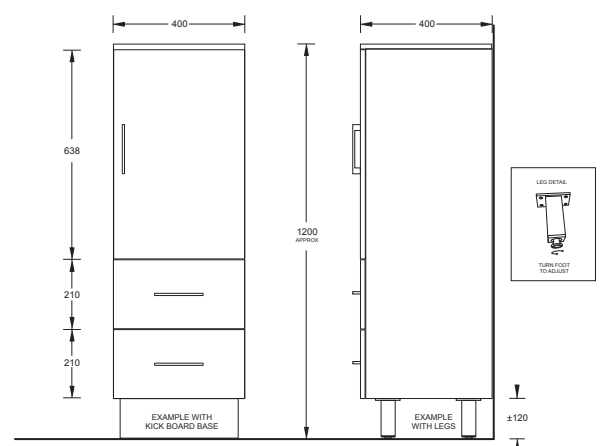
Contemporary design freestanding bathroom storage cabinet

Kickboard and adjustable legs provided - optional use

Soft-close door and two soft-close drawers

Strong construction in HMR MDF with durable high gloss epoxy finish

By 



MODE 500 ENSUITE FLOOR VANITY

VANITY
CHICO500

SIZE: 510W x 410D x 830H

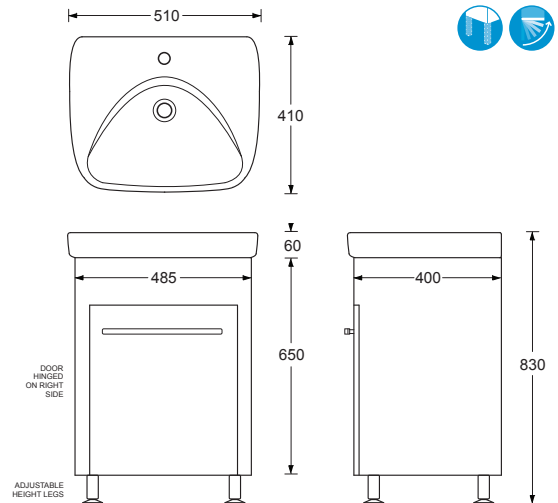
Compact vanity with integrated vitreous china top (1 taphole)

Formed waterproof polymer construction with white epoxy finish

Fixed internal shelf with cut-out for trap fitting

Adjustable legs provided for floor mounting

By  marbletrend



COTTAGE 450 ENSUITE VANITY

VANITY
CHICO450

SIZE: 450W x 350D x 850H

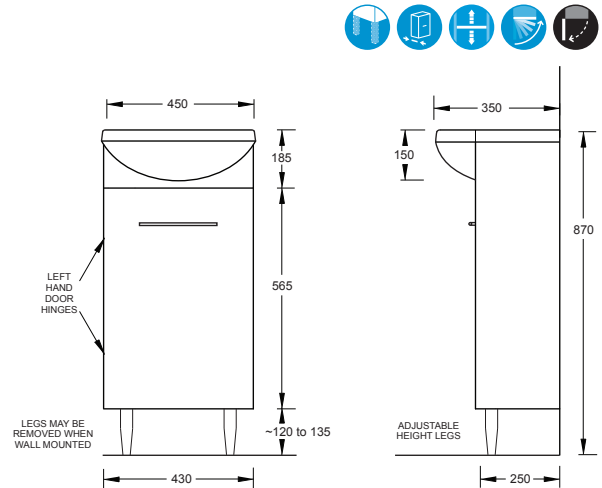
Compact ensuite vanity with integrated vitreous china top (450Wx350D 1 taphole)

Strong construction in HMR MDF with durable high gloss epoxy finish

Adjustable internal shelf

Adjustable legs provided for floor mounting - may also be wall mounted

By  marbletrend



MODE 400 ENSUITE VANITY

VANITY
CHICO400

SIZE: 410W x 290D x 850H

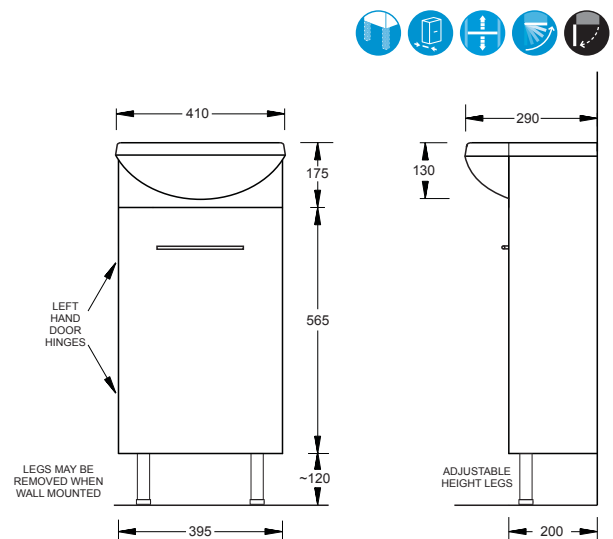
Compact ensuite vanity with integrated vitreous china top (410Wx290D 1 taphole)

Strong construction in HMR MDF with durable high gloss epoxy finish

Adjustable internal shelf

Adjustable legs provided for floor mounting - may also be wall mounted

By  marbletrend

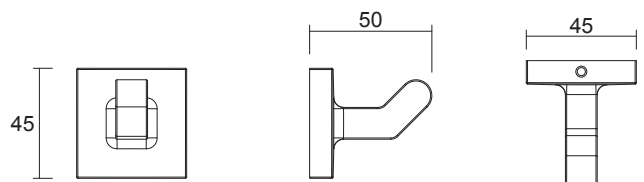


CUBE SINGLE ROBE HOOK

GDC160121

45W X 50D X 45H

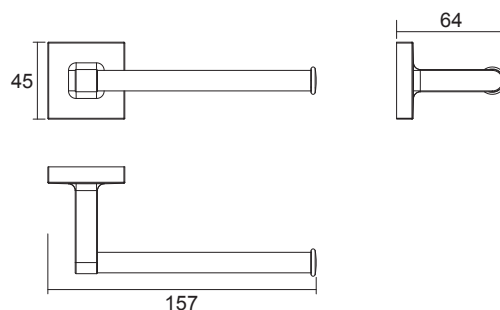
- Durable chrome trim with secure DIY fixing system



CUBE SINGLE TOILET ROLL HOLDER

GDC160156

- Durable chrome trim with secure DIY fixing system

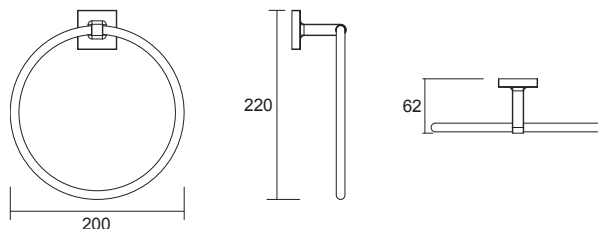


CUBE TOWEL RING

GDC160172

200W X 62D X 220H

- Durable chrome trim with secure DIY fixing system

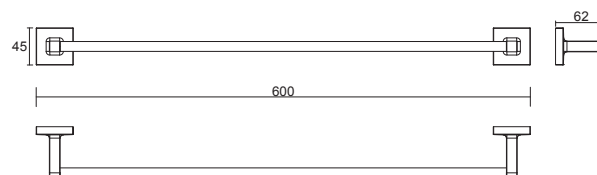


CUBE SINGLE TOWEL RAIL 600MM

GDC160165

600W X 62D X 45H

- Durable chrome trim with secure DIY fixing system

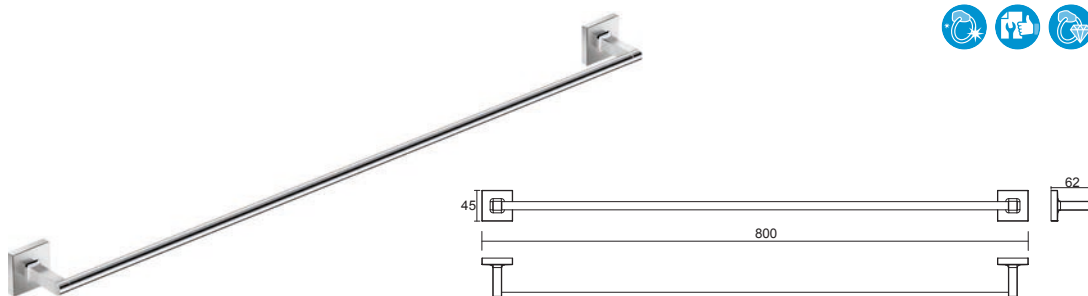


CUBE SINGLE TOWEL RAIL 800MM

GDC160166

800W X 62D X 45H

- Durable chrome trim with secure DIY fixing system



CUBE DOUBLE TOWEL RAIL 800MM

GDC160161

800W X 124D X 45H

- Durable chrome trim with secure DIY fixing system

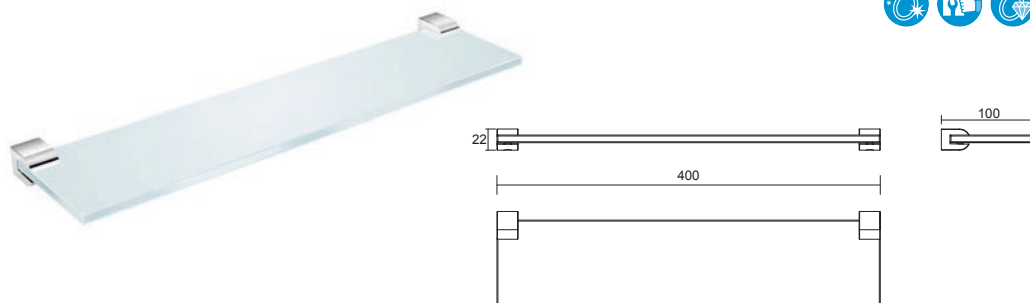


CUBE GLASS SHELF 400MM TEMPERED

GDC160144

400W X 100D X 22H

- Durable chrome trim with secure DIY fixing system

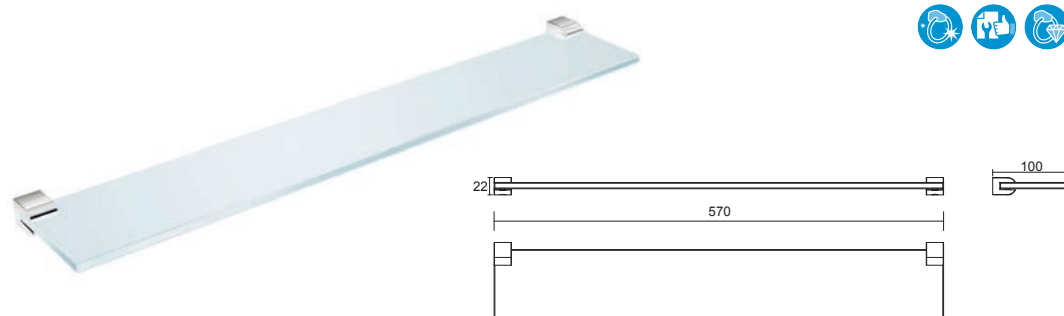


CUBE GLASS SHELF 600MM TEMPERED

GDC160145

570W X 100D X 22H

- Durable chrome trim with secure DIY fixing system

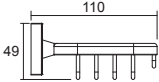
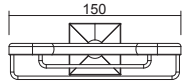
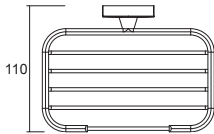


CUBE SOAP WIRE RACK

GDC160149

150W X 110D X 49H

- Durable chrome trim with secure DIY fixing system

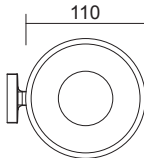
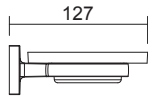
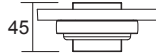


CUBE WALL SOAP DISH

GDC160132

110W X 127D X 45H

- Durable chrome trim with secure DIY fixing system

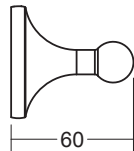


SWIFT ROBE HOOK

GDC150121

55W X 60D X 55H

- Durable chrome trim with secure DIY fixing system

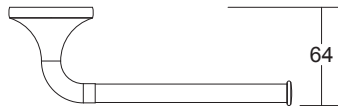
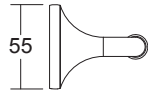
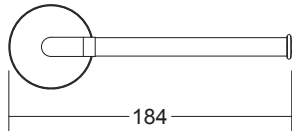


SWIFT TOILET ROLL HOLDER

GDC150156

184W X 64D X 55H

- Durable chrome trim with secure DIY fixing system

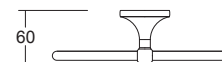
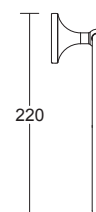
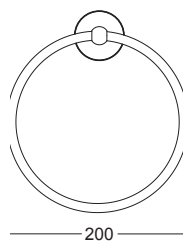


SWIFT TOWEL RING

GDC150172

200W X 60D X 220H

- Durable chrome trim with secure DIY fixing system

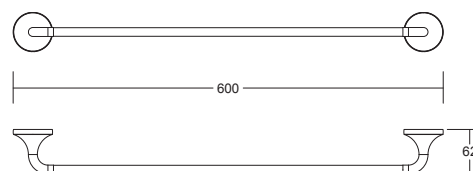


SWIFT SINGLE TOWEL RAIL 600MM

GDC150165

600W X 62D X 45H

- Durable chrome trim with secure DIY fixing system



SWIFT SINGLE TOWEL RAIL 800MM

GDC150166

800W X 62D X 45H

- Durable chrome trim with secure DIY fixing system

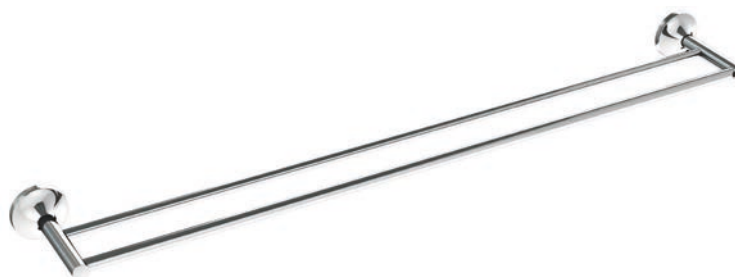


SWIFT DOUBLE TOWEL RAIL 800MM

GDC150161

800W X 124D X 45H

- Durable chrome trim with secure DIY fixing system

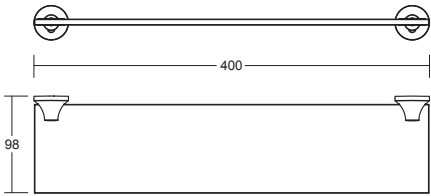


SWIFT GLASS SHELF 400MM TEMPERED

GDC150144

400W X 98D X 35H

- Durable chrome trim with secure DIY fixing system

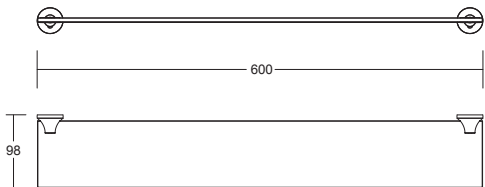


SWIFT GLASS SHELF 600MM TEMPERED

GDC150145

600W X 96D X 35H

- Durable chrome trim with secure DIY fixing system

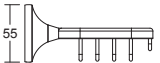
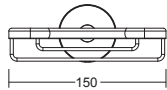
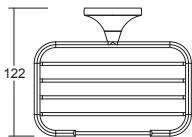


SWIFT SOAP WIRE RACK

GDC150187

150W X 122D X 55H

- Durable chrome trim with secure DIY fixing system

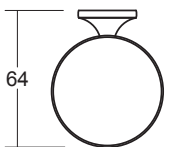
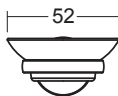


SWIFT WALL SOAP DISH

GDC10132

150W X 122D X 55H

- Durable chrome trim with secure DIY fixing system



HEATED TOWEL RAIL STRAIGHT

HTCR05-01S

600H X 550W

- Attractive 5 bar heated towel rail with optional plug-in or fixed wiring installation
- IP45 rating 65W
- Polished stainless steel tubing
- Simple concealed fixing system



HEATED TOWEL RAIL CURVED

HTCR05-01C

600H X 550W

- Attractive 5 bar heated towel rail with optional plug-in or fixed wiring installation
- Convenient curved rails
- Polished stainless steel tubing
- Simple concealed fixing system IP45 rating 65W



FLINDERS 2 TIER TIDY

TIMEDEAC

- Contemporary design - vertical fixing rail with 2 glass shelves
- Corner mounted
- Chrome plated brass fittings
- Secure Concealed DIY fixing system



FLINDERS 3 TIER TIDY

TIMEDEAC3

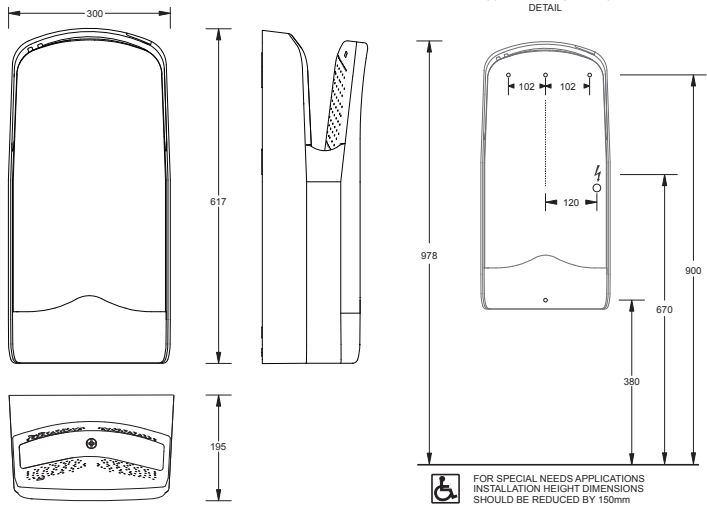
- Contemporary design - vertical fixing rail with 3 glass shelves
- Corner mounted
- Chrome plated brass fittings
- Secure Concealed DIY fixing system



NOFER V-JET HAND DRYER

APPLIANCE
NHD01303.S (Silver finish)
NHD01303.W (White finish)

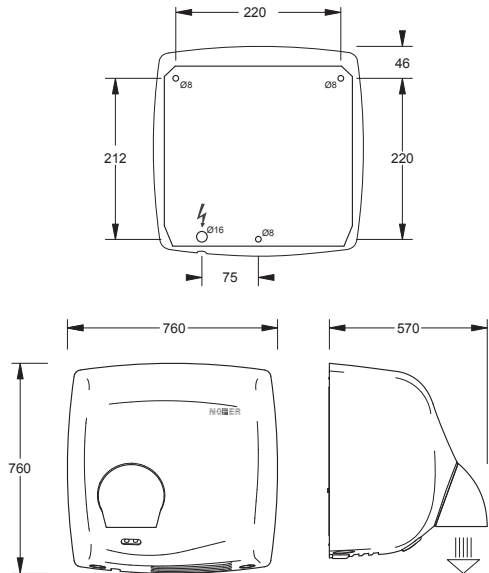
SIZE: 617 x 300 x 195
Premium, high performance hand dryer
Suitable in high traffic, continuous use areas
200km/hr airflow,
70dB noise rating
Dual high speed fans -
1760kW 8A



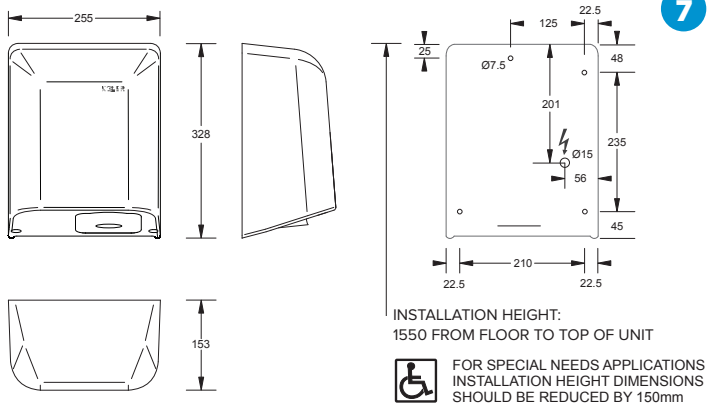
NOFER WINDFLOW HAND DRYER

APPLIANCE
NHD01151.B (Brushed Steel finish)
NHD01151.W (White finish)

SIZE: 280 x 280 x 210
Compact, efficient wall-mounted hand dryer (800W)
Auto activation by sensor
117km/hr airflow,
78dB noise rating(2m)
Sturdy, vandal resistant design



APPLIANCE
NHD01861.W
SIZE: 255 x 328 x 153
Compact, efficient wall-mounted hand dryer (800W)
Auto activation by sensor
305km/hr airflow,
72dB noise rating(2m)
Thermostatic protection with auto-reset



PRODUCT INDEX

ACCESSORIES			PAGE
Robe Hooks	Cube Robe Hook	GDC160121	68
	Swift Robe Hook	GDC150121	70
Shelves	Cube Glass Shelf 40cm Tempered	GDC160144	69
	Cube Glass Shelf 60cm Tempered	GDC160145	69
	Flinders 525 2 Tier Tidy - Chrome/Glass	TIMEDEAC	73
	Flinders 770 3 Tier Tidy - Chrome/Glass	TIMEDEAC3	73
	Swift Glass Shelf 40cm Tempered	GDC150144	72
	Swift Glass Shelf 60cm Tempered	GDC150145	72
Soap Holders	Cube Soap Wire Rack 15x11x5cm	GDC160149	70
	Cube Wall Soap Dish	GDC160132	70
	Swift Soap Wire Rack 15x11x5cm	GDC150187	72
	Swift Wall Soap Dish	GDC150132	72
Toilet Roll Holder	Cube Toilet Roll Holder Right	GDC160156	68
	Swift Toilet Roll Holder Right	GDC150156	70
Towel Racks/Rail/Rings	Cube Double Towel Rail 800mm	GDC160161	71
	Cube Single Towel Rail 60cm	GDC160165	71
	Cube Single Towel Rail 80cm	GDC160166	71
	Cube Towel Ring 20x22cm	GDC160172	68
	Curved Heated Towel Rail	HTCR05-01C	73
	Square Heated Towel Rail	HTCR05-01S	73
	Swift Double Towel Rail 800mm	GDC150161	69
	Swift Single Towel Rail 60cm	GDC150165	68
	Swift Single Towel Rail 80cm	GDC150166	69
	Swift Towel Ring 20x22cm	GDC150172	71

ASSIST & AMBULANT ACCESSORIES			PAGE
Back Rest	Assist Back Rest	BR1002	35
Grab Rails	140 degree grab rails	BR8570L / BR8570R	34
	90 degree grab rails	BR9460L / BR9460R	34
	900mm / 600mm + Rd Hand Shower + Bracket	MTMS13.14.15.90 / MTMS13.14.15.60	35
	900mm / 600mm + Sq Hand Shower + Bracket	CT301.31CP.313.90 / CT301.31CP.313.60	35
	Ambulant grab rails	BR4545	34
	Straight Grab Rails	BR1030 / BR1060 / BR1090	34
Shower Seats	960 Shower Seat	JSS001	35

BASINS			PAGE
Counter Top	Avon Vanity	J3001	16
Counter Top Drop In Sink	Large Sink	C5241	18
	Small Sink	C5201	18
Counter Top Inset Vanity	Life Vanity	J3040	16
	Milano Vanity	J3020	16
Semi-Recessed	Avon Semi Recess	J3010	16
	Basel Semi Recess	J3220	14
	Life Semi Recess	J3065	14
	Milano Semi Recess	J3030	16
	Quado Semi Recess	J3110	14
Undercounter	Quado Undercounter	J3120	18
Wall Hung	Classica Compact	J3150	14
	Cleaners Sink	G1500.PW4	18
	Como	J3180	12
	Egg Junior Basin	C01427.1	14

BASINS			PAGE
Wall Hung	Emilia 450	J3140	12
	Emilia 550	J3142	12
	Emilia 600	J3144	12
	Life Wall Basin	J3070	10
	Living Assist Basin	C0154	12
	Lucca LH / RH	J3170L / J3170R	8
	Quado 450	J3160	10
	Quado 500	J3162	10
	Quado 600	J3164	10
	Quado 800	J3166	10
BATHS			PAGE
Freestanding	Atlantica Grande	J5030.42.44	38
	Merge Mk II Freestanding Bath	M2WHWH.FR	38
	Merge Mk II Island Bath	M2WHWH.IS	38
	Palermo Freestanding Bath	D7WHWHM	36
	Tivoli Freestanding Bath	D3WHWHM / D3WHWHS	38
Inset	Esti 1700 / 1500 Steel Inset Bath	J5152	40
	Project Premium 1675 / 1500 Inset Bath	J5116 / J5115	40
	Select 1600 / 1500 Inset Bath	J5166	40
	Select 1800 Inset Bath	J5180	40
FURNITURE			PAGE
	Cottage 450 Ensuite	Chico450	67
	Esti 750	JAG750R / JAG750L	66
	Esti 900	JAG900R / JAG900L	66
	Esti Side Cabinet	JAG400	66
	Fresco 700 Floor	JFR700F	65
	Fresco 700 Wall	JFR700W	65
	Fresco 900 Floor	JFR900F	64
	Fresco 900 Wall	JFR900W	64
	Mode 400 Ensuite	Chico400	67
	Mode 500 Ensuite Floor	Chico500	67
HAND DRYERS			PAGE
	Nofer Fuga Hand Dryer	NHD01861.W	74
	Nofer V-Jet Hand Dryer	NHD01303.S / NHD01303.W	74
	Nofer Windflow Hand Dryer	NHD01151.B / NHD01151.W	74
SHOWERS			PAGE
Bases	Barossa Polymarble Base		54
	Daintree Polymarble Base		57
	Flinders Angled Corner Shower Base		60
	Flinders Polymarble Shower Base		58
	Kimberly Acrylic Base		62
	Tile Tray		54
Panels	Flinders Shower Panel		61
Screens	Barossa Pivot Frameless Screen		52
	Barossa Pivot Semi Frameless Screen		56
	Barossa Slider Screen		55
	Corsica Bi-Fold Screen		57
	Flinders Angled Corner Shower Screen		60
	Flinders Shower Screen		59
	Kimberly Shower Screen		63

SHOWERS			PAGE
Walls	Kimberly Shower Wall		62
	Standard Shower Wall		61
TAPWARE			PAGE
Basin Mixers	Life Assist Basin Mixer	JTL121	49
	Living Assist Basin Mixer	JTL122	49
	Madeira Basin Mixer	MTM121	47
	Madeira Tall Basin Mixer	MTM223	47
	Sardina Basin Mixer	MTS121	44
	Sardina Tall Basin Mixer	MTS223	44
Basin Sets	Madeira Basin 3 Piece Set	MTM313	47
	Sardina Basin 3 Piece Set	MTS313	44
Bath/Basin Mixers	Madeira Wall Mount Basin / Bath Mixer + Spout	MTM505	46
	Sardina Wall Mount Basin / Bath Mixer + Spout	MTS505	45
Bath/Shower Mixers	Madeira Concealed Diverter Mixer	MTM605	49
	Madeira Concealed Shower Mixer	MTM705	48
	Sardina Concealed Diverter Mixer	MTS605	46
	Sardina Concealed Shower Mixer	MTS705	46
Electronic Tapware	Modus E Cold Tapware	JTM121C	42
	Modus E Hot/Cold Tapware	JTM121M	42
Shower Tapware	Madeira Round Rain Shower and Arm	MTMS12	51
	Madeira/Sardina Rail Shower	MTMS13.14.15.16	50
	Square Rail Shower	CT301.31CP.393	50
	Square Rain Shower and Arm	CT353	50
Sink Mixers	Madeira Curved Gooseneck Sink Mixer 25mm	MTM403	48
	Madeira Square Gooseneck Sink Mixer 35mm	MTM423	48
	Sardina Sink Mixer Curved	MTS403	45
	Sardina Sink Mixer Square	MTS423	45
TOILET SUITES			PAGE
	Egg Junior Toilet Suite	C67977.C6262	20
Bidets	Modena Floor Mounted Bidet	J2589	30
Button Solutions	VARIOUS		22, 23
Close Coupled	Milano CC Toilet Suite	J1424 / J1425	26
	Space Solution CC Toilet Suite	C6799.C6269	26
Flush To Wall	Heart Flush to Wall Suite	J2580.J2585	24
	Life Assist FTW Toilet Suite	J2700SN.J2750SN	28
	Life Flush to Wall Suite	J2700.J2750	24
	Milano FTW Toilet Suite	J1426	26
	Tetragon FTW Suite	C67187.C6271	24
	Venezia FTW Toilet suite	J2320.J2371	24
Linked	Milano Link Toilet Suite	J1423	26
	Plaza Ambulant Link suite	J2031.J2201W	30
	Plaza Assist Link suite	J2031.J2201SN	28
	Select Ambulant Link suite	J2031.RG21016	30
	Select Assist Link Suite	J2031.RG21016SN	28
Slop Hopper	Life Slop Hopper	J2765.XC150.J2981	30
Wall Faced	Heart Econoflush Air	J2570.J2982	22
	Life Assist Econoflush Air	J2775.J2982	28
	Life Econoflush Air	J2765.J2982	22
Wall Hung	Tetragon Wall Hung Suite	C1987.J2986	22
Urinals	Life Electronic Urinal Suite	J6010.J6200	32

PRODUCT WARRANTY

Bathroom Products Australia PL is proud of the quality of the products that it offers over its’ different brands and full aftersales service is offered, should this be necessary. In Australia, consumers are protected from the consequences of faulty or defective products by the Australian Competition and Consumer Act. Products must be fit for purpose and free from material and manufacturing defects. Bathroom Products Australia offers warranty terms that extend the basic requirements and different product types have different warranty periods and conditions. This guide provides a reference as to what is covered by warranty and for how long. The

first section details the various warranty periods and the second section explains the required conditions. This guide is for products used in domestic residential building, for commercial warranty terms contact your sales representative.

Explanation of terms:

- ‘Product Replacement’ refers to the warranty period during which Bathroom Products Australia will supply an equivalent replacement product.
- ‘Parts and labour’ refers to the cost of removal and re-installation of a replacement product

SHOWERS



Polymarble Shower Base	15 years product replacement 1 year parts and labour
Shower Screens	2 years product replacement 1 year parts and labour



Polymarble Shower Base	12 years product replacement 1 year parts and labour
Acrylic Shower Base	10 years product replacement 1 year parts and labour
SMC Shower Base	3 years product replacement 1 year parts and labour
Tile Trays	15 years product replacement 1 year parts and labour
Shower Screens	1 years product replacement 1 year parts and labour
Shower Walls	3 years product/parts replacement

BATHS



Acrylic Baths	7 years product replacement 1 year parts and labour
Steel Baths	10 years product replacement 1 year parts and labour
Components	1 year product replacement



Acrylic Baths	5 years product replacement 1 year labour
Steel Baths	5 years product replacement 1 year parts and labour
Components	1 year product replacement

SANITARYWARE



Toilet Suites (all vitreous china cisterns and pans)	10 years product replacement 1 year parts and labour
Toilet Seats	1 year product/parts replacement
Vitreous China Basins	10 years product replacement 1 year parts and labour
Wall Mounted Plastic Cisterns	5 years product/parts replacement 1 year parts and labour
Inlet and Outlet Valves	3 years product replacement
Components	1 year product/parts and labour



Toilet Suites (all vitreous china cisterns and pans)	5 years product replacement 1 year parts and labour
Plastic Cisterns	3 years product replacement 1 year parts and labour
Toilet Seats	1 year product/parts replacement
Inlet and Outlet Valves	3 years product replacement
Vitreous China Basins	5 years product replacement 1 year parts and labour
Components	1 year product/parts and labour

TAPWARE & ACCESSORIES



Tapware	10 years ceramic disc cartridge 7 years product replacement 1 year labour
Accessories	10 years product replacement



Tapware	7 years ceramic disc cartridge 5 years product replacement 1 year labour
Accessories	5 years product replacement

VANITY CABINETS

JohnsonSuisse
Bathroom Solutions

Vitreous China	10 years product replacement 1 year labour
Cabinet	3 years product replacement 1 year labour
Components	1 year product replacement



Vitreous China	5 years product replacement 1 year labour
Cabinet	2 years product replacement 1 year labour
Components	1 year product replacement

Product Warranty

The benefits given by the warranty set out in this document are in addition to any other rights and remedies you may have under a law in relation to the goods to which the warranty relates. Our goods come with guarantees that cannot be excluded under Australian Consumer Law. You are entitled to a replacement or refund for a major failure and compensation for any other reasonably foreseeable loss or damage. You are also entitled to have the goods repaired or replaced if the goods fail to be of acceptable quality and the failure does not amount to a major failure. The periods of warranty and terms of cover (i.e. product replacement or parts and labour only) are detailed below. Warranty applies from date of purchase, not from date of installation.

Warranty Claims

To make a claim under this warranty you must contact either the Merchant from which the goods were purchased or Bathroom Products Australia directly by telephone, fax or email as set out above, with details of the product fault. You will need to produce proof of purchase of the goods including the date of purchase. Bathroom Products Australia will then contact you within 7 days of first being advised of the claim by you or by the merchant (as the case may be) and depending on the circumstances arrange to either (a) replace the goods (b) repair the goods (c) replace and install new goods (d) request more information (e) reject the claim. Where the goods claimed have not been installed, you must return the goods at your expense to either their point of purchase, or your nearest Bathroom Products Australia distribution centre for evaluation. If the claim is then accepted, Bathroom Products Australia will refund the freight cost to you when you give Bathroom Products Australia proof of payment of the freight cost and the amount paid.

Water Damage

Some claims may include a claim for rectification of water damage to surrounding areas as a result of leaking from a product. Such claims will require a site-call by a Bathroom Products Australia's representative who will evaluate the claim. A further inspection by an insurance representative may also be required before a claim can be determined.

Site Calls

Where Bathroom Products Australia has arranged a site-call, and a claim is rejected following inspection (often in the case of unlicensed or incorrect installation), the consumer will be charged a call-out fee of \$95, payable to Bathroom Products Australia.

Warranty Conditions

Bathroom Products Australia will not accept claims against this warranty where the following conditions are found to exist:

- Plumbing installations have not been carried out by a licensed plumber.
- Installations that are not in compliance with the Australian Plumbing Code (AS3500) and ABCB Guidelines.
- The goods have been installed by a licensed plumber but not correctly installed.
- The goods have been installed correctly by a licensed plumber, but subsequent repairs, modifications and/or adjustments to the goods after installation have not been carried out by a licensed plumber.
- Claims against faulty cistern valves and seals will be rejected where after-market sanitising additives have been introduced into the cistern tank rather than the toilet bowl.
- Claims for visual defects to product surfaces may be rejected where harsh cleaning or scouring products have been used (rather than mild household detergent and soft, non-abrasive cloths).
- Claims against vitreous china product faulty dimensions or glazing imperfections that are permitted under AS1976 - Vitreous China used in Sanitary Applications. It is permitted that vitreous china products will vary up to $\pm 3\text{mm}$ on any surface and be acceptable due to the unique conditions of the product's manufacturing process.
- Claims where proof of purchase is not provided.

Warranty Limitations

To the extent permitted under Australian Consumer Law, BPA's responsibility is limited in the following circumstances:

- Bathroom Products Australia is not responsible for any lack of operation or performance of goods (or loss or damage) where the goods have been subject to misuse, negligence, accident
- Bathroom Products Australia is not responsible where goods are used or adapted for a purpose for which they were not designed.
- Bathroom Products Australia is not responsible for any lack of operation or performance of goods (or loss or damage) where the goods are combined or integrated with other goods not supplied by Bathroom Products Australia.
- It is the responsibility of the installer before installation to ensure the goods are correct and free from obvious visible faults.
- Bathroom Products Australia is not responsible for labour and rectification costs incurred in the above circumstances.

Except as expressly stated, and to the extent permitted by law, this warranty does not include any right to be reimbursed or compensated for physical or financial injury, loss, damage, expense, time or inconvenience (whether direct or indirect) or special or consequential losses arising out of the occurrence of a defect in the parts or products or caused by use or installation of the products or damages cause by acts of nature.

Product Warranty is provided by:

Bathroom Products Australia Pty Ltd (BPA)

(ABN: 87 079 297 617)

PO Box 728 Botany, Sydney. NSW. Australia. 1455.

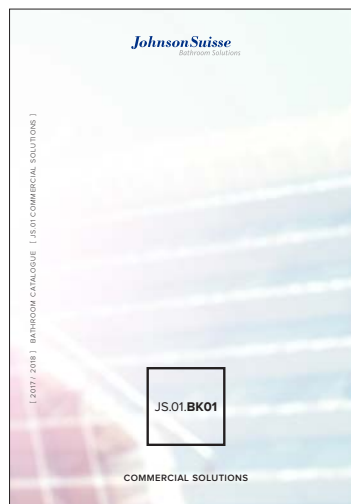
T 1300 717 717 | F 1300 746 480

bpa.warranty@johnsonsuiss.com.au

HAVE YOU SEEN OUR OTHER BROCHURES?



Bathroom Hygiene



Commercial Solutions



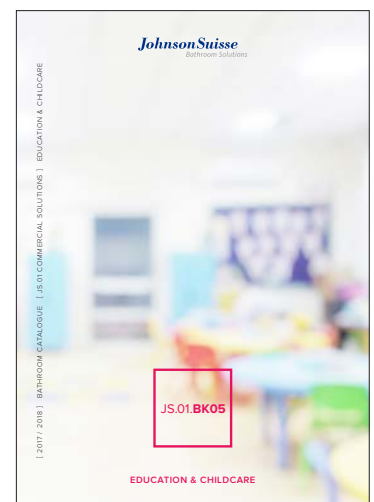
Residential Solutions



**Health, Aged Care &
Accessible Solutions**



**Corporate & Public
Spaces Solutions**



**Education & Childcare
Solutions**

www.johnsonsuiss.com.au

Take advantage of our online product catalogue to find out about our product ranges, materials, sizes and finishes that enable you to plan and transform your bathroom space. Available 24 hours a day, 365 days a year.

Contact us today!

Dedicated sales and technical helpline: 1300 717 717

Email: bpa.commercial@johnsonsuiss.com.au

JOHNSON SUISSE SHOWROOM

The Johnson Suisse showroom is a unique destination, with a huge range of products on display including some of the latest innovations in bathroomware. Whether it's for a residential or commercial project, our experienced consultants will be able to assist you in selecting what's right for you, as well as offer guidance on installation and maintenance. Come visit us or make an appointment today. The showroom is located in Scoresby, Victoria with new locations opening in 2017.



JohnsonSuisse

Bathroom Solutions

2/97 Banksia Street, Botany NSW 2019 | T 1300 717 717 | F 1300 746 480

bpa.commercial@johnsonsuiss.com.au | www.johnsonsuiss.com.au/commercial

Bathroom Products Australia Pty Ltd ABN 87 079 297 617

SHOWROOM: 31 Koornang Road, Scoresby VIC 3179 Australia | T 1300 717 717 | F 1300 746 480

All sales and product enquiries to the National Call Centre on 1300 717 717

Material and design specifications subject to change without notice.

Product colour reproduction is as near to actual product colour as production methods allow.

This brochure relates to Australian products only and some product, design or specifications may differ in other countries.